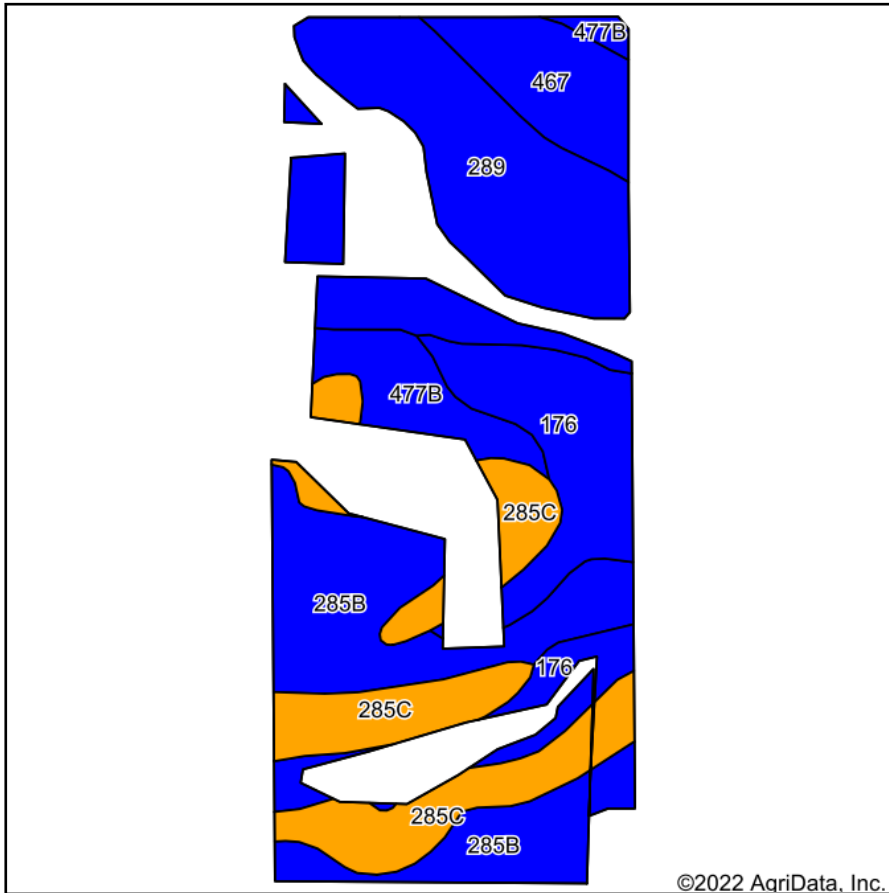
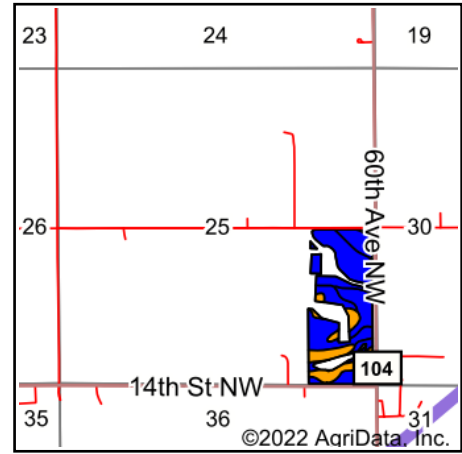


Soils Map



Soils data provided by USDA and NRCS.



State: **Minnesota**
 County: **Olmsted**
 Location: **25-107N-15W**
 Township: **Kalmar**
 Acres: **47.48**
 Date: **12/20/2022**



WHITETAIL PROPERTIES REAL ESTATE
 HUNTING | RANCH | FARM | TIMBER

Maps Provided By:



© AgriData, Inc. 2021

www.AgriDataInc.com



Area Symbol: MN109, Soil Area Version: 17

Code	Soil Description	Acres	Percent of field	Non-Irr Class Legend	Soil Drainage	Non-Irr Class *c	Productivity Index	*n NCCPI Overall	*n NCCPI Corn	*n NCCPI Small Grains	*n NCCPI Soybeans
289	Radford silt loam	13.03	27.4%		Somewhat poorly drained	IIw	95	77	69	54	77
285B	Port Byron silt loam, 2 to 6 percent slopes	11.11	23.4%		Well drained	Ile	98	88	87	78	88
285C	Port Byron silt loam, 6 to 12 percent slopes, moderately eroded	9.07	19.1%		Well drained	IIIe	91	82	82	72	78
176	Garwin silty clay loam	7.54	15.9%		Poorly drained	IIw	86	72	29	34	72
467	Sawmill silty clay loam	3.60	7.6%		Poorly drained	IIw	79	79	30	23	79
477B	Littleton silt loam, 1 to 4 percent slopes	3.13	6.6%		Somewhat poorly drained	Ile	99	83	75	60	83
Weighted Average						2.19	92.6	*n 80.3	*n 66.8	*n 57.9	*n 79.5

*n: The aggregation method is "Weighted Average using all components"

*c: Using Capabilities Class Dominant Condition Aggregation Method

Soils data provided by USDA and NRCS.