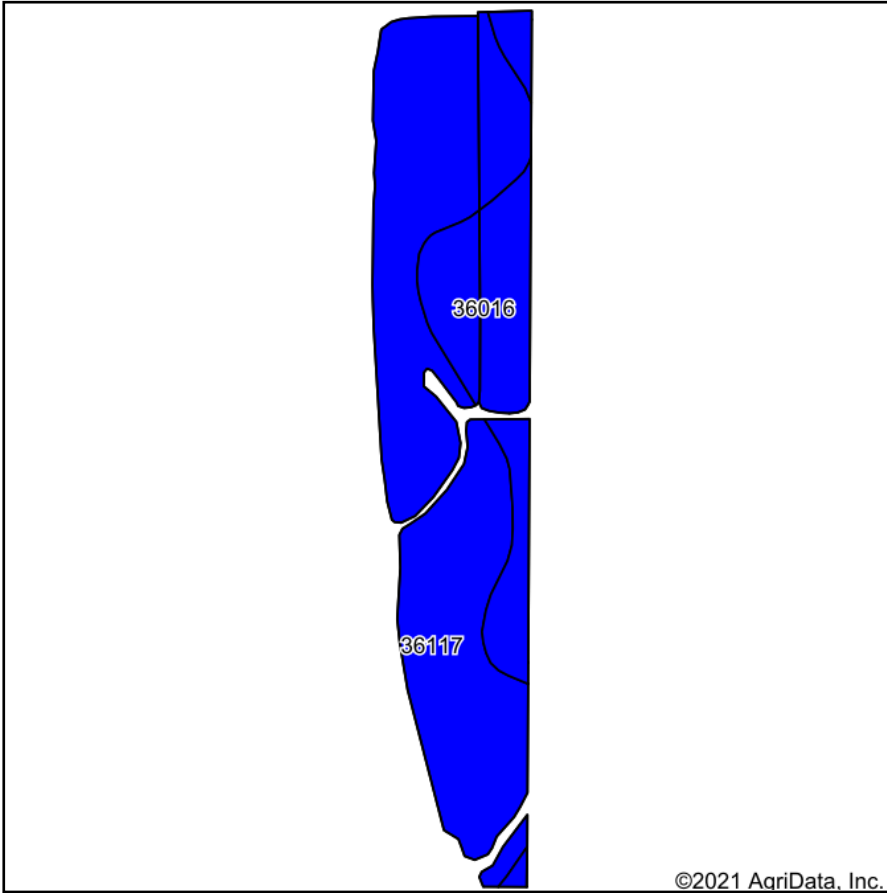
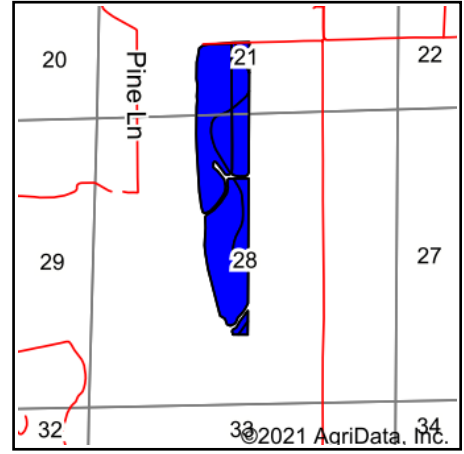


Soils Map



Soils data provided by USDA and NRCS.

©2021 AgriData, Inc.



State: **Missouri**
 County: **Grundy**
 Location: **28-60N-24W**
 Township: **Jackson**
 Acres: **95.54**
 Date: **10/4/2021**



WHITETAIL PROPERTIES REAL ESTATE
 HUNTING | RANCH | FARM | TIMBER

Maps Provided By:



© AgriData, Inc. 2021

www.AgriDataInc.com

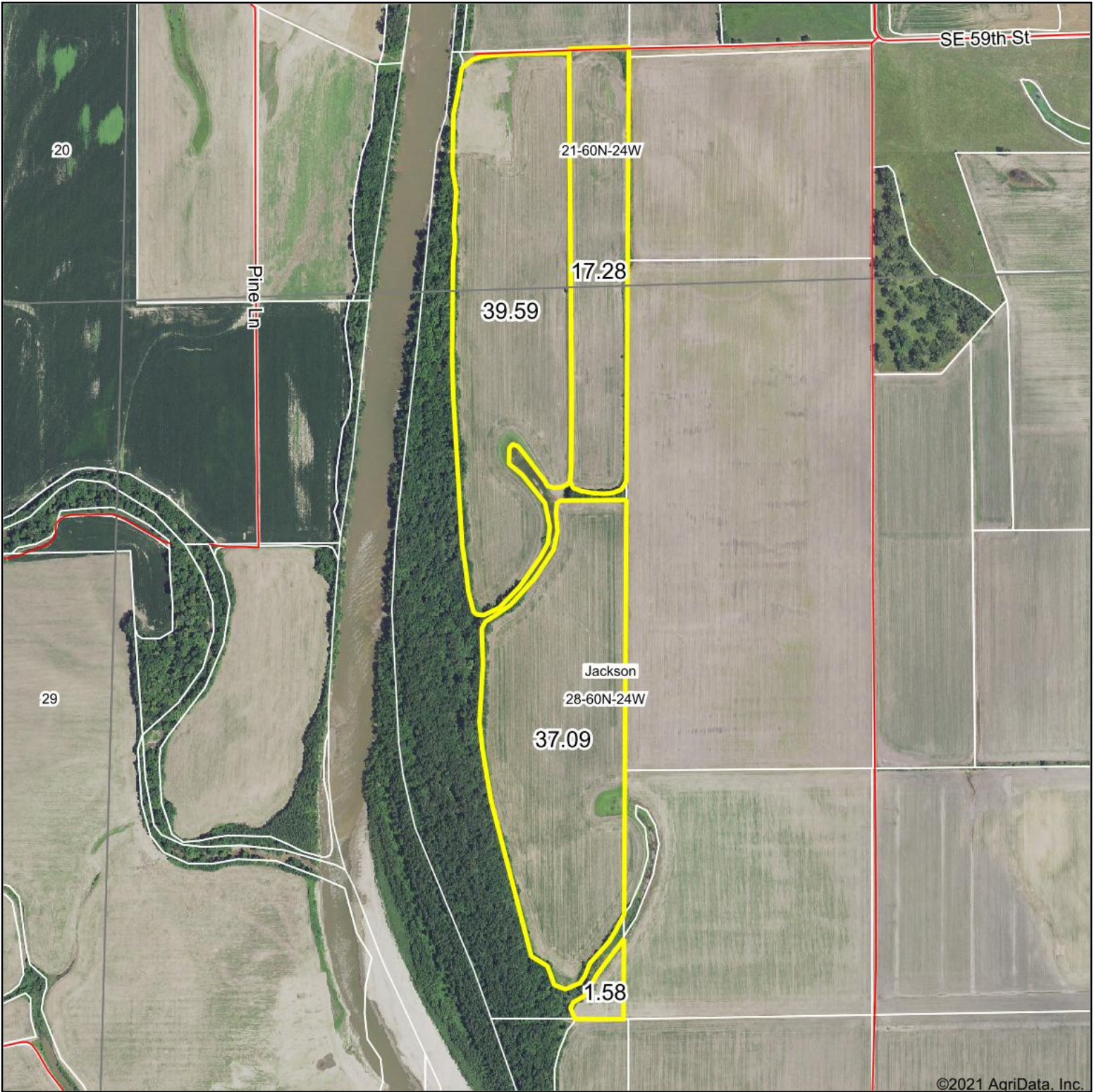


Area Symbol: MO079, Soil Area Version: 24

Code	Soil Description	Acres	Percent of field	NCCPI Overall Legend	*n NCCPI Overall	*n NCCPI Corn	*n NCCPI Soybeans
36117	Nodaway silt loam, heavy till, 0 to 2 percent slopes, occasionally flooded	70.61	73.9%		84	84	81
36016	Humeston silt loam, 0 to 2 percent slopes, occasionally flooded	24.93	26.1%		89	89	78
Weighted Average					*n 85.3	*n 85.3	*n 80.2

*n: The aggregation method is "Weighted Average using all components"
 Soils data provided by USDA and NRCS.

Aerial Map



Map Center: 39° 59.3042', -93° 36.5738'



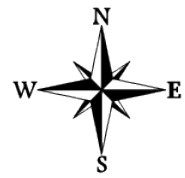
WHITETAIL PROPERTIES REAL ESTATE
HUNTING | RANCH | FARM | TIMBER

Maps Provided By:



© AgriData, Inc. 2021 www.AgriDataInc.com

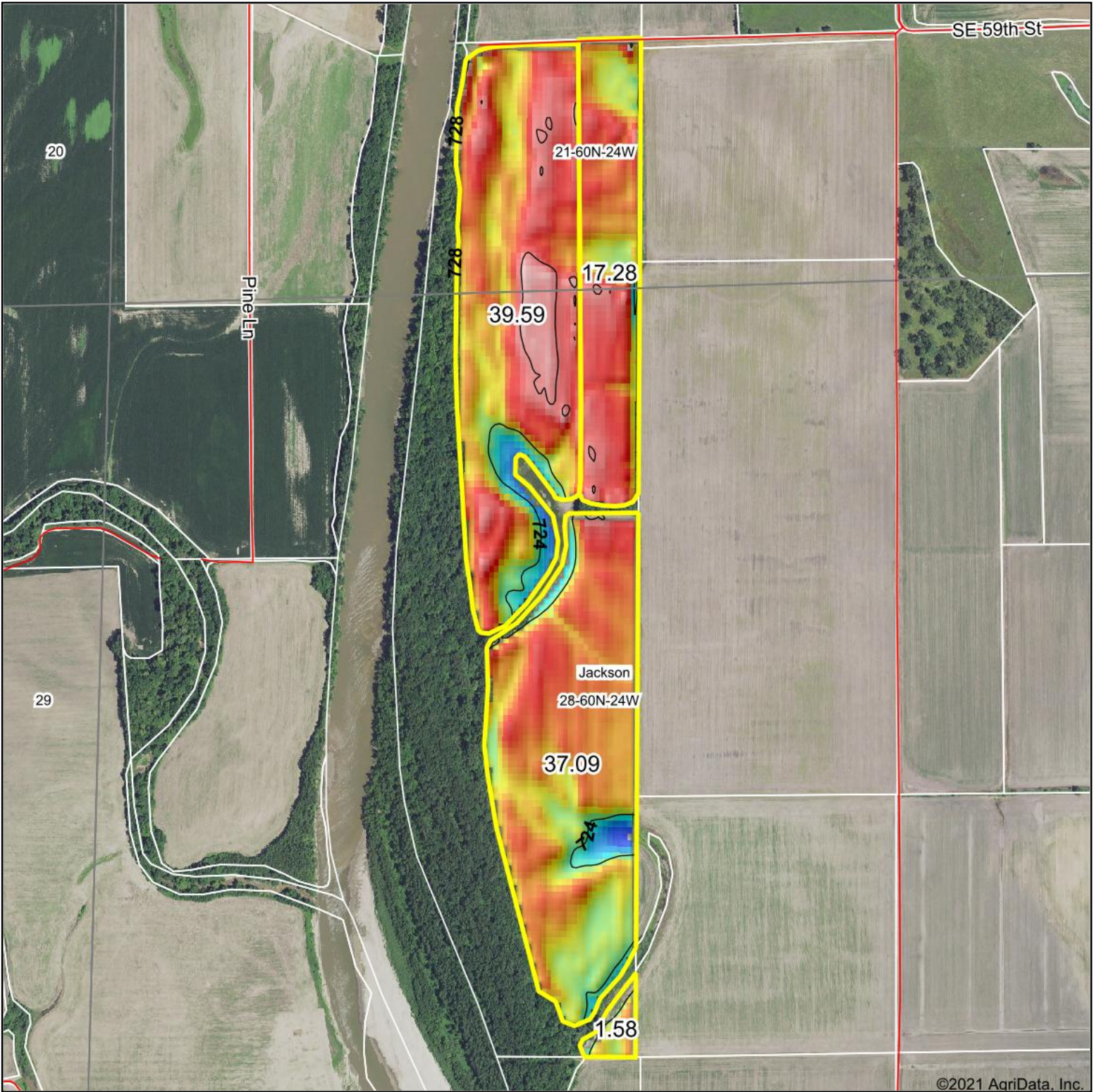
28-60N-24W
Grundy County
Missouri



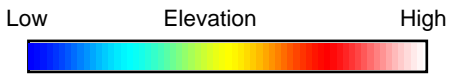
10/4/2021

Field borders provided by Farm Service Agency as of 5/21/2008.

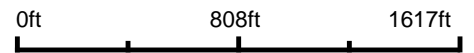
Topography Hillshade



©2021 AgriData, Inc.



Source: USGS 10 meter dem
 Interval(ft): 4
 Min: 721.4
 Max: 729.1
 Range: 7.7
 Average: 726.2
 Standard Deviation: 1.21 ft



28-60N-24W
Grundy County
Missouri

map center: 39° 59.3042', -93° 36.5738'

WHITETAIL PROPERTIES REAL ESTATE
 HUNTING | RANCH | FARM | TIMBER
 Maps Provided By:



© AgriData, Inc. 2021 www.AgriDataInc.com

Field borders provided by Farm Service Agency as of 5/21/2008.