

FSA INFO PACKET

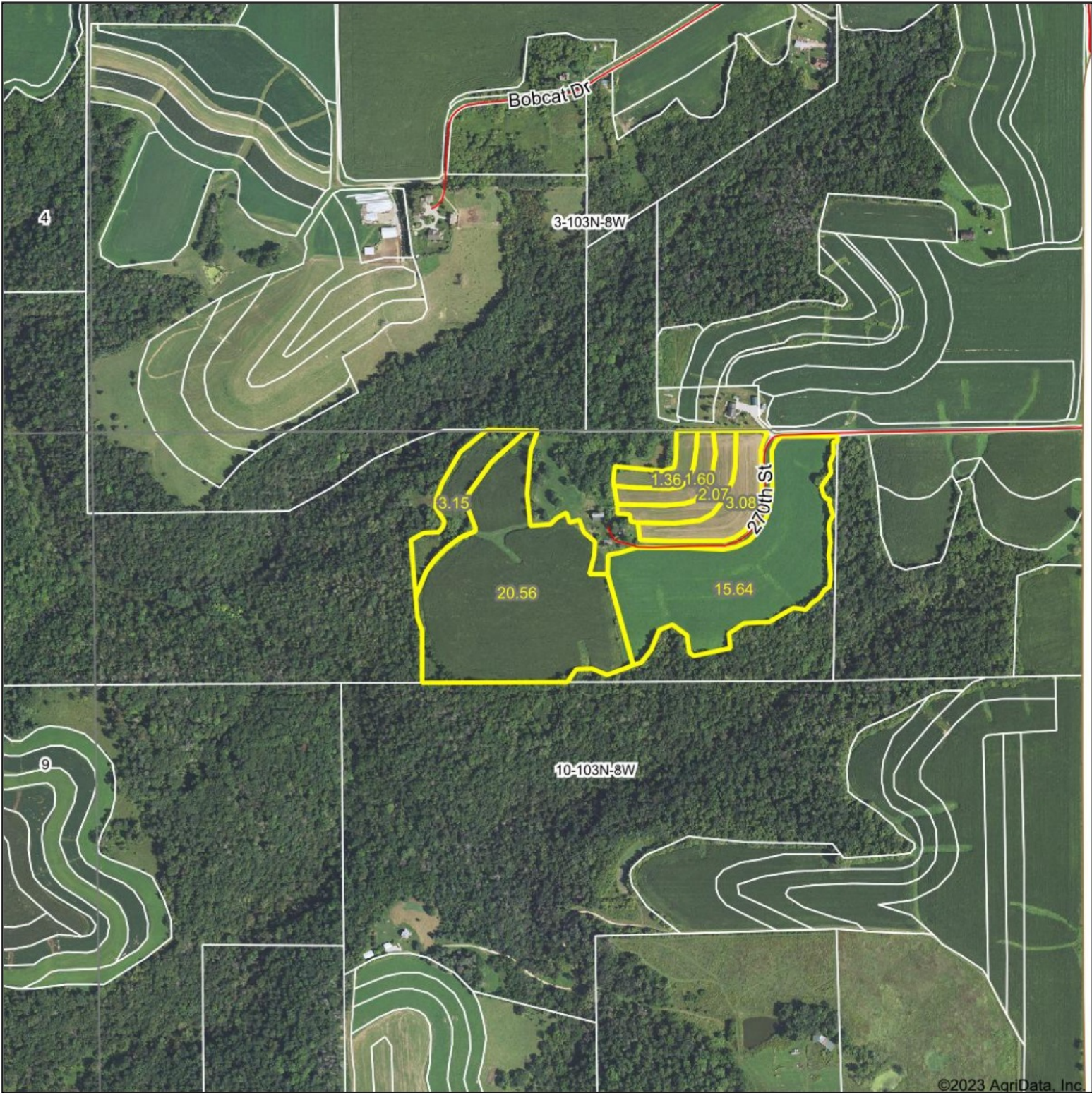


A DIVISION OF WHITETAIL
PROPERTIES REAL ESTATE, LLC

RANCHANDFARMAUCTIONS.COM

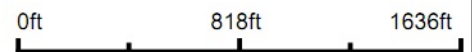
Aerial Map

ALL TRACTS



©2023 AgriData, Inc.

Boundary Center: 43.743972, -91.779623



WHITETAIL PROPERTIES REAL ESTATE
HUNTING | RANCH | FARM | TIMBER

Maps Provided By:



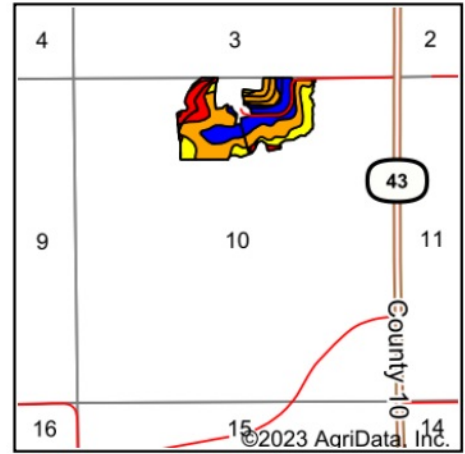
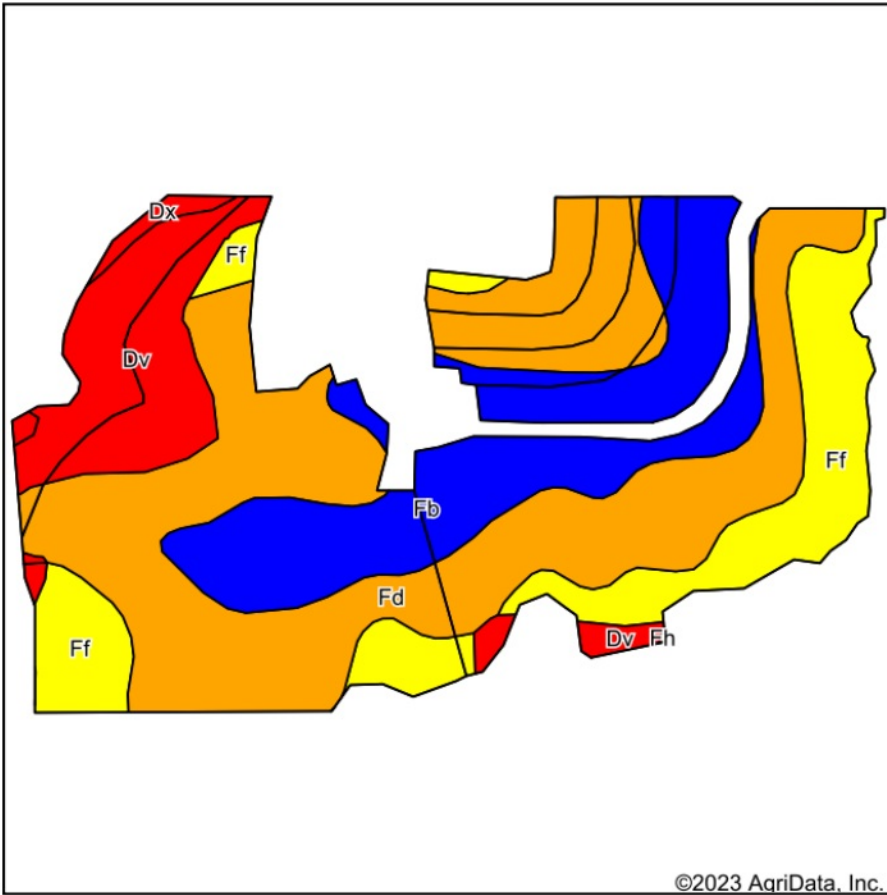
© AgriData, Inc. 2023 www.AgriDataInc.com

10-103N-8W
Fillmore County
Minnesota

12/10/2023

Field borders provided by Farm Service Agency as of 5/21/2008.

Soils Map



State: **Minnesota**
 County: **Fillmore**
 Location: **10-103N-8W**
 Township: **Norway**
 Acres: **47.46**
 Date: **12/10/2023**



WHITETAIL PROPERTIES REAL ESTATE
 HUNTING | RANCH | FARM | TIMBER

Maps Provided By:



© AgriData, Inc. 2023

www.AgriDataInc.com



Soils data provided by USDA and NRCS.

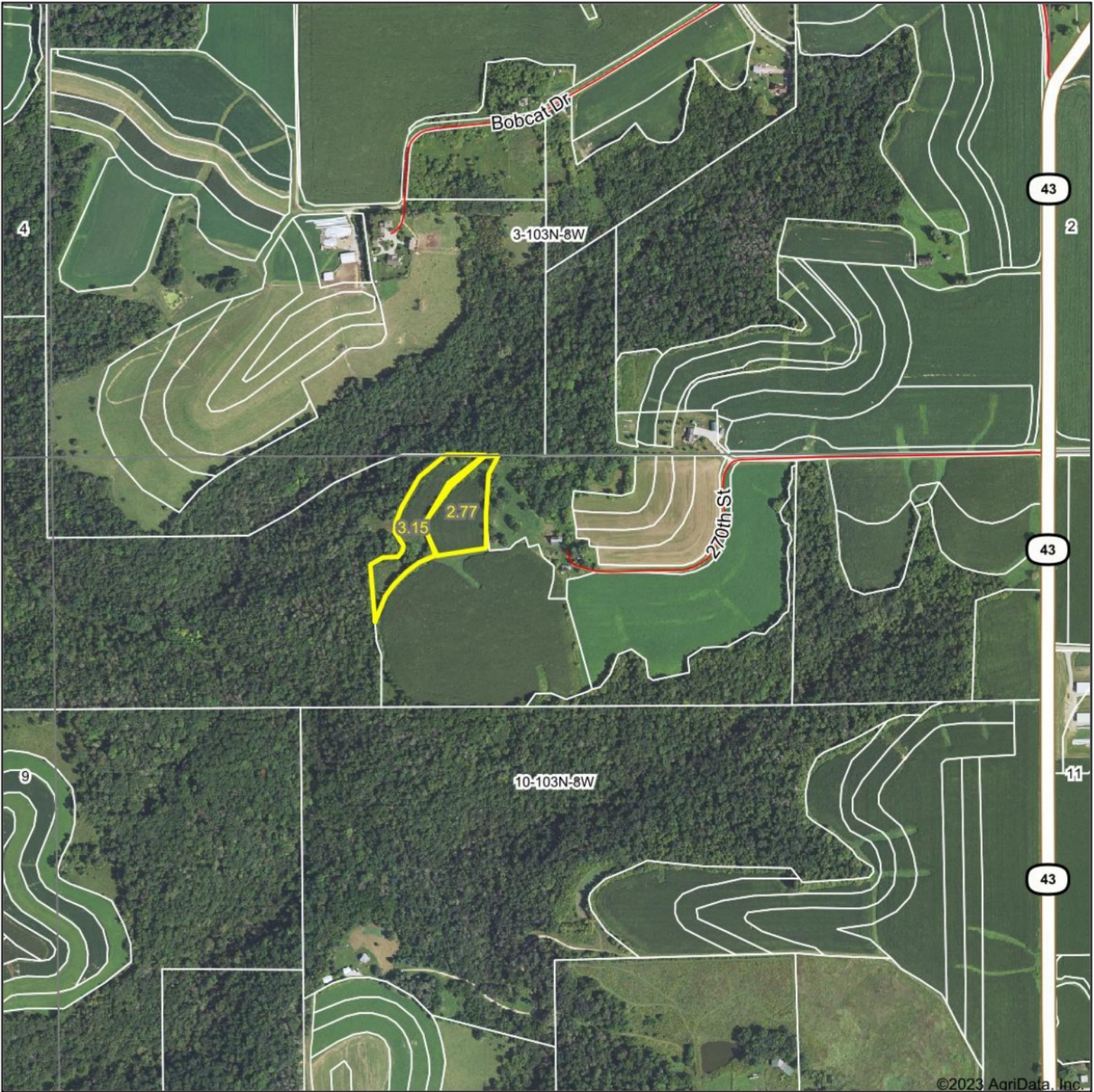
©2023 AgriData, Inc.

Area Symbol: MN045, Soil Area Version: 19

Code	Soil Description	Acres	Percent of field	PI Legend	Non-Irr Class *c	Productivity Index
Fd	Fayette silt loam, 6 to 12 percent slopes, moderately eroded	21.63	45.6%		IIIe	72
Fb	Fayette silt loam, 2 to 6 percent slopes	10.77	22.7%		IIe	85
Ff	Fayette silt loam, 12 to 20 percent slopes, moderately eroded	8.65	18.2%		IVe	61
Dv	Dubuque and Whalan silt loams, 12 to 17 percent slopes, moderately eroded	5.86	12.3%		VIe	32
Dx	Dubuque and Whalan silt loams, 18 to 45 percent slopes	0.55	1.2%		VIIe	17
Weighted Average					3.37	67.4

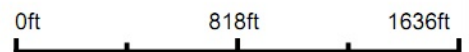
*c: Using Capabilities Class Dominant Condition Aggregation Method

Aerial Map TRACT 1



©2023 AgriData, Inc.

Boundary Center: 43.744600, -91.782586



WHITETAIL PROPERTIES REAL ESTATE
HUNTING | RANCH | FARM | TIMBER

Maps Provided By:



© AgriData, Inc. 2023 www.AgriDataInc.com

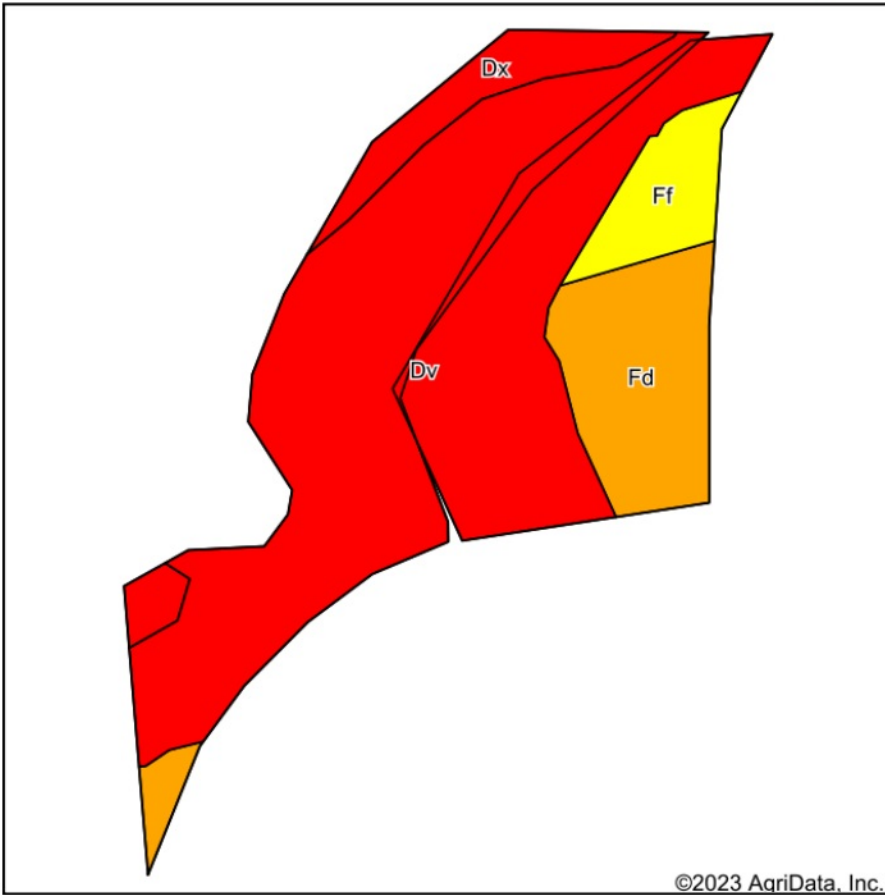
10-103N-8W
Fillmore County
Minnesota



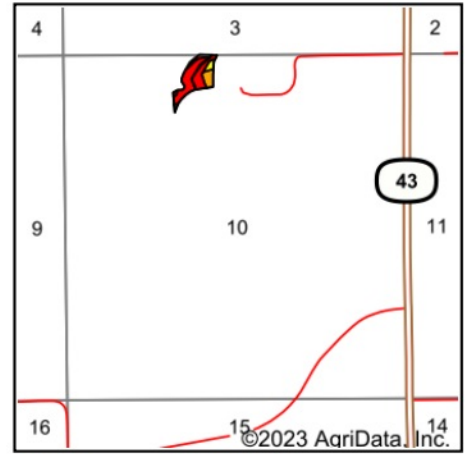
12/10/2023

Field borders provided by Farm Service Agency as of 5/21/2008.

Soils Map



Soils data provided by USDA and NRCS.



State: **Minnesota**
 County: **Fillmore**
 Location: **10-103N-8W**
 Township: **Norway**
 Acres: **5.92**
 Date: **12/10/2023**



WHITETAIL PROPERTIES REAL ESTATE
 HUNTING | RANCH | FARM | TIMBER

Maps Provided By:

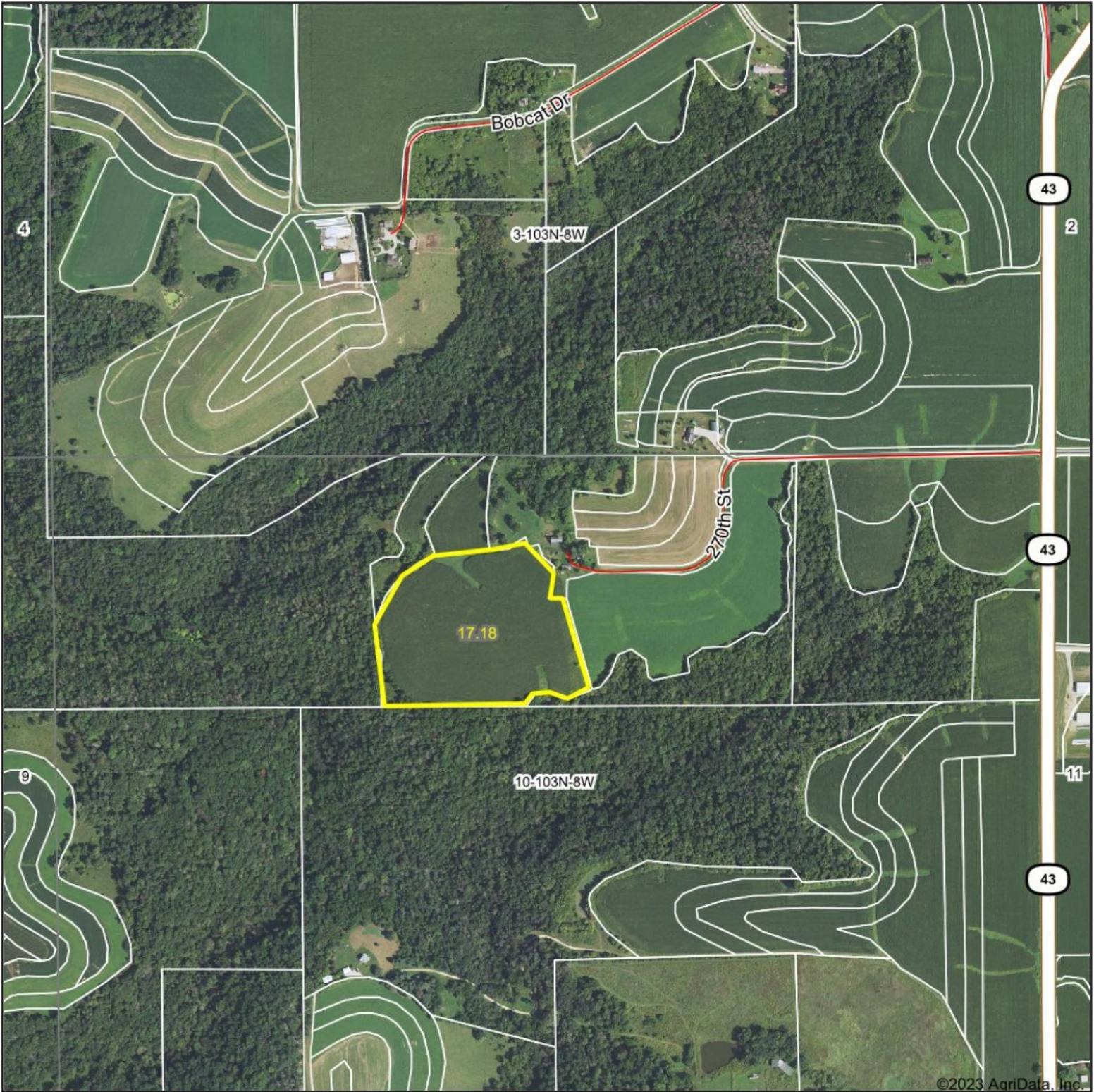


Area Symbol: MN045, Soil Area Version: 19

Code	Soil Description	Acres	Percent of field	PI Legend	Non-Irr Class *c	Productivity Index
Dv	Dubuque and Whalan silt loams, 12 to 17 percent slopes, moderately eroded	4.14	69.9%		Vle	32
Fd	Fayette silt loam, 6 to 12 percent slopes, moderately eroded	0.94	15.9%		IIIe	72
Dx	Dubuque and Whalan silt loams, 18 to 45 percent slopes	0.46	7.8%		VIIe	17
Ff	Fayette silt loam, 12 to 20 percent slopes, moderately eroded	0.38	6.4%		IVe	61
Weighted Average					5.47	39

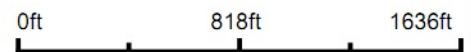
*c: Using Capabilities Class Dominant Condition Aggregation Method

Aerial Map TRACT 2



©2023 AgriData, Inc.

Boundary Center: 43.743343, -91.781688



WHITETAIL PROPERTIES REAL ESTATE
HUNTING | RANCH | FARM | TIMBER

Maps Provided By:



© AgriData, Inc. 2023 www.AgriDataInc.com

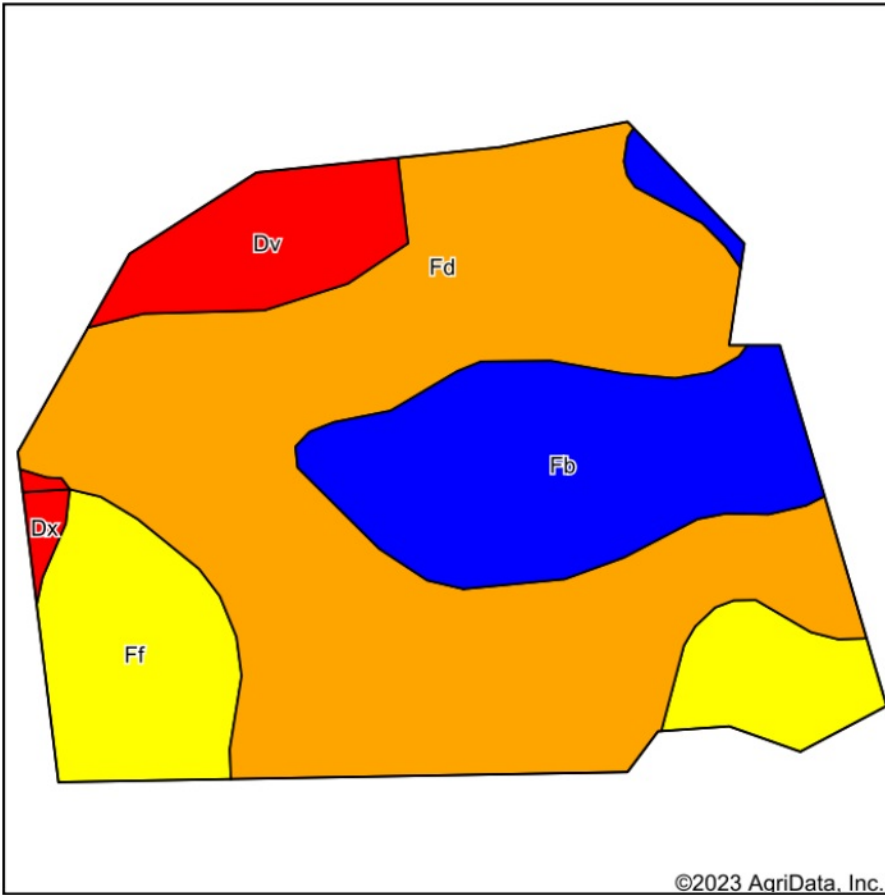
10-103N-8W
Fillmore County
Minnesota



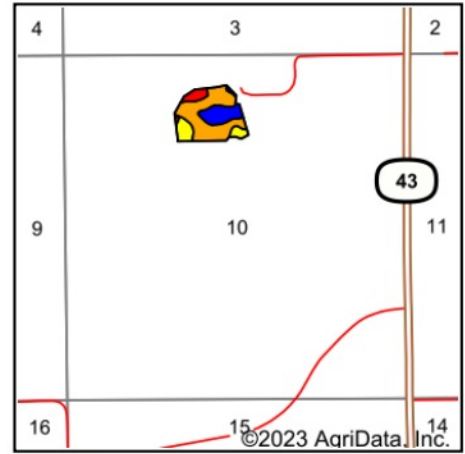
12/10/2023

Field borders provided by Farm Service Agency as of 5/21/2008.

Soils Map



Soils data provided by USDA and NRCS.



State: **Minnesota**
 County: **Fillmore**
 Location: **10-103N-8W**
 Township: **Norway**
 Acres: **17.18**
 Date: **12/10/2023**



WHITETAIL PROPERTIES REAL ESTATE
 HUNTING | RANCH | FARM | TIMBER

Maps Provided By:



Area Symbol: MN045, Soil Area Version: 19

Code	Soil Description	Acres	Percent of field	PI Legend	Non-Irr Class *c	Productivity Index
Fd	Fayette silt loam, 6 to 12 percent slopes, moderately eroded	9.73	56.6%		IIIe	72
Fb	Fayette silt loam, 2 to 6 percent slopes	3.45	20.1%		IIe	85
Ff	Fayette silt loam, 12 to 20 percent slopes, moderately eroded	2.64	15.4%		IVe	61
Dv	Dubuque and Whalan silt loams, 12 to 17 percent slopes, moderately eroded	1.25	7.3%		VIe	32
Dx	Dubuque and Whalan silt loams, 18 to 45 percent slopes	0.11	0.6%		VIIe	17
Weighted Average					3.20	69.7

*c: Using Capabilities Class Dominant Condition Aggregation Method

Aerial Map TRACT 3



Boundary Center: 43.744947, -91.778302



WHITETAIL PROPERTIES REAL ESTATE
HUNTING | RANCH | FARM | TIMBER

Maps Provided By:

surety
CUSTOMIZED ONLINE MAPPING

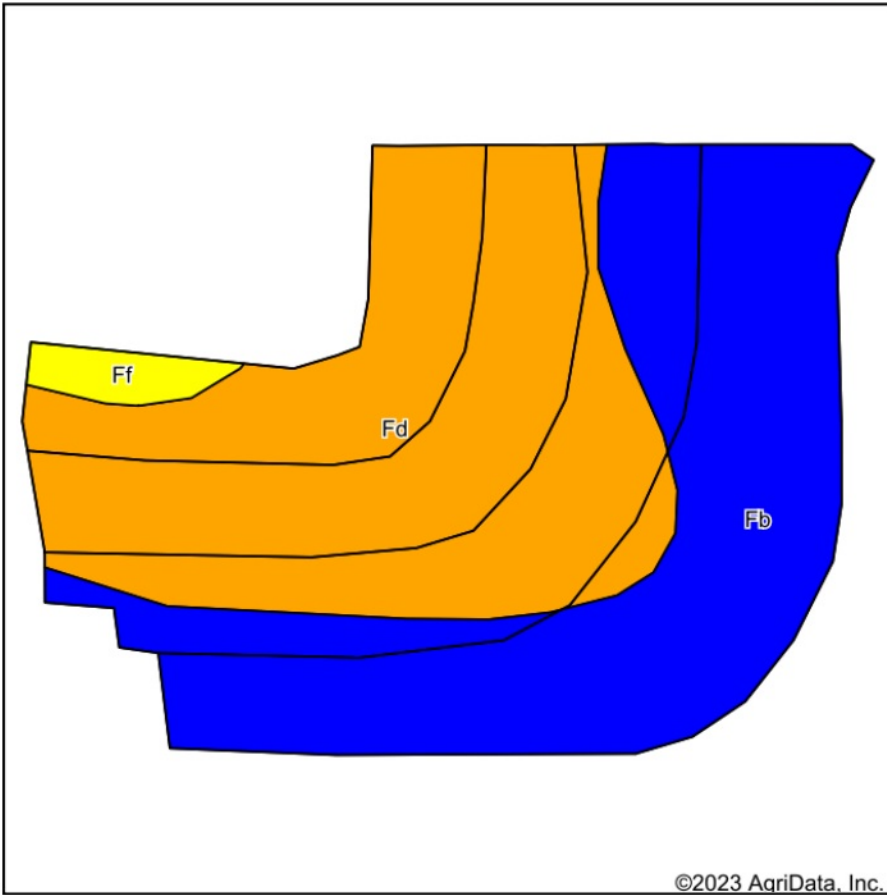
© AgriData, Inc. 2023 www.AgriDataInc.com

10-103N-8W
Fillmore County
Minnesota

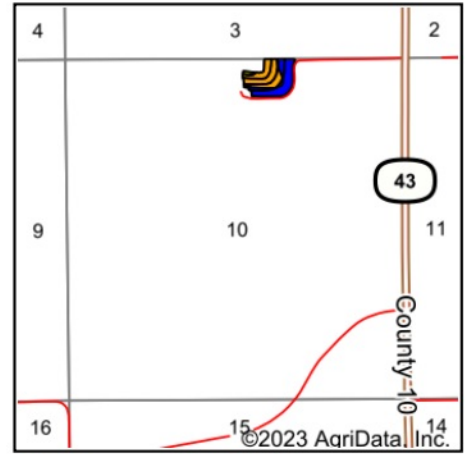


12/10/2023

Soils Map



Soils data provided by USDA and NRCS.



State: **Minnesota**
 County: **Fillmore**
 Location: **10-103N-8W**
 Township: **Norway**
 Acres: **8.11**
 Date: **12/10/2023**



WHITETAIL PROPERTIES REAL ESTATE
 HUNTING | RANCH | FARM | TIMBER

Maps Provided By:

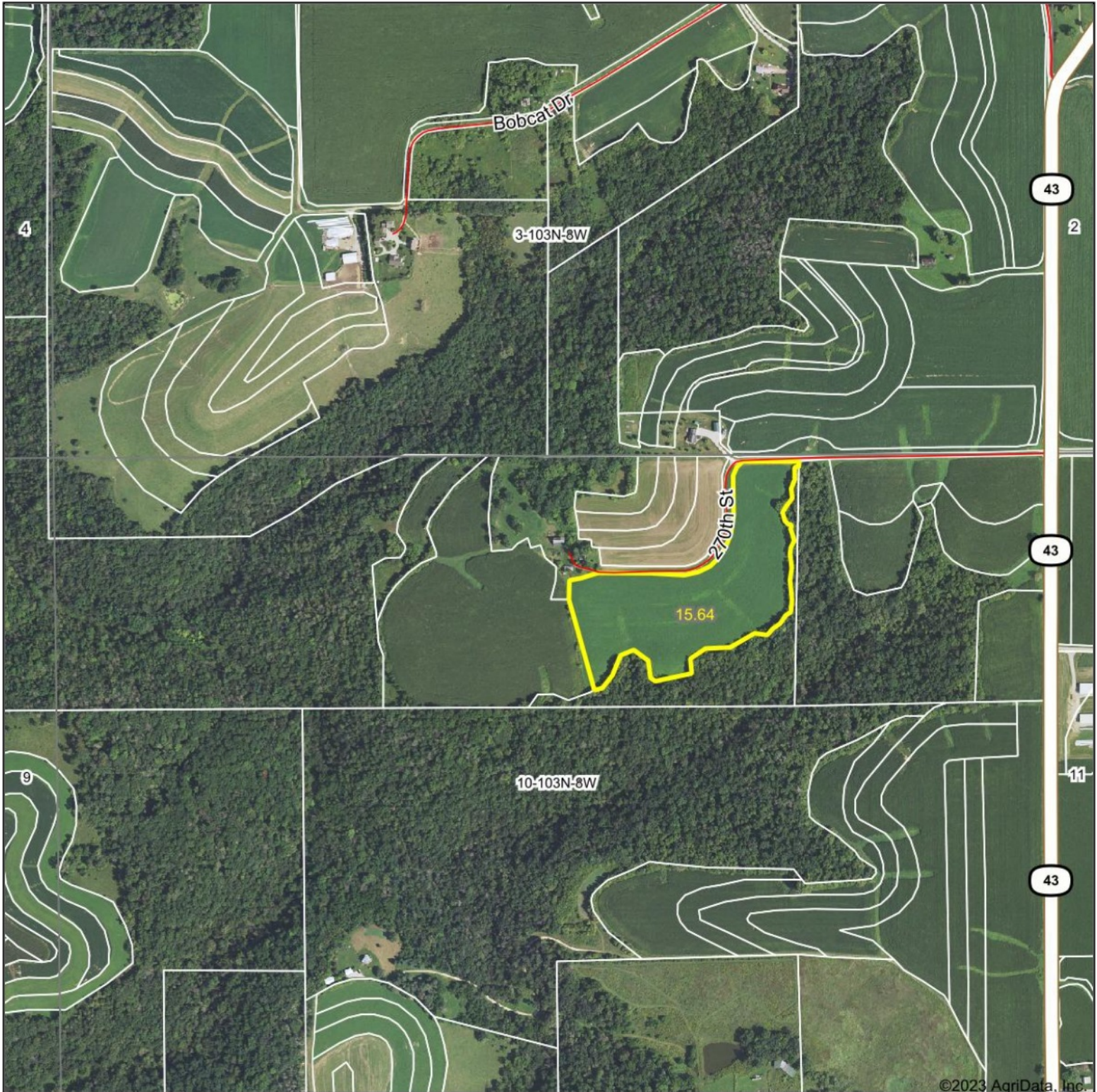


Area Symbol: MN045, Soil Area Version: 19

Code	Soil Description	Acres	Percent of field	PI Legend	Non-Irr Class *c	Productivity Index
Fd	Fayette silt loam, 6 to 12 percent slopes, moderately eroded	4.10	50.6%		IIIe	72
Fb	Fayette silt loam, 2 to 6 percent slopes	3.82	47.1%		IIe	85
Ff	Fayette silt loam, 12 to 20 percent slopes, moderately eroded	0.19	2.3%		IVe	61
Weighted Average					2.55	77.9

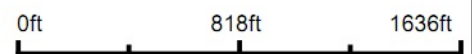
*c: Using Capabilities Class Dominant Condition Aggregation Method

Aerial Map TRACT 4



©2023 AgriData, Inc.

Boundary Center: 43.744012, -91.777673



WHITETAIL PROPERTIES REAL ESTATE
HUNTING | RANCH | FARM | TIMBER

Maps Provided By:

surety
CUSTOMIZED ONLINE MAPPING

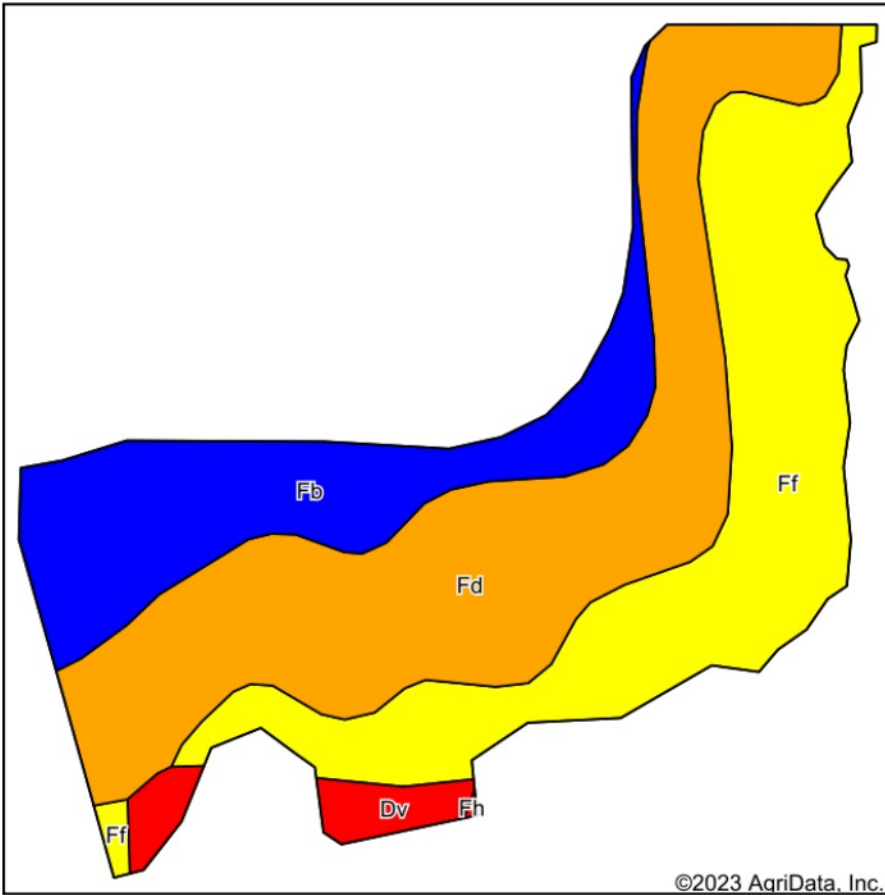
© AgriData, Inc. 2023 www.AgriDataInc.com

10-103N-8W
Fillmore County
Minnesota

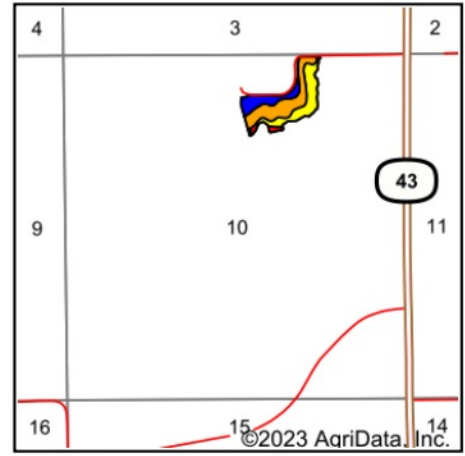


12/10/2023

Soils Map



Soils data provided by USDA and NRCS.



State: **Minnesota**
 County: **Fillmore**
 Location: **10-103N-8W**
 Township: **Norway**
 Acres: **15.64**
 Date: **12/10/2023**



WHITETAIL PROPERTIES REAL ESTATE
 HUNTING | RANCH | FARM | TIMBER

Maps Provided By:



Area Symbol: MN045, Soil Area Version: 19

Code	Soil Description	Acres	Percent of field	PI Legend	Non-Irr Class *c	Productivity Index
Fd	Fayette silt loam, 6 to 12 percent slopes, moderately eroded	6.51	41.6%		IIIe	72
Ff	Fayette silt loam, 12 to 20 percent slopes, moderately eroded	5.29	33.8%		IVe	61
Fb	Fayette silt loam, 2 to 6 percent slopes	3.30	21.1%		Ile	85
Dv	Dubuque and Whalan silt loams, 12 to 17 percent slopes, moderately eroded	0.54	3.5%		VIe	32
Weighted Average					3.23	69.6

*c: Using Capabilities Class Dominant Condition Aggregation Method