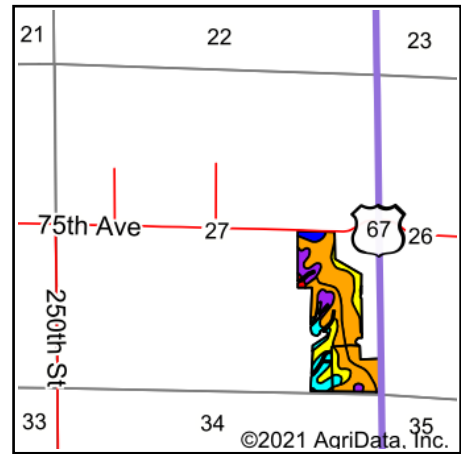
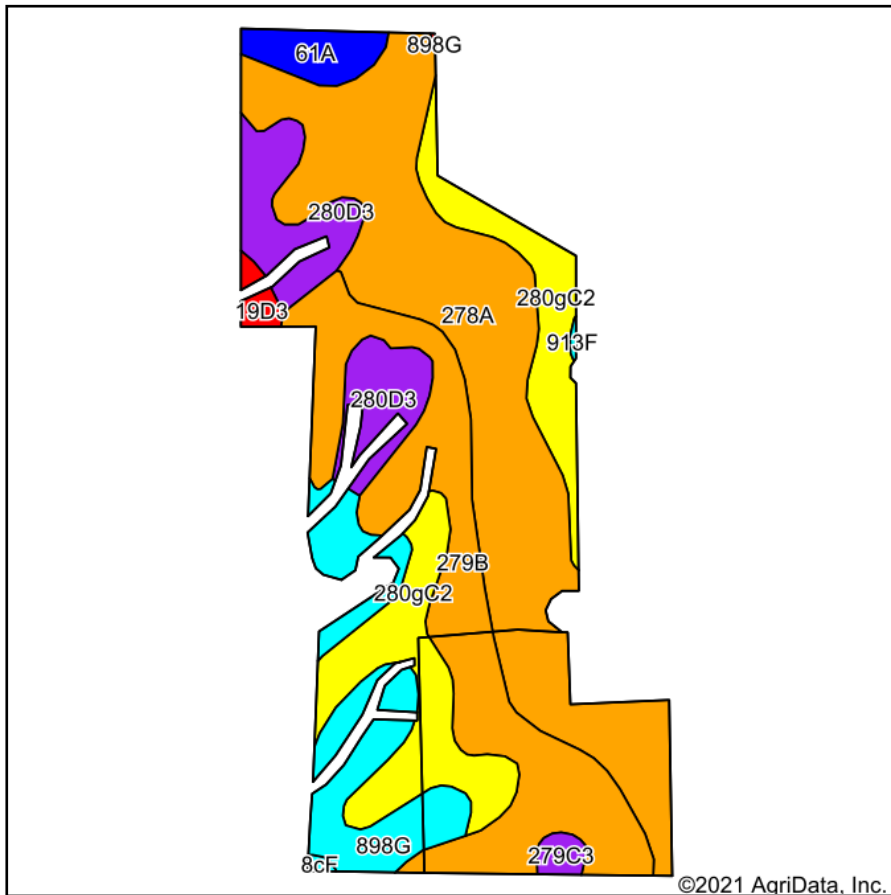


Soils Map



State: **Illinois**
 County: **Mercer**
 Location: **27-14N-2W**
 Township: **Greene**
 Acres: **49.97**
 Date: **8/25/2021**



WHITETAIL PROPERTIES REAL ESTATE
 HUNTING | RANCH | FARM | TIMBER

Maps Provided By:



Soils data provided by USDA and NRCS.

©2021 AgriData, Inc.

© AgriData, Inc. 2021

www.AgriDataInc.com

Area Symbol: IL131, Soil Area Version: 16

Code	Soil Description	Acres	Percent of field	Il. State Productivity Index Legend	Subsoil rooting ^a	Corn Bu/A	Soybeans Bu/A	Wheat Bu/A	Crop productivity index for optimum management
278A	Stronghurst silt loam, 0 to 2 percent slopes	18.33	36.7%		FAV	171	54	66	125
**279B	Rozetta silt loam, 2 to 5 percent slopes	11.45	22.9%		FAV	**162	**50	**64	**119
**280gC2	Fayette silt loam, glaciated, 5 to 10 percent slopes, eroded	8.44	16.9%		FAV	**155	**49	**61	**113
**898G	Hickory-Sylvan silt loams, 35 to 60 percent slopes	5.01	10.0%		FAV	**63	**21	**25	**48
**280D3	Fayette silty clay loam, glaciated, 10 to 18 percent slopes, severely eroded	4.45	8.9%		FAV	**135	**43	**53	**99
61A	Atterberry silt loam, 0 to 2 percent slopes	1.38	2.8%		FAV	182	56	71	132
**19D3	Sylvan silty clay loam, 10 to 18 percent slopes, severely eroded	0.42	0.8%		FAV	**122	**40	**49	**90
**279C3	Rozetta silty clay loam, 5 to 10 percent slopes, severely eroded	0.41	0.8%		FAV	**141	**44	**56	**103
**8cF	Hickory silt loam, cool mesic, 18 to 35 percent slopes	0.08	0.2%		FAV	**86	**29	**35	**65
Weighted Average						151.7	47.8	59.3	111.2

Table: Optimum Crop Productivity Ratings for Illinois Soil by K.R. Olson and J.M. Lang, Office of Research, ACES, University of Illinois at Champaign-Urbana. Version: 1/2/2012 Amended Table S2 B811

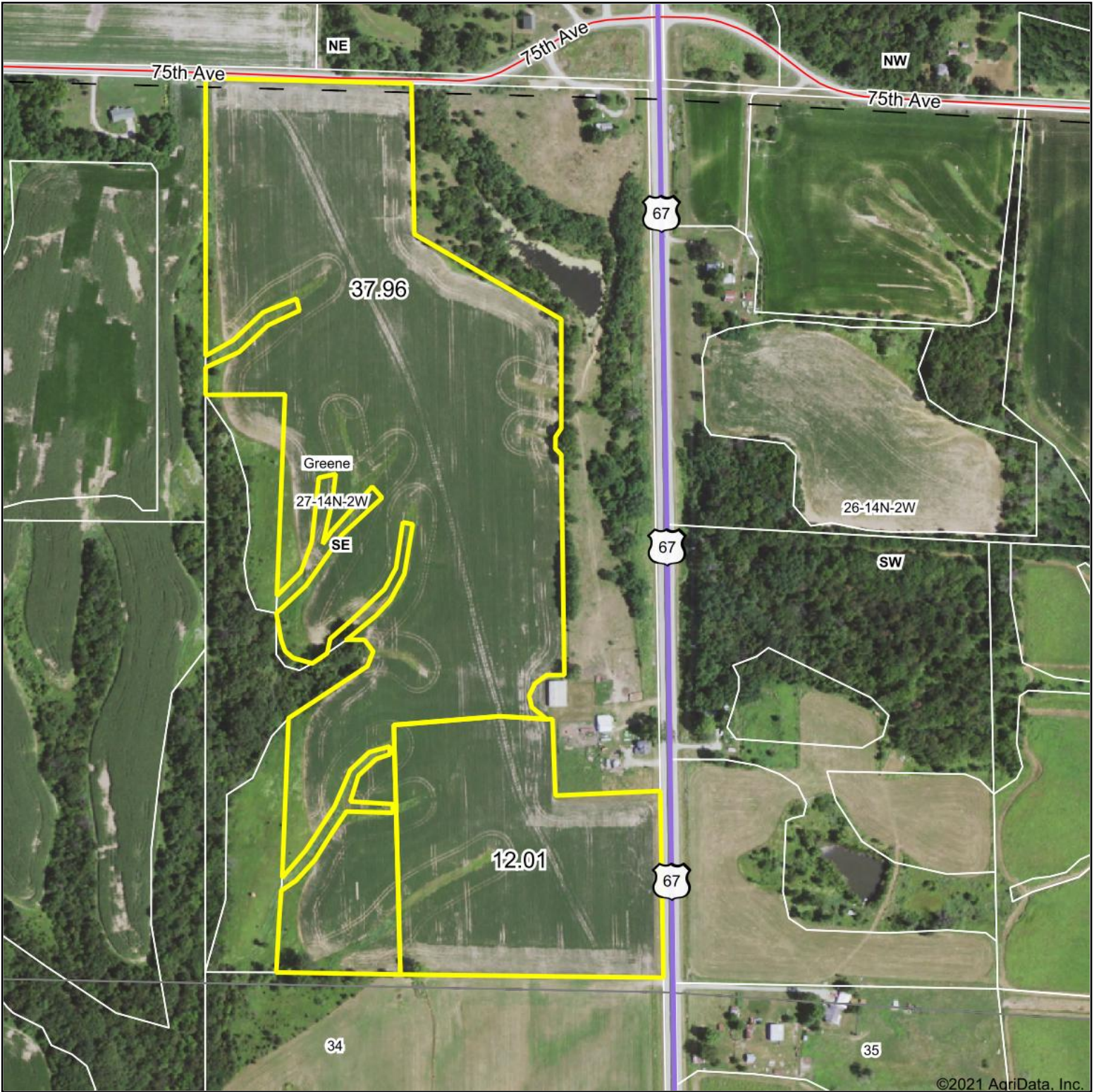
Crop yields and productivity indices for optimum management (B811) are maintained at the following NRES web site: <http://soilproductivity.nres.illinois.edu/>

** Indexes adjusted for slope and erosion according to Bulletin 811 Table S3

^a UNF = unfavorable; FAV = favorable

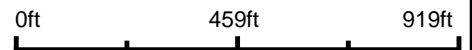
Soils data provided by USDA and NRCS. Soils data provided by University of Illinois at Champaign-Urbana.

Aerial Map



©2021 AgriData, Inc.

Map Center: 41° 10.2717', -90° 35.3276'



WHITETAIL PROPERTIES REAL ESTATE
HUNTING | RANCH | FARM | TIMBER

Maps Provided By:



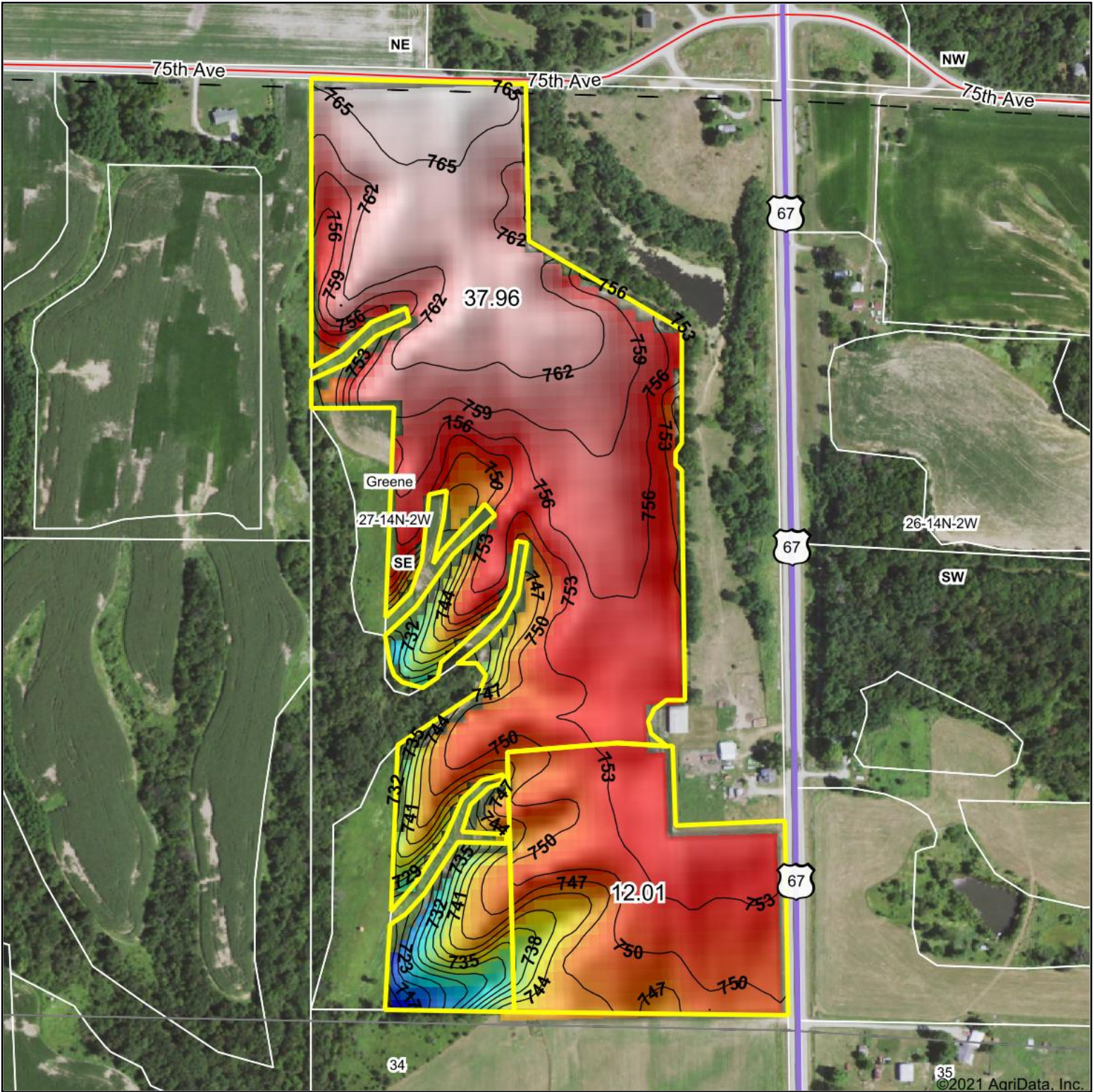
© AgriData, Inc. 2021 www.AgriDataInc.com

27-14N-2W
Mercer County
Illinois



8/25/2021

Field borders provided by Farm Service Agency as of 5/21/2008.



<p>Low Elevation High</p>	<p>Source: USGS 10 meter dem Interval(ft): 3 Min: 714.2 Max: 766.9 Range: 52.7 Average: 753.8 Standard Deviation: 8.66 ft</p>	<p>0ft 441ft 882ft</p> <p>8/25/2021</p> <p>27-14N-2W Mercer County Illinois</p> <p>map center: 41° 10.2717', -90° 35.3276'</p>
---------------------------	---	---

WHITETAIL PROPERTIES REAL ESTATE
HUNTING | RANCH | FARM | TIMBER
 Maps Provided By:

surety
CUSTOMIZED ONLINE MAPPING
 © AgriData, Inc. 2021 www.AgriDataInc.com
 Field borders provided by Farm Service Agency as of 5/21/2008.