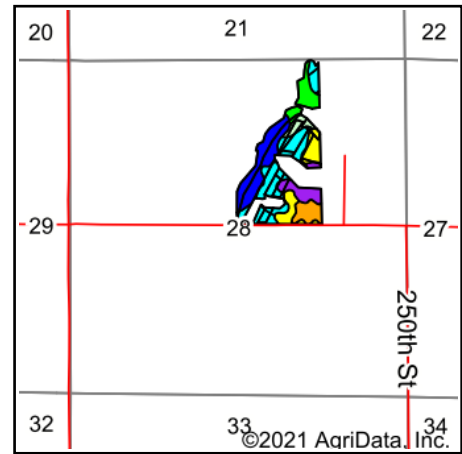
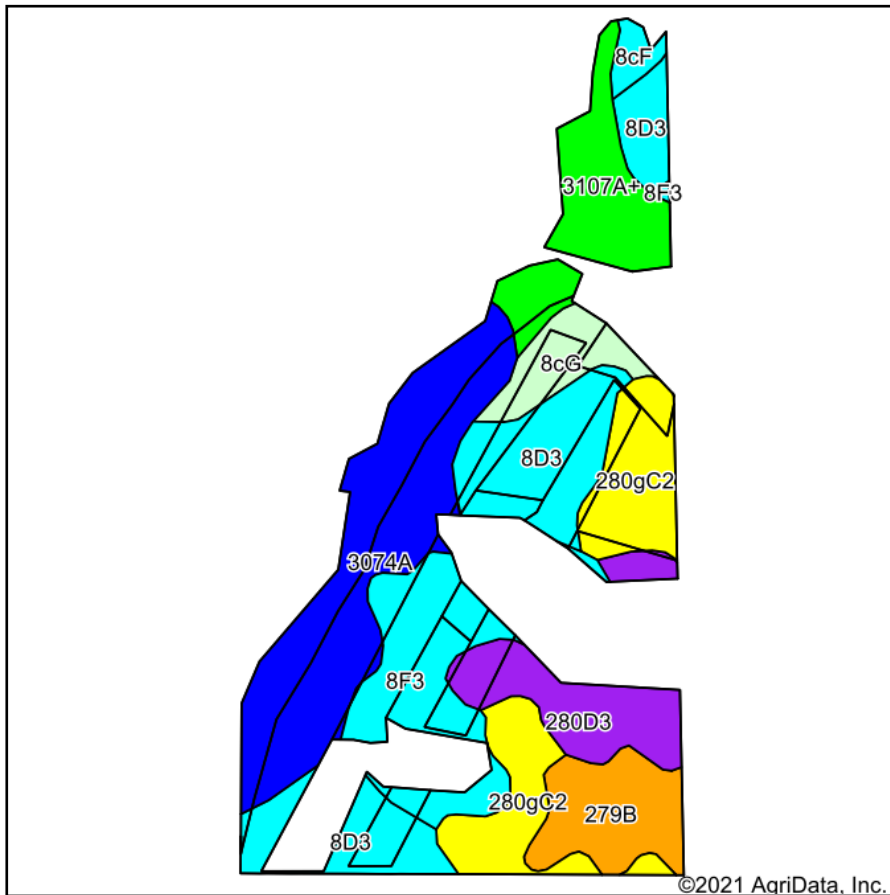


Soils Map



State: **Illinois**
 County: **Mercer**
 Location: **28-14N-2W**
 Township: **Greene**
 Acres: **39.71**
 Date: **8/25/2021**



WHITETAIL PROPERTIES REAL ESTATE
 HUNTING | RANCH | FARM | TIMBER

Maps Provided By:



Soils data provided by USDA and NRCS.

Area Symbol: IL131, Soil Area Version: 16

Code	Soil Description	Acres	Percent of field	Il. State Productivity Index Legend	Subsoil rooting ^a	Corn Bu/A	Soybeans Bu/A	Wheat Bu/A	Crop productivity index for optimum management
3074A	Radford silt loam, 0 to 2 percent slopes, frequently flooded	9.07	22.8%		FAV	186	58	73	136
**8D3	Hickory clay loam, 10 to 18 percent slopes, severely eroded	7.15	18.0%		FAV	**98	**33	**40	**75
**280gC2	Fayette silt loam, glaciated, 5 to 10 percent slopes, eroded	5.54	14.0%		FAV	**155	**49	**61	**113
**8F3	Hickory clay loam, 18 to 35 percent slopes, severely eroded	4.80	12.1%		FAV	**71	**24	**29	**54
3107A+	Sawmill silt loam, 0 to 2 percent slopes, frequently flooded, overwash	4.11	10.4%		FAV	189	60	71	139
**280D3	Fayette silty clay loam, glaciated, 10 to 18 percent slopes, severely eroded	3.59	9.0%		FAV	**135	**43	**53	**99
**279B	Rozetta silt loam, 2 to 5 percent slopes	3.14	7.9%		FAV	**162	**50	**64	**119
**8cG	Hickory silt loam, cool mesic, 35 to 60 percent slopes	1.78	4.5%		FAV	**58	**20	**24	**44
**8cF	Hickory silt loam, cool mesic, 18 to 35 percent slopes	0.53	1.3%		FAV	**86	**29	**35	**65
Weighted Average						138.7	44.3	54.6	102.4

Table: Optimum Crop Productivity Ratings for Illinois Soil by K.R. Olson and J.M. Lang, Office of Research, ACES, University of Illinois at Champaign-Urbana. Version: 1/2/2012 Amended Table S2 B811

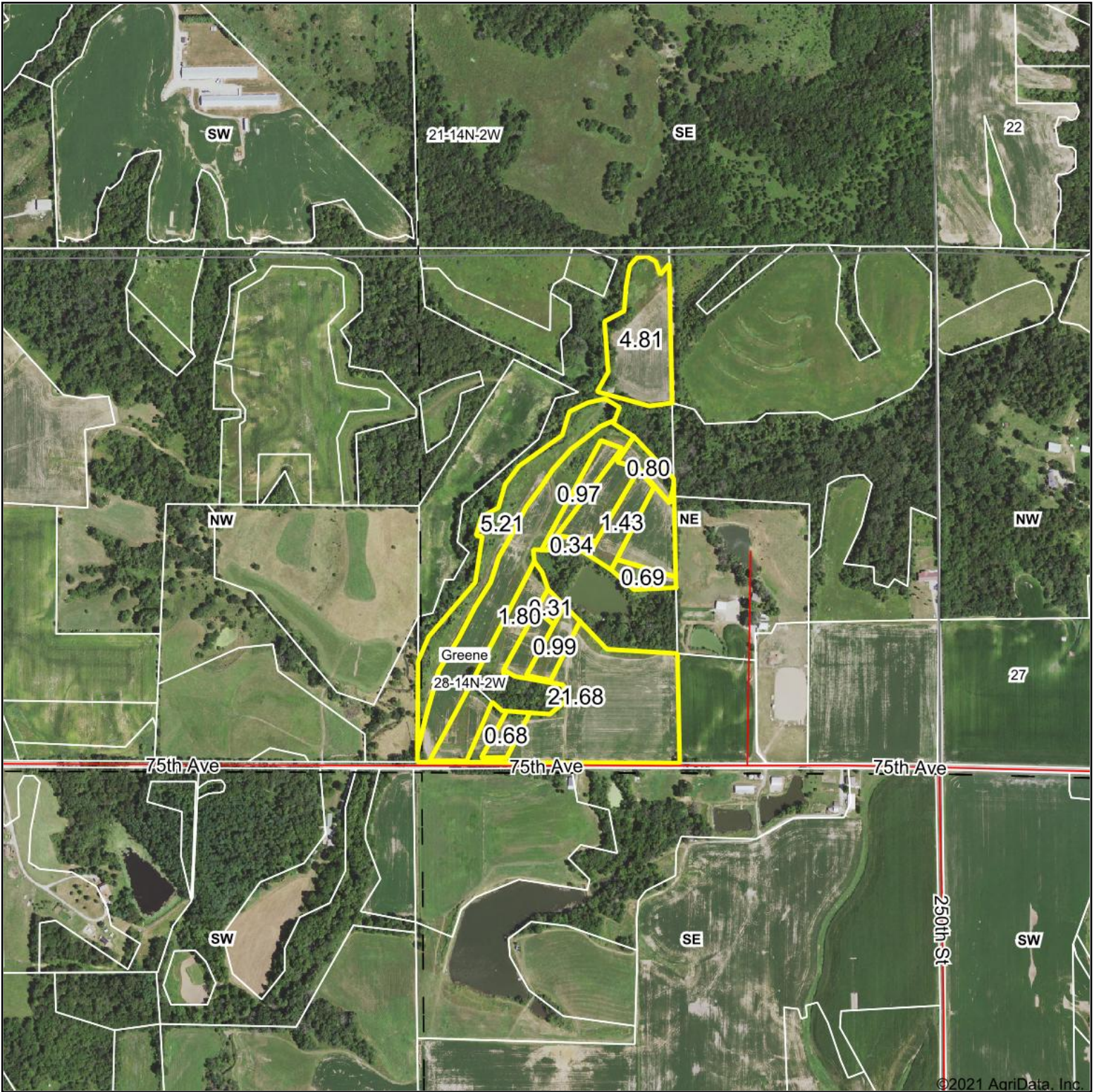
Crop yields and productivity indices for optimum management (B811) are maintained at the following NRES web site: <http://soilproductivity.nres.illinois.edu/>

** Indexes adjusted for slope and erosion according to Bulletin 811 Table S3

^a UNF = unfavorable; FAV = favorable

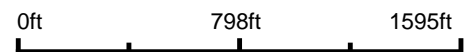
Soils data provided by USDA and NRCS. Soils data provided by University of Illinois at Champaign-Urbana.

Aerial Map



©2021 AgriData, Inc.

Map Center: 41° 10.7366', -90° 36.8418'



WHITETAIL PROPERTIES REAL ESTATE
HUNTING | RANCH | FARM | TIMBER

Maps Provided By:



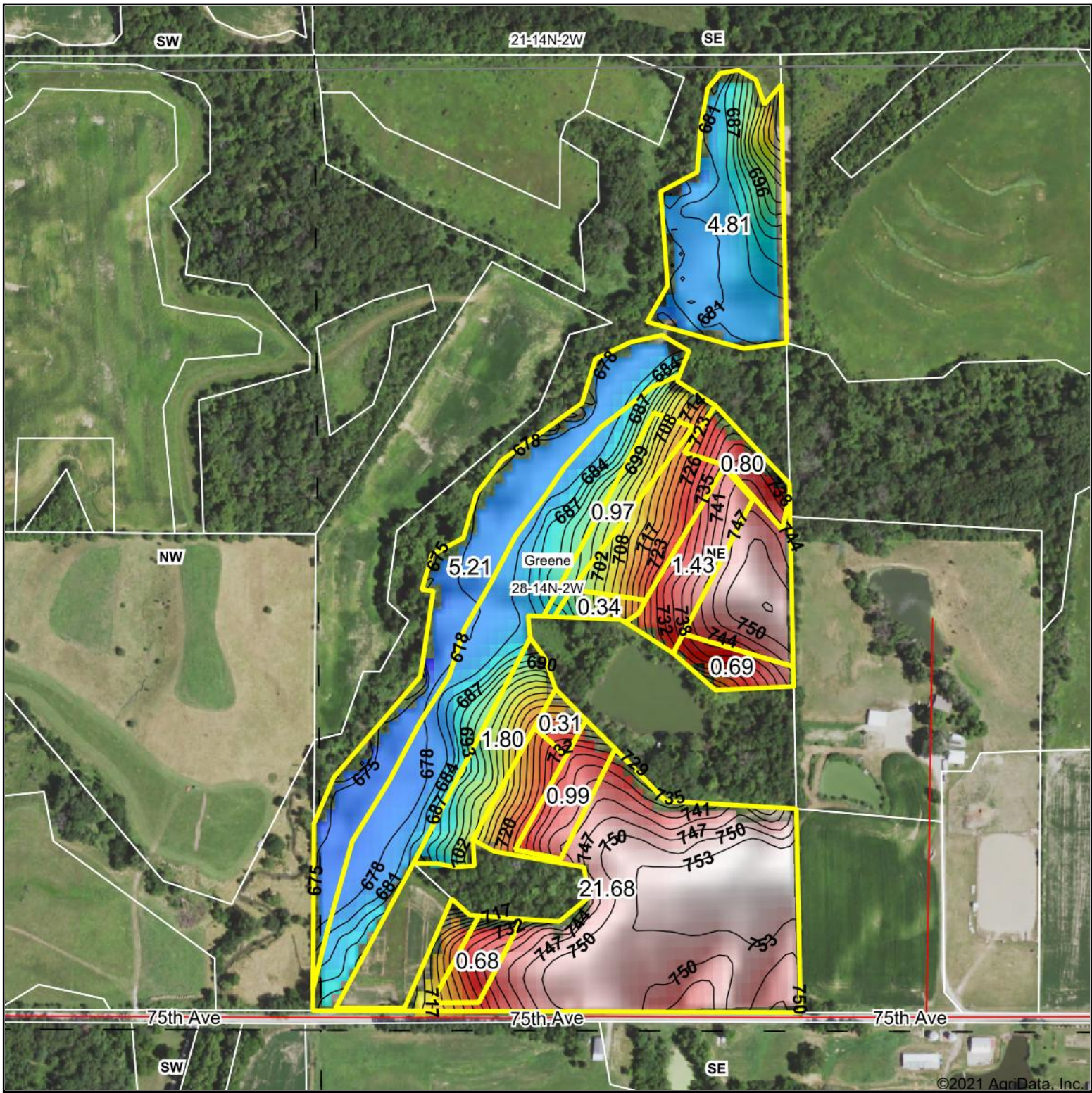
© AgriData, Inc. 2021 www.AgriDataInc.com

28-14N-2W
Mercer County
Illinois

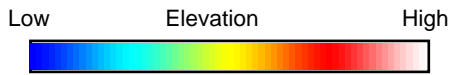


8/25/2021

Field borders provided by Farm Service Agency as of 5/21/2008.



©2021 AgriData, Inc.



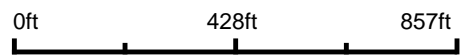
WHITETAIL PROPERTIES REAL ESTATE
 HUNTING | RANCH | FARM | TIMBER
 Maps Provided By:



© AgriData, Inc. 2021 www.AgriDataInc.com

Field borders provided by Farm Service Agency as of 5/21/2008.

Source: USGS 10 meter dem
 Interval(ft): 3
 Min: 668.1
 Max: 756.1
 Range: 88.0
 Average: 715.9
 Standard Deviation: 29.76 ft



8/25/2021

28-14N-2W
Mercer County
Illinois

map center: 41° 10.7366', -90° 36.8418'