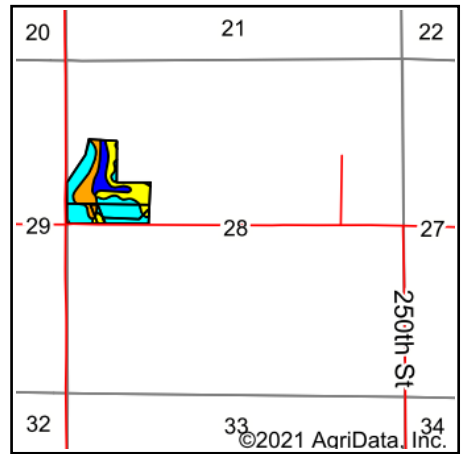
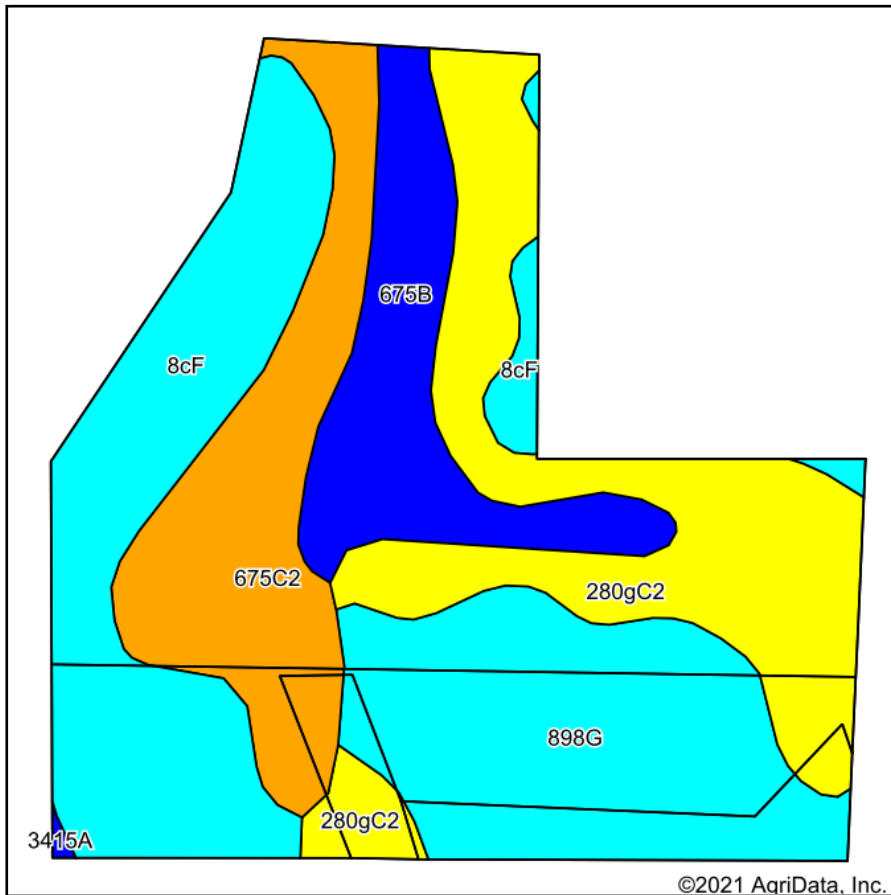


# Soils Map



State: **Illinois**  
 County: **Mercer**  
 Location: **28-14N-2W**  
 Township: **Greene**  
 Acres: **28.45**  
 Date: **8/25/2021**



WHITETAIL PROPERTIES REAL ESTATE  
 HUNTING | RANCH | FARM | TIMBER

Maps Provided By:



Soils data provided by USDA and NRCS.

©2021 AgriData, Inc.

Area Symbol: IL131, Soil Area Version: 16

Code	Soil Description	Acres	Percent of field	Il. State Productivity Index Legend	Subsoil rooting <sup>a</sup>	Corn Bu/A	Soybeans Bu/A	Wheat Bu/A	Crop productivity index for optimum management
**280gC2	Fayette silt loam, glaciated, 5 to 10 percent slopes, eroded	6.92	24.3%		FAV	**155	**49	**61	**113
**8cF	Hickory silt loam, cool mesic, 18 to 35 percent slopes	6.81	23.9%		FAV	**86	**29	**35	**65
**898G	Hickory-Sylvan silt loams, 35 to 60 percent slopes	6.33	22.2%		FAV	**63	**21	**25	**48
**675C2	Greenbush silt loam, 5 to 10 percent slopes, eroded	4.79	16.8%		FAV	**171	**54	**65	**125
**675B	Greenbush silt loam, 2 to 5 percent slopes	3.60	12.7%		FAV	**182	**57	**69	**133
<b>Weighted Average</b>						<b>124.1</b>	<b>39.8</b>	<b>48.5</b>	<b>91.6</b>

**Table: Optimum Crop Productivity Ratings for Illinois Soil by K.R. Olson and J.M. Lang, Office of Research, ACES, University of Illinois at Champaign-Urbana.** Version: 1/2/2012 Amended Table S2 B811

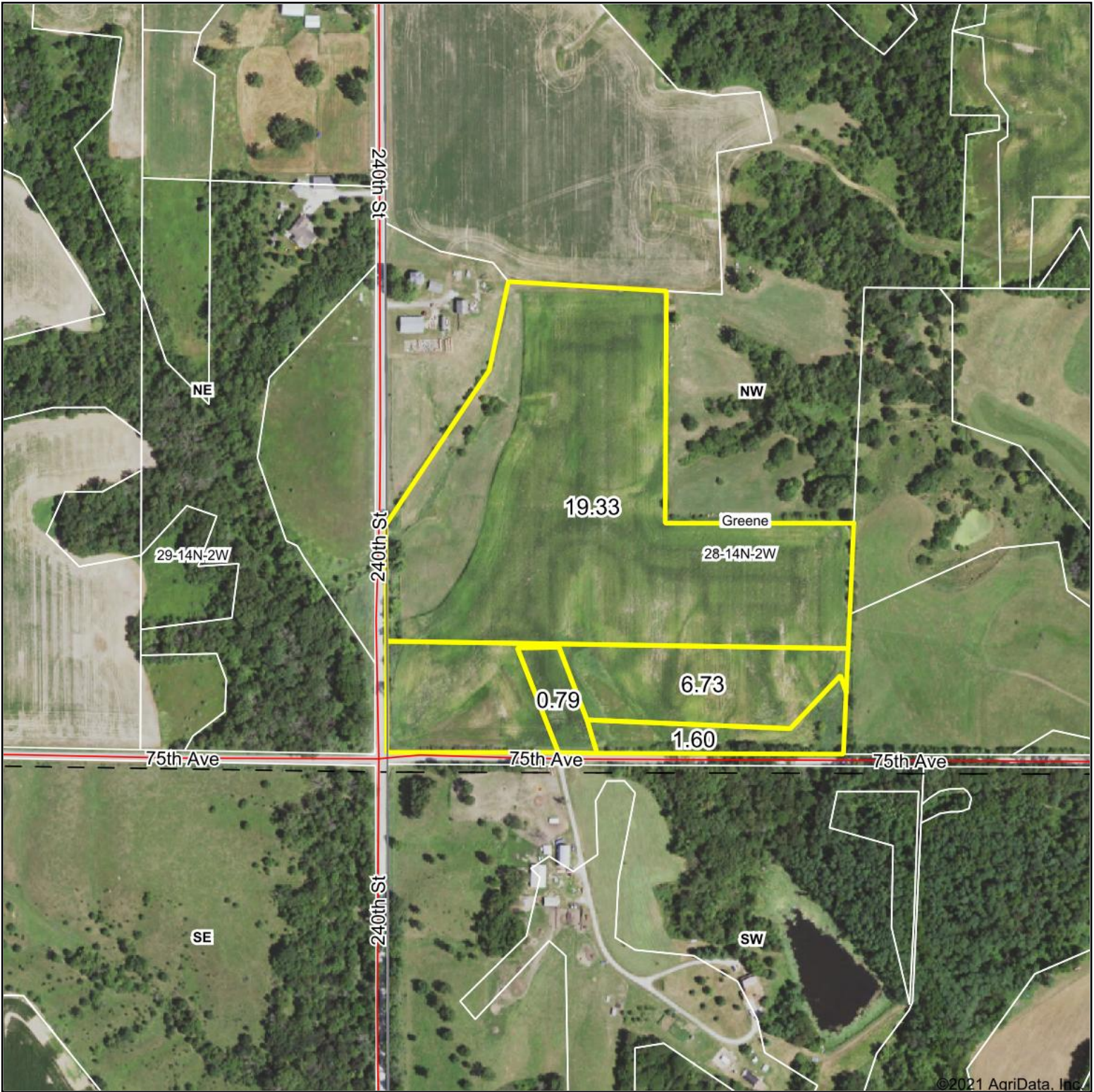
Crop yields and productivity indices for optimum management (B811) are maintained at the following NRES web site: <http://soilproductivity.nres.illinois.edu/>

\*\* Indexes adjusted for slope and erosion according to Bulletin 811 Table S3

<sup>a</sup> UNF = unfavorable; FAV = favorable

Soils data provided by USDA and NRCS. Soils data provided by University of Illinois at Champaign-Urbana.

# Aerial Map



©2021 AgriData, Inc.

Map Center: 41° 10.665', -90° 37.4656'



WHITETAIL PROPERTIES REAL ESTATE  
HUNTING | RANCH | FARM | TIMBER

Maps Provided By:



© AgriData, Inc. 2021 www.AgriDataInc.com

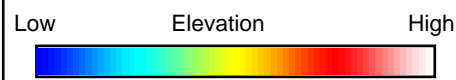
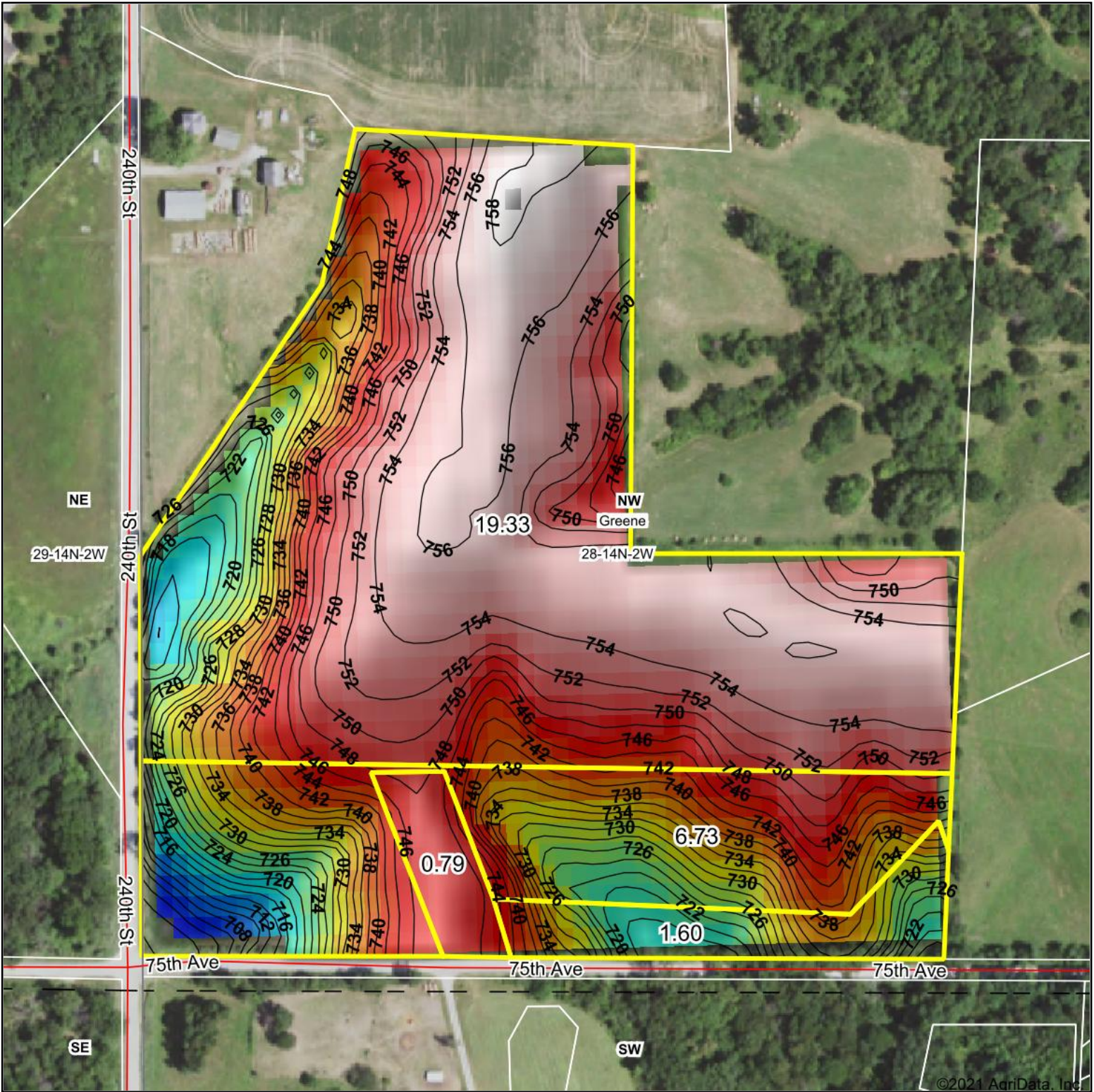
**28-14N-2W**  
**Mercer County**  
**Illinois**



8/25/2021

Field borders provided by Farm Service Agency as of 5/21/2008.





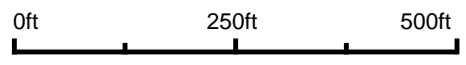
  
 WHITETAIL PROPERTIES REAL ESTATE  
 HUNTING | RANCH | FARM | TIMBER  
 Maps Provided By:

 **surety**<sup>®</sup>  
 CUSTOMIZED ONLINE MAPPING

© AgriData, Inc. 2021 www.AgriDataInc.com

Field borders provided by Farm Service Agency as of 5/21/2008.

Source: USGS 10 meter dem  
 Interval(ft): 2  
 Min: 700.6  
 Max: 758.5  
 Range: 57.9  
 Average: 743.0  
 Standard Deviation: 12.8 ft



**28-14N-2W**  
**Mercer County**  
**Illinois**

map center: 41° 10.665', -90° 37.4656'