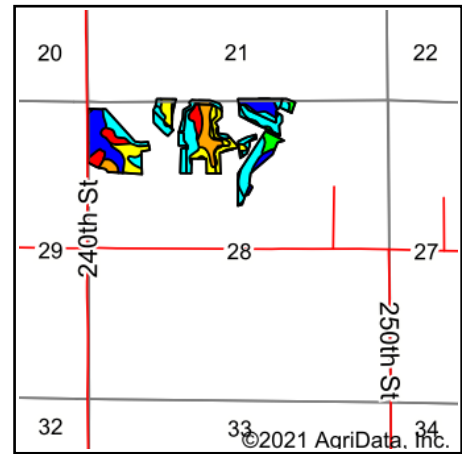
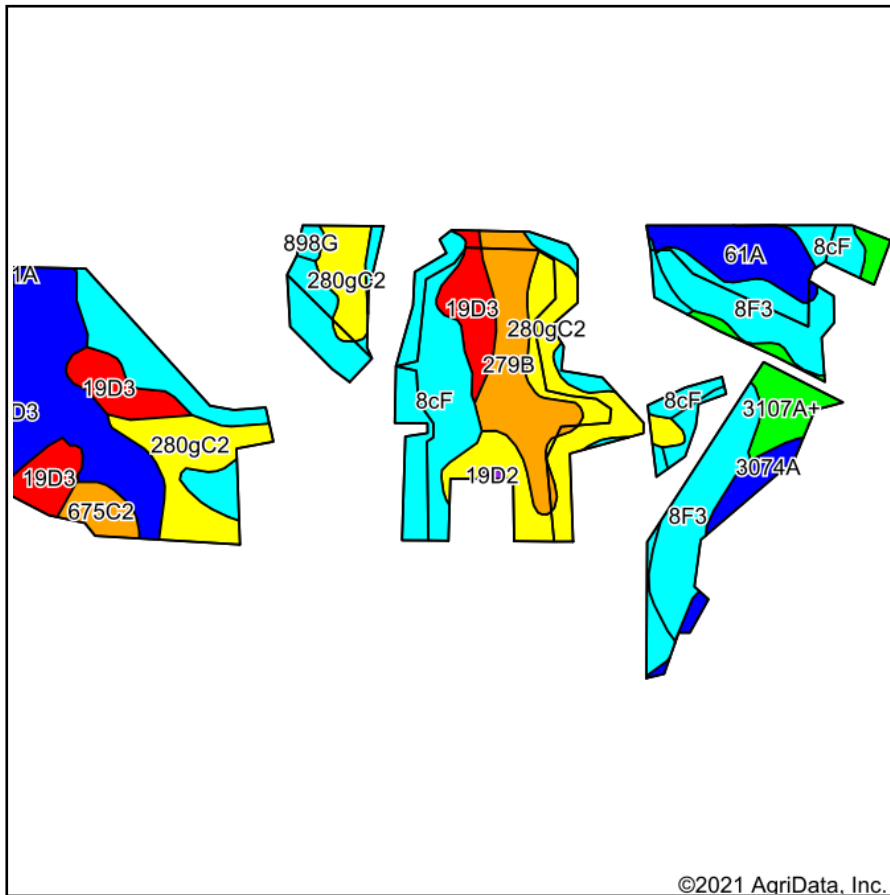


Soils Map



State: **Illinois**
 County: **Mercer**
 Location: **28-14N-2W**
 Township: **Greene**
 Acres: **61.41**
 Date: **8/25/2021**



WHITETAIL PROPERTIES REAL ESTATE
 HUNTING | RANCH | FARM | TIMBER

Maps Provided By:



© AgriData, Inc. 2021

www.AgriDataInc.com



Soils data provided by USDA and NRCS.

©2021 AgriData, Inc.

Area Symbol: IL131, Soil Area Version: 16

Code	Soil Description	Acres	Percent of field	Il. State Productivity Index Legend	Subsoil rooting ^a	Corn Bu/A	Soybeans Bu/A	Wheat Bu/A	Crop productivity index for optimum management
**8cF	Hickory silt loam, cool mesic, 18 to 35 percent slopes	15.45	25.2%		FAV	**86	**29	**35	**65
**280gC2	Fayette silt loam, glaciated, 5 to 10 percent slopes, eroded	11.75	19.1%		FAV	**155	**49	**61	**113
**8F3	Hickory clay loam, 18 to 35 percent slopes, severely eroded	8.14	13.3%		FAV	**71	**24	**29	**54
**675B	Greenbush silt loam, 2 to 5 percent slopes	7.42	12.1%		FAV	**182	**57	**69	**133
**19D3	Sylvan silty clay loam, 10 to 18 percent slopes, severely eroded	5.19	8.5%		FAV	**122	**40	**49	**90
**279B	Rozetta silt loam, 2 to 5 percent slopes	4.95	8.1%		FAV	**162	**50	**64	**119
61A	Atterberry silt loam, 0 to 2 percent slopes	3.09	5.0%		FAV	182	56	71	132
3107A+	Sawmill silt loam, 0 to 2 percent slopes, frequently flooded, overwash	2.54	4.1%		FAV	189	60	71	139
3074A	Radford silt loam, 0 to 2 percent slopes, frequently flooded	1.31	2.1%		FAV	186	58	73	136
**675C2	Greenbush silt loam, 5 to 10 percent slopes, eroded	1.21	2.0%		FAV	**171	**54	**65	**125
**898G	Hickory-Sylvan silt loams, 35 to 60 percent slopes	0.29	0.5%		FAV	**63	**21	**25	**48
**19D2	Sylvan silt loam, 10 to 18 percent slopes, eroded	0.07	0.1%		FAV	**134	**44	**53	**99
Weighted Average						130.8	41.9	51.5	96.5

Table: Optimum Crop Productivity Ratings for Illinois Soil by K.R. Olson and J.M. Lang, Office of Research, ACES, University of Illinois at Champaign-Urbana. Version: 1/2/2012 Amended Table S2 B811

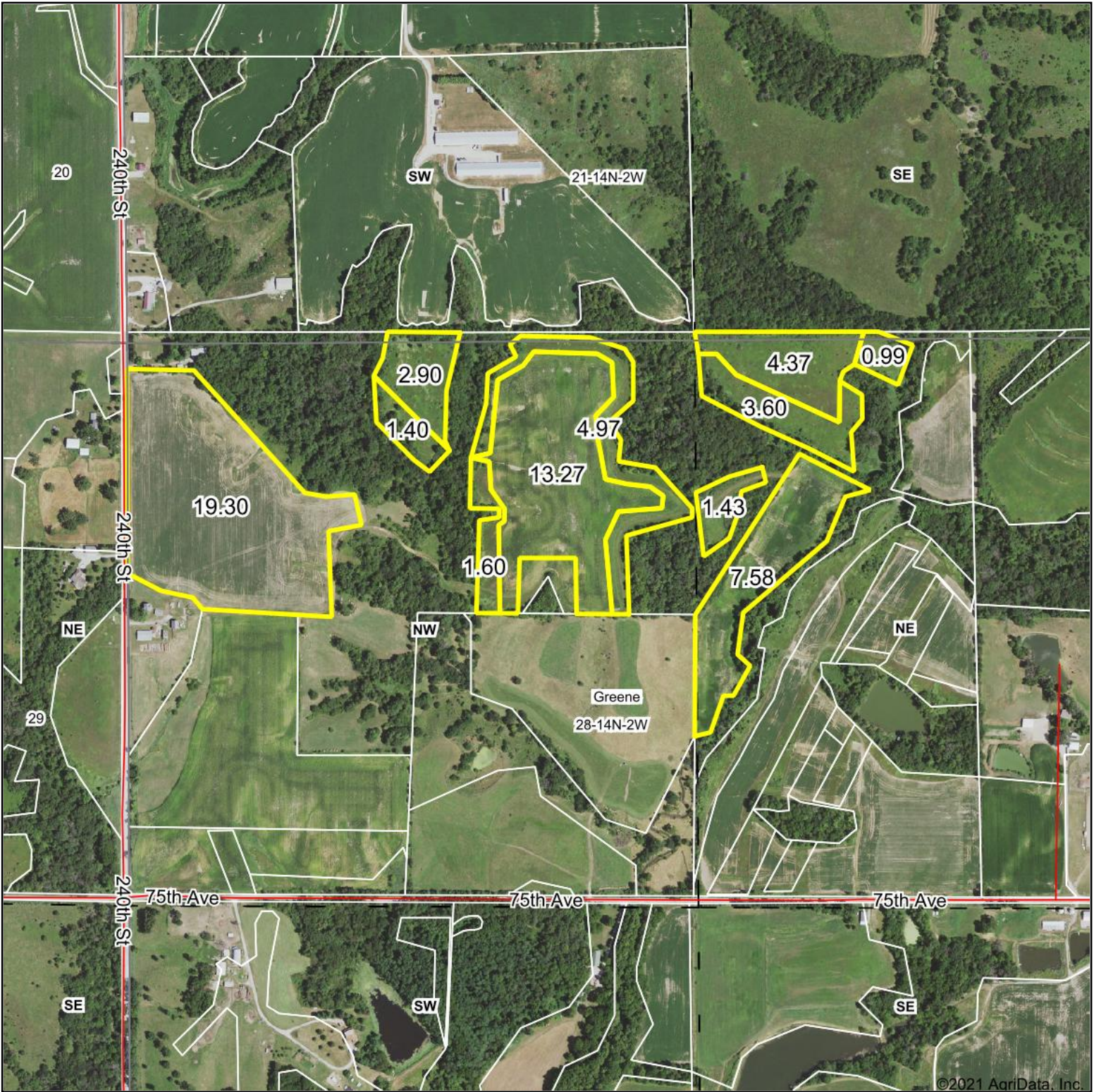
Crop yields and productivity indices for optimum management (B811) are maintained at the following NRES web site: <http://soilproductivity.nres.illinois.edu/>

** Indexes adjusted for slope and erosion according to Bulletin 811 Table S3

^a UNF = unfavorable; FAV = favorable

Soils data provided by USDA and NRCS. Soils data provided by University of Illinois at Champaign-Urbana.

Aerial Map



Map Center: 41° 10.8295', -90° 37.1327'

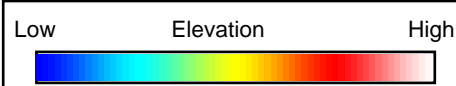
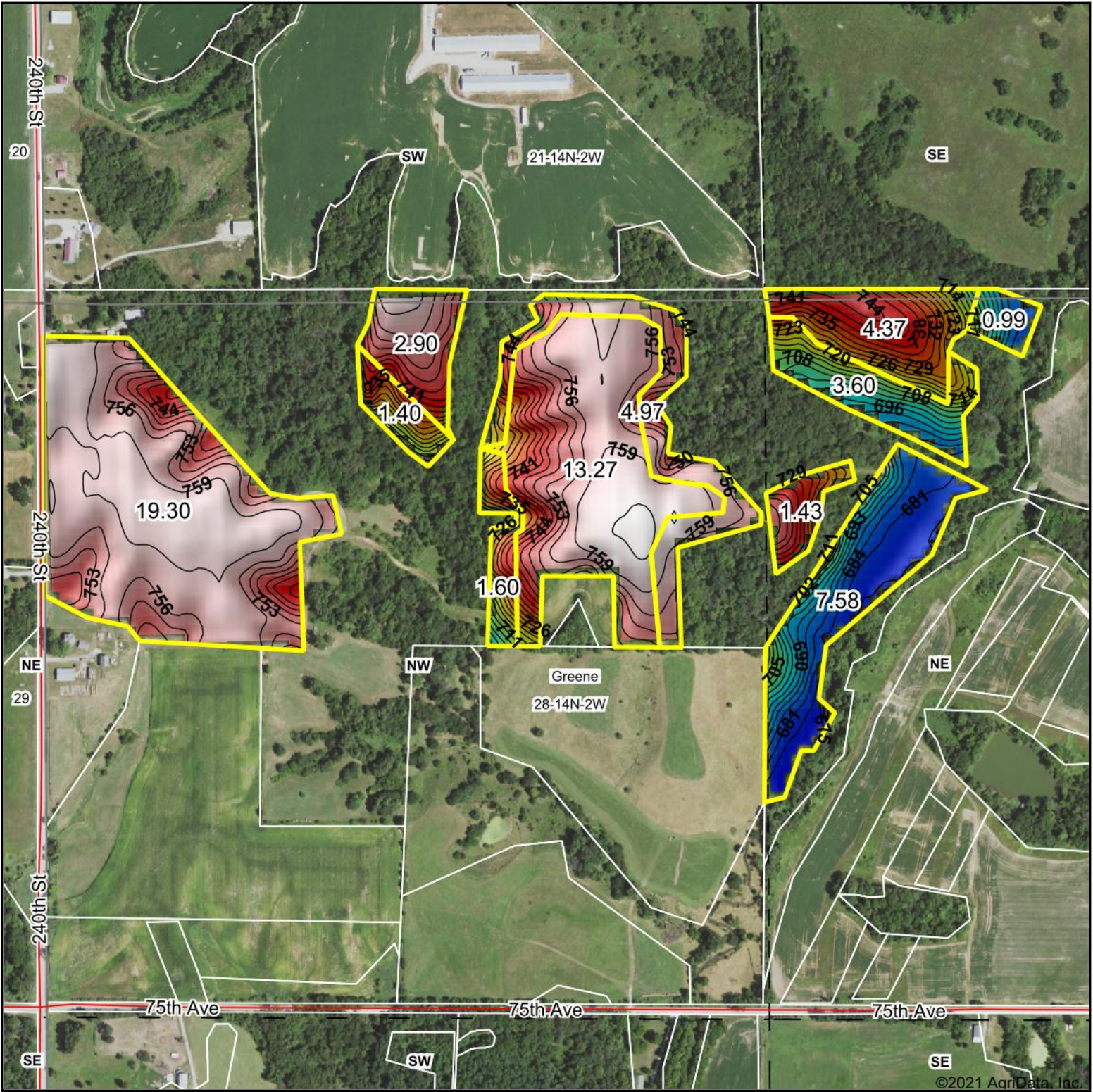


28-14N-2W
Mercer County
Illinois

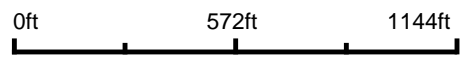


Maps Provided By:
 **surety**[®]
CUSTOMIZED ONLINE MAPPING
© AgriData, Inc. 2021 www.AgriDataInc.com

8/25/2021



Source: USGS 10 meter dem
Interval(ft): 3
Min: 675.5
Max: 762.5
Range: 87.0
Average: 740.6
Standard Deviation: 25.2 ft



28-14N-2W
Mercer County
Illinois

map center: 41° 10.8295', -90° 37.1327'


 WHITETAIL PROPERTIES REAL ESTATE
HUNTING | RANCH | FARM | TIMBER
 Maps Provided By:

 CUSTOMIZED ONLINE MAPPING
© AgriData, Inc. 2021 www.AgriDataInc.com
 Field borders provided by Farm Service Agency as of 5/21/2008.