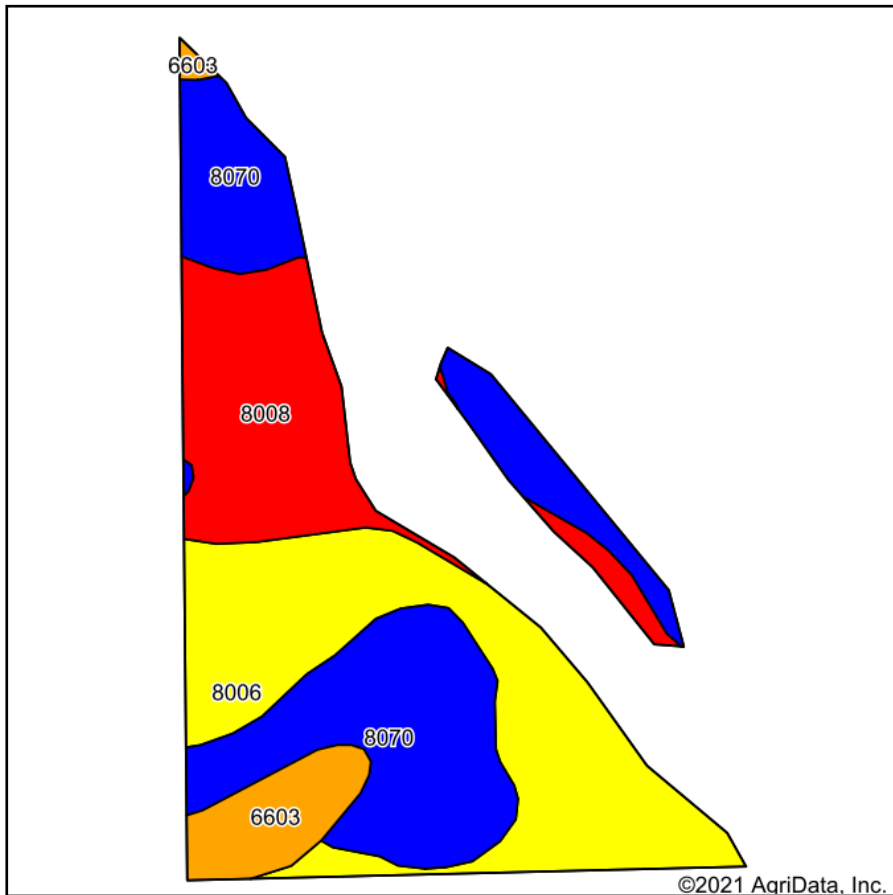
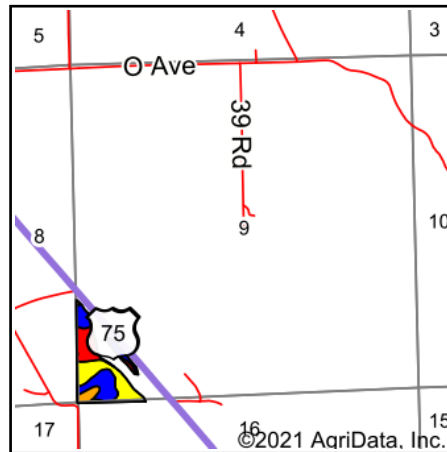


Soils Map



Soils data provided by USDA and NRCS.



State: **Nebraska**
 County: **Thurston**
 Location: **9-24N-10E**
 Township: **Anderson**
 Acres: **18.6**
 Date: **8/26/2021**



WHITETAIL PROPERTIES REAL ESTATE
 HUNTING | RANCH | FARM | TIMBER

Maps Provided By:



Area Symbol: NE173, Soil Area Version: 18

Code	Soil Description	Acres	Percent of field	NCCPI Overall Legend	*n NCCPI Overall	*n NCCPI Corn	*n NCCPI Soybeans
8070	Monona silt loam, 11 to 17 percent slopes	6.71	36.1%		83	83	79
8006	Ida silt loam, 11 to 17 percent slopes, eroded	6.52	35.1%		66	63	66
8008	Ida silt loam, 17 to 30 percent slopes, eroded	4.03	21.7%		35	35	28
6603	Alcester silty clay loam, 2 to 6 percent slopes	1.34	7.2%		75	75	72
Weighted Average					*n 66.1	*n 65	*n 62.9

*n: The aggregation method is "Weighted Average using all components"
 Soils data provided by USDA and NRCS.

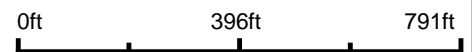
Aerial Map



©2021 AgriData, Inc.



Map Center: 42° 3.7778', -96° 18.4378'



WHITETAIL PROPERTIES REAL ESTATE
HUNTING | RANCH | FARM | TIMBER

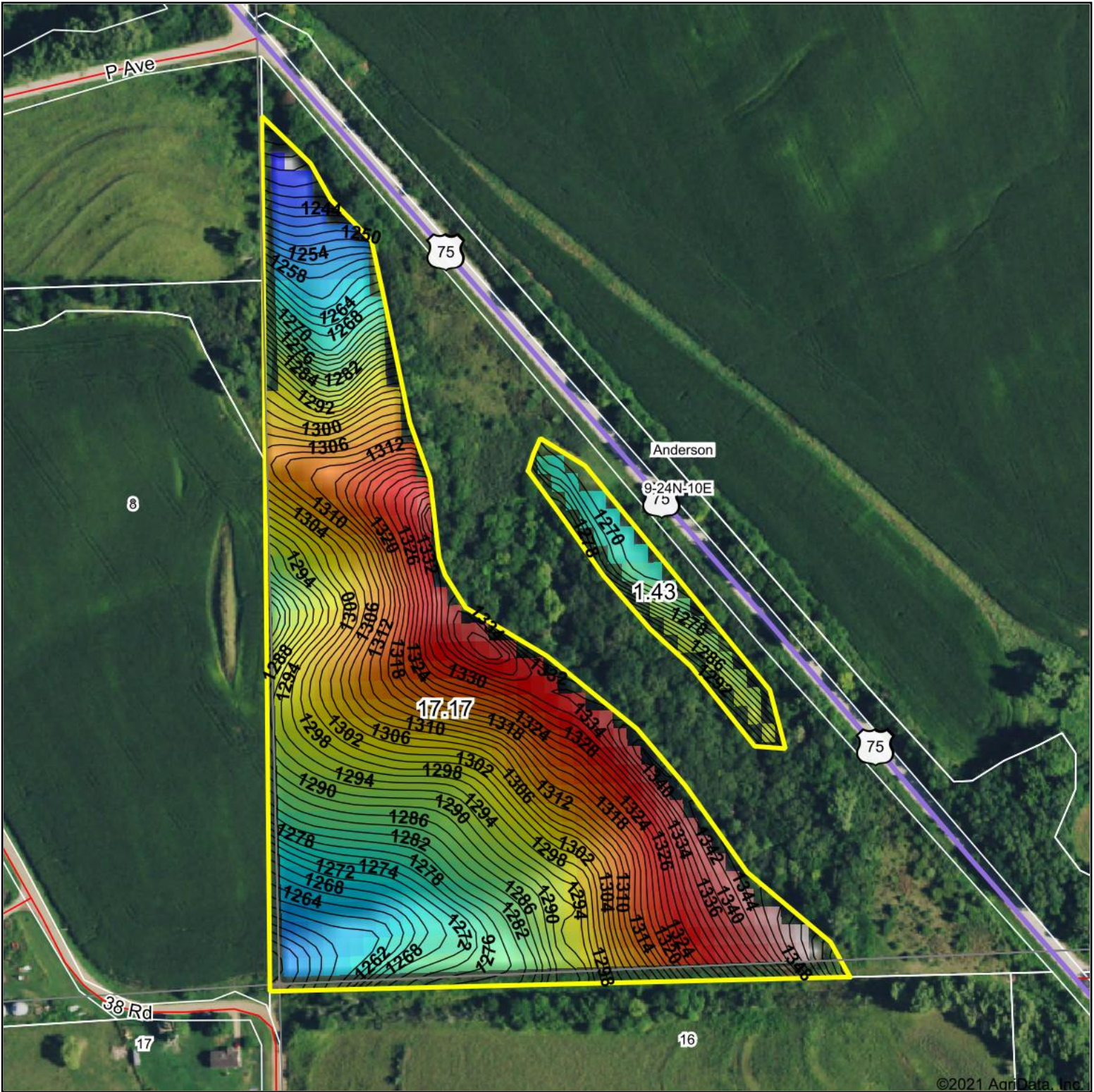
9-24N-10E
Thurston County
Nebraska



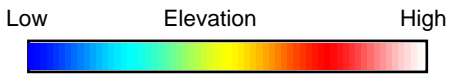
Maps Provided By:
 **surety**[®]
CUSTOMIZED ONLINE MAPPING
© AgriData, Inc. 2021 www.AgriDataInc.com

8/26/2021

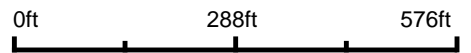
Field borders provided by Farm Service Agency as of 5/21/2008.



©2021 AgriData, Inc.



Source: USGS 10 meter dem
 Interval(ft): 2
 Min: 1,235.0
 Max: 1,358.3
 Range: 123.3
 Average: 1,297.0
 Standard Deviation: 24.44 ft



9-24N-10E
Thurston County
Nebraska

8/26/2021

map center: 42° 3.7778', -96° 18.4378'

WHITETAIL PROPERTIES REAL ESTATE
 HUNTING | RANCH | FARM | TIMBER
 Maps Provided By:



© AgriData, Inc. 2021 www.AgriDataInc.com

Field borders provided by Farm Service Agency as of 5/21/2008.