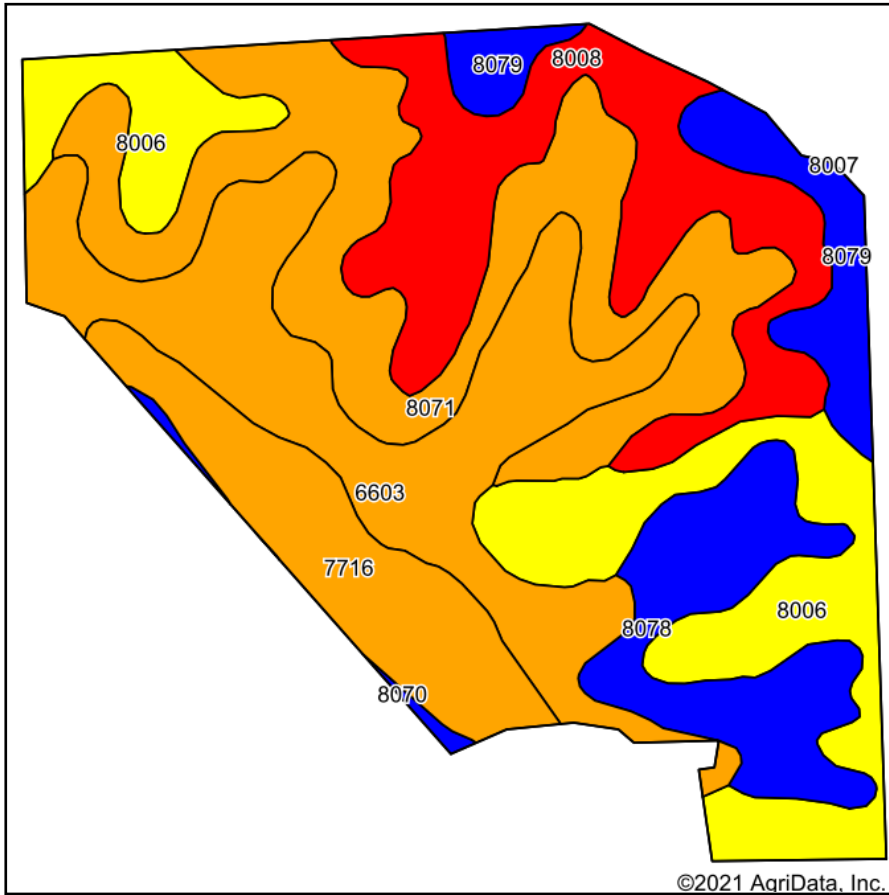
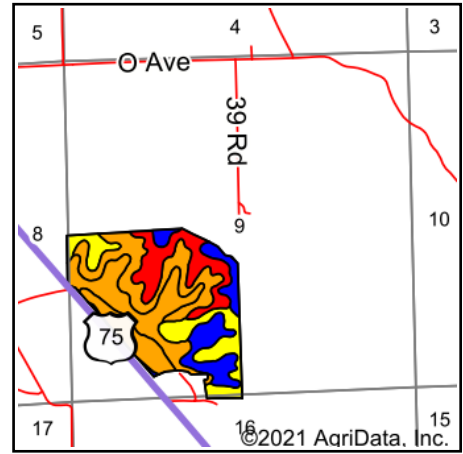


# Soils Map



Soils data provided by USDA and NRCS.



State: **Nebraska**  
 County: **Thurston**  
 Location: **9-24N-10E**  
 Township: **Anderson**  
 Acres: **113.56**  
 Date: **9/1/2021**



WHITETAIL PROPERTIES REAL ESTATE  
 HUNTING | RANCH | FARM | TIMBER

Maps Provided By:



© AgriData, Inc. 2021

www.AgriDataInc.com



Area Symbol: NE173, Soil Area Version: 18

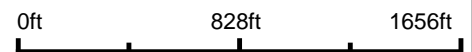
Code	Soil Description	Acres	Percent of field	NCCPI Overall Legend	*n NCCPI Overall	*n NCCPI Corn	*n NCCPI Soybeans
8071	Monona silt loam, 11 to 17 percent slopes, eroded	24.05	21.2%		76	76	69
6603	Alcester silty clay loam, 2 to 6 percent slopes	23.34	20.6%		75	75	72
8006	Ida silt loam, 11 to 17 percent slopes, eroded	19.54	17.2%		66	63	66
8008	Ida silt loam, 17 to 30 percent slopes, eroded	17.75	15.6%		35	35	28
7716	McPaul silt loam, occasionally flooded	10.94	9.6%		71	62	71
8078	Monona silt loam, 6 to 11 percent slopes	10.87	9.6%		88	88	86
8079	Monona silt loam, 6 to 11 percent slopes, eroded	6.56	5.8%		81	81	75
8070	Monona silt loam, 11 to 17 percent slopes	0.51	0.4%		83	83	79
<b>Weighted Average</b>					<b>*n 68.7</b>	<b>*n 67.3</b>	<b>*n 64.9</b>

\*n: The aggregation method is "Weighted Average using all components"  
 Soils data provided by USDA and NRCS.

# Aerial Map



Map Center: 42° 3.9989', -96° 18.2666'



WHITETAIL PROPERTIES REAL ESTATE  
HUNTING | RANCH | FARM | TIMBER

Maps Provided By:



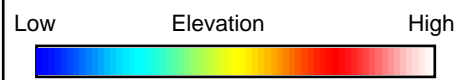
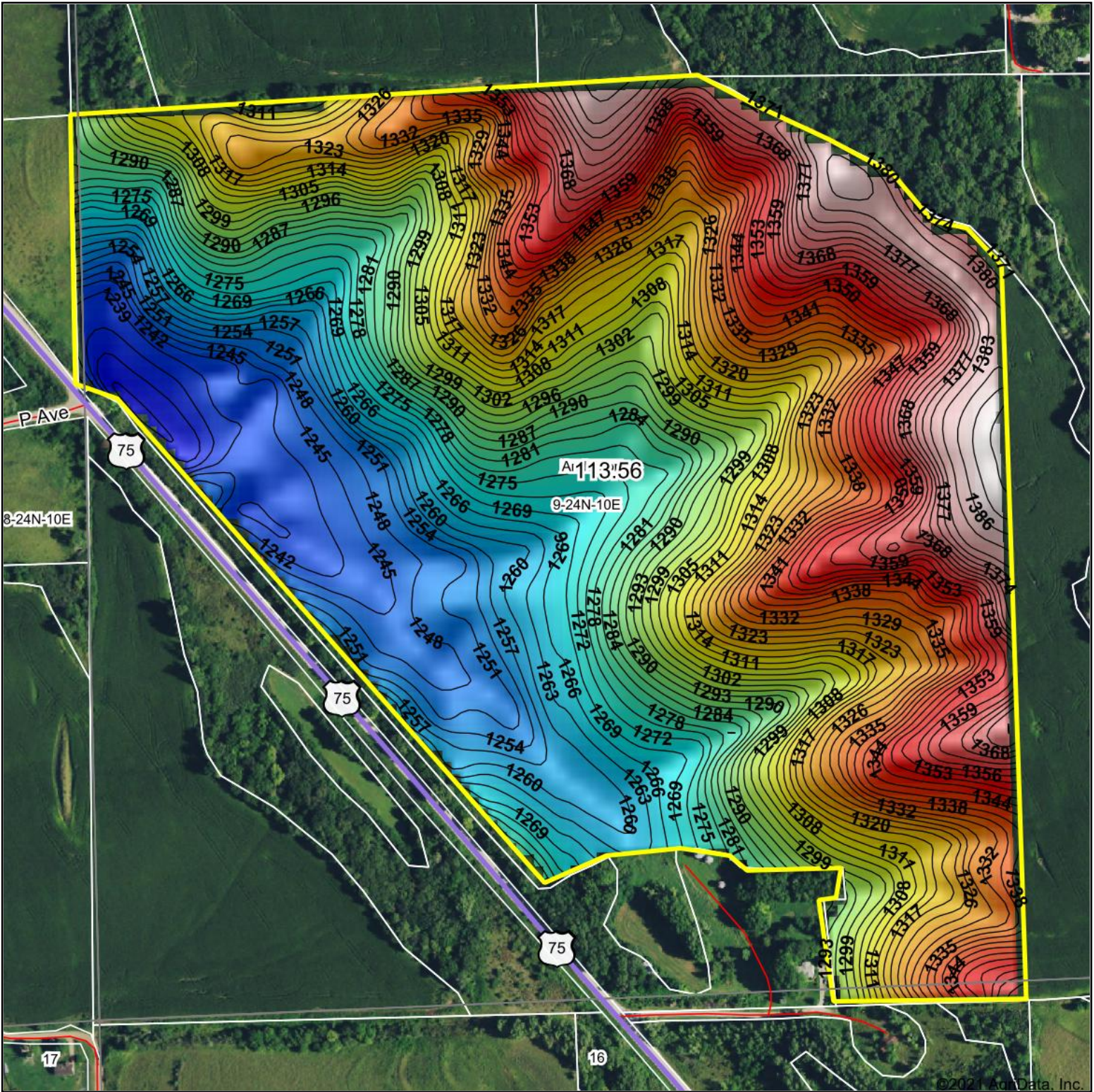
© AgriData, Inc. 2021 www.AgriDataInc.com

**9-24N-10E**  
**Thurston County**  
**Nebraska**



9/1/2021

Field borders provided by Farm Service Agency as of 5/21/2008.



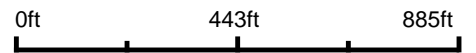
  
 WHITETAIL PROPERTIES REAL ESTATE  
HUNTING | RANCH | FARM | TIMBER  
 Maps Provided By:

 **surety**<sup>®</sup>  
CUSTOMIZED ONLINE MAPPING

© AgriData, Inc. 2021 www.AgriDataInc.com

Field borders provided by Farm Service Agency as of 5/21/2008.

Source: USGS 10 meter dem  
 Interval(ft): 3  
 Min: 1,229.0  
 Max: 1,393.3  
 Range: 164.3  
 Average: 1,306.2  
 Standard Deviation: 41.86 ft



9/1/2021

**9-24N-10E**  
**Thurston County**  
**Nebraska**

map center: 42° 3.9989', -96° 18.2666'