

# FSA INFO PACKET

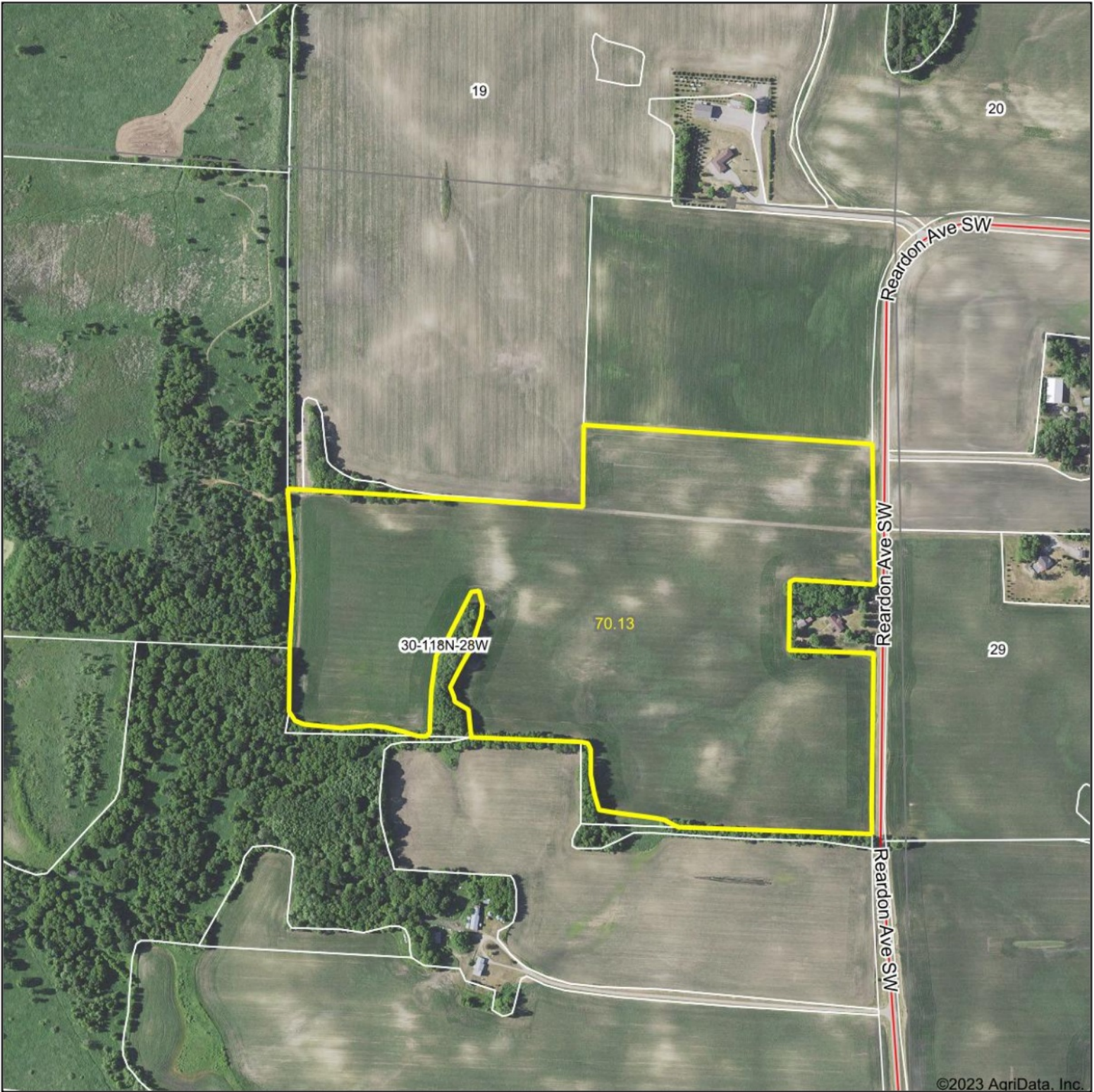


A DIVISION OF WHITETAIL  
PROPERTIES REAL ESTATE, LLC

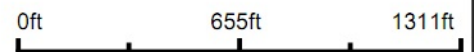
[RANCHANDFARMAUCTIONS.COM](http://RANCHANDFARMAUCTIONS.COM)



# Aerial Map



Map Center: 45.003764, -94.242192



WHITETAIL PROPERTIES REAL ESTATE  
HUNTING | RANCH | FARM | TIMBER

Maps Provided By:



© AgriData, Inc. 2023 www.AgriDataInc.com

**30-118N-28W**  
**Wright County**  
**Minnesota**



5/23/2023

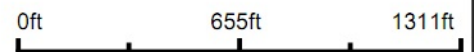
Field borders provided by Farm Service Agency as of 5/21/2008.



# Aerial Map



Map Center: 44.999750, -94.230575



WHITETAIL PROPERTIES REAL ESTATE  
HUNTING | RANCH | FARM | TIMBER

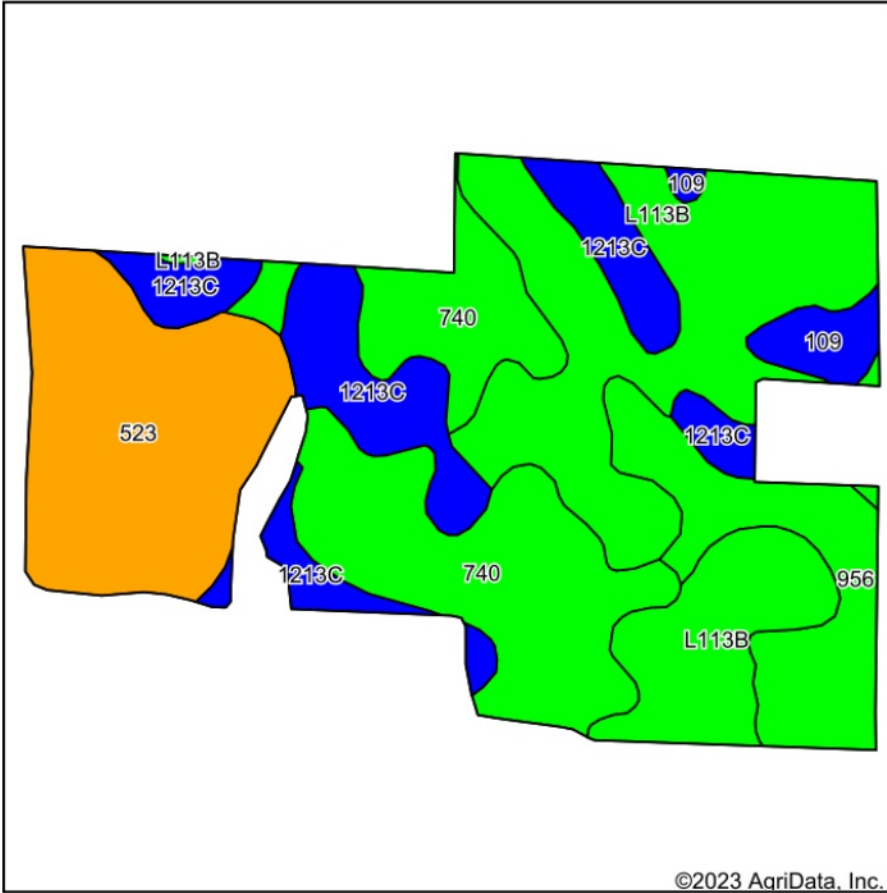
Maps Provided By:  
 **surety**  
CUSTOMIZED ONLINE MAPPING

© AgriData, Inc. 2023      www.AgriDataInc.com

**29-118N-28W**  
**Wright County**  
**Minnesota**

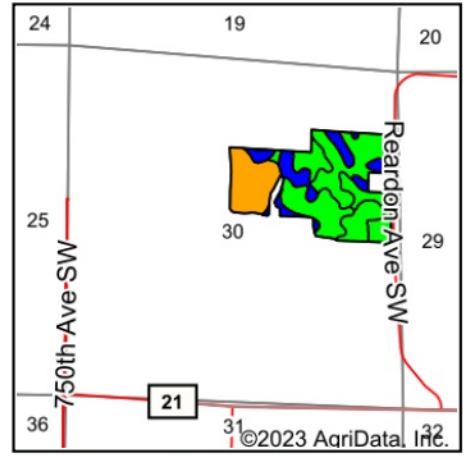


# Soils Map



©2023 AgriData, Inc.

Soils data provided by USDA and NRCS.



State: **Minnesota**  
 County: **Wright**  
 Location: **30-118N-28W**  
 Township: **Stockholm**  
 Acres: **70.13**  
 Date: **5/23/2023**



WHITETAIL PROPERTIES REAL ESTATE  
 HUNTING | RANCH | FARM | TIMBER

Maps Provided By:



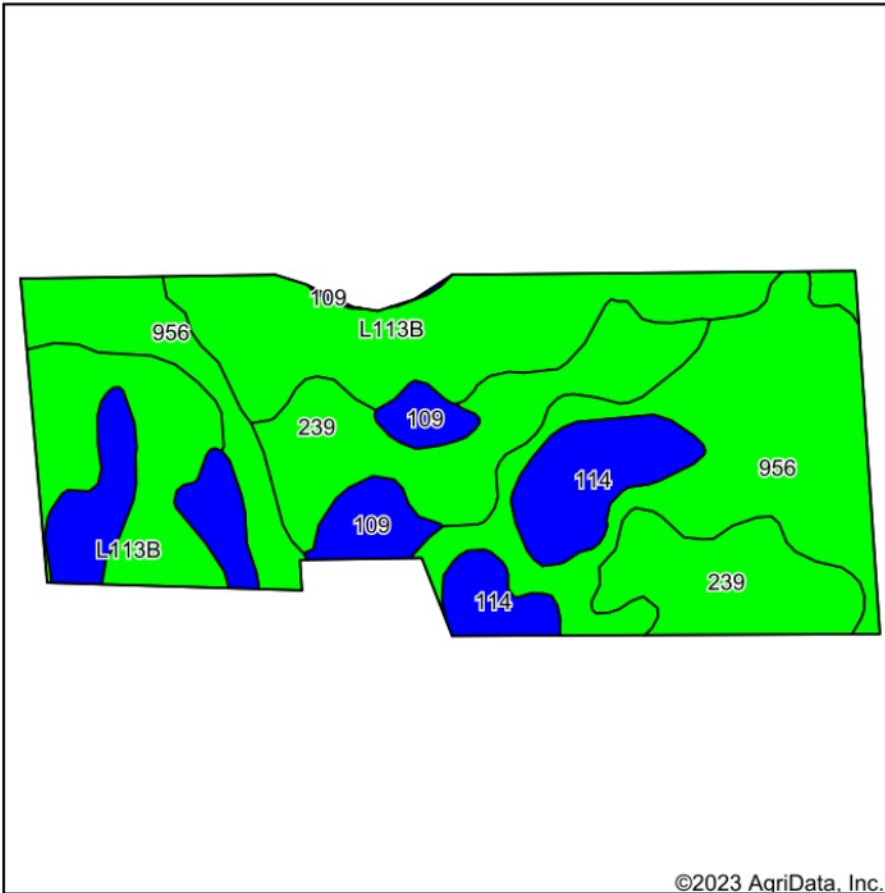
Area Symbol: MN171, Soil Area Version: 16

Code	Soil Description	Acres	Percent of field	PI Legend	Non-Irr Class *c	Productivity Index
L113B	Reedslake-Le Sueur complex, 1 to 6 percent slopes	21.54	30.7%		Ile	98
740	Hamel-Glencoe complex, 0 to 2 percent slopes	16.02	22.8%		IIw	93
523	Houghton muck, 0 to 1 percent slopes	13.41	19.1%		IIIw	74
1213C	Cokato-Storden complex, 6 to 12 percent slopes, eroded	10.27	14.6%		IIIe	84
956	Canisteo-Glencoe complex, 0 to 2 percent slopes	7.17	10.2%		IIw	91
109	Cordova clay loam, 0 to 2 percent slopes	1.72	2.5%		IIw	87
<b>Weighted Average</b>					<b>2.34</b>	<b>89.2</b>

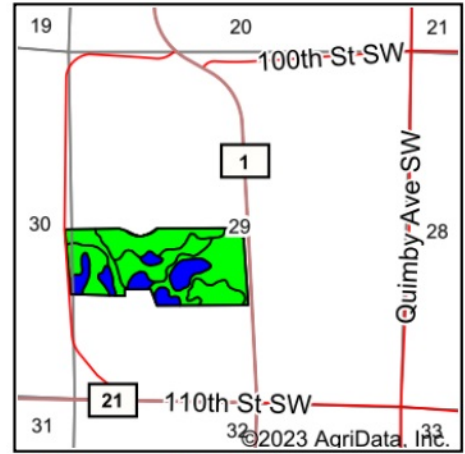
\*c: Using Capabilities Class Dominant Condition Aggregation Method



# Soils Map



Soils data provided by USDA and NRCS.



State: **Minnesota**  
 County: **Wright**  
 Location: **29-118N-28W**  
 Township: **Stockholm**  
 Acres: **62.85**  
 Date: **5/23/2023**



WHITETAIL PROPERTIES REAL ESTATE  
 HUNTING | RANCH | FARM | TIMBER

Maps Provided By:



Area Symbol: MN171, Soil Area Version: 16

Code	Soil Description	Acres	Percent of field	PI Legend	Non-Irr Class *c	Productivity Index
956	Canisteo-Glencoe complex, 0 to 2 percent slopes	19.12	30.4%		IIw	91
L113B	Reedslake-Le Sueur complex, 1 to 6 percent slopes	18.20	29.0%		Ile	98
239	Le Sueur loam, 1 to 3 percent slopes	13.75	21.9%		Iw	97
109	Cordova clay loam, 0 to 2 percent slopes	6.41	10.2%		IIw	87
114	Glencoe clay loam, 0 to 1 percent slopes	5.37	8.5%		IIIw	86
<b>Weighted Average</b>					<b>1.87</b>	<b>93.5</b>

\*c: Using Capabilities Class Dominant Condition Aggregation Method

Farm 3273

Tract 680

2022 Program Year

Map Created May 03, 2022

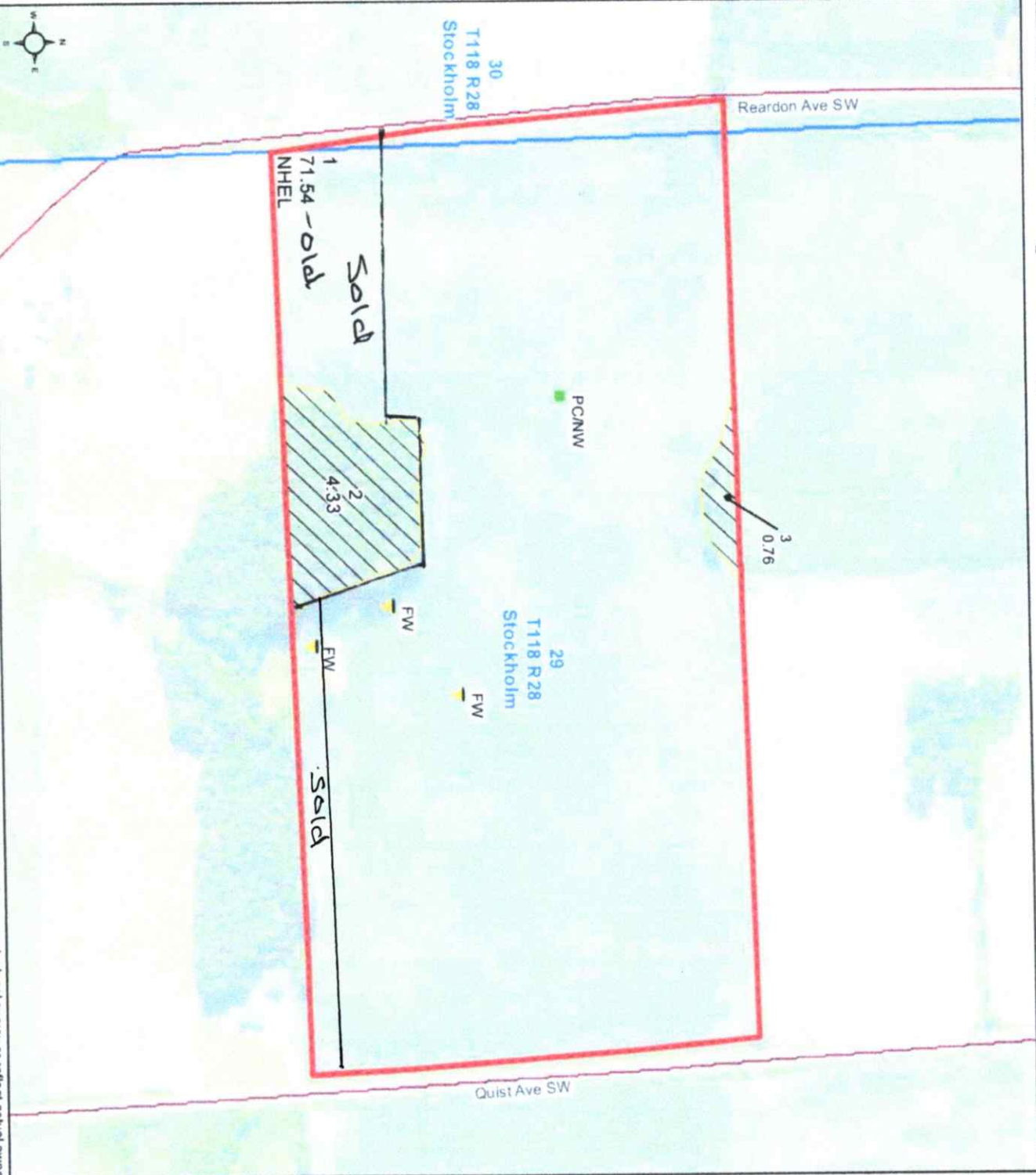


- Unless otherwise noted:  
 Shares are 100% operator  
 Crops are non-irrigated  
 Corn = yellow for grain  
 Soybeans = common soybeans for grain  
 Wheat = HRS, HRW = Grain  
 Sunflower = Oil, Non-Oil = Grain  
 Oats and Barley = Spring for grain  
 Rye = for grain  
 Peas = process  
 Alfalfa, Mixed Forage AGM, GMA, IGS = for forage  
 Beans = Dry Edible  
 MAG = for GZ  
 Canola = Spring for seed

- Common Land Unit**  
 / / Non-Cropland  
 Cropland  
 [Red Outline] Tract Boundary

- Wetland Determination Identifiers**  
 ● Restricted Use  
 ▲ Limited Restrictions  
 ■ Exempt from Conservation Compliance Provisions

Tract Cropland Total: 71.54 acres



United States Department of Agriculture (USDA) Farm Service Agency (FSA) maps are for FSA Program administration only. This map does not represent a legal survey or reflect actual ownership; rather it depicts the information provided directly from the producer and/or National Agricultural Imagery Program (NAIP) imagery. The producer accepts the data as is and assumes all risks associated with its use. USDA-FSA assumes no responsibility for actual or consequential damage incurred as a result of any user's reliance on this data outside FSA Programs. Wetland identifiers do not represent the size, shape, or specific determination of the area. Refer to your original determination (CPA-026 and attached maps) for exact boundaries and determinations or contact USDA Natural Resources Conservation Service (NRCS). This map displays the 2021 NAIP imagery.



# Farm 3273 Tract 670

2022 Program Year

Map Created May 03, 2022



- Unless otherwise noted:  
 Shares are 100% operator  
 Crops are non-irrigated  
 Corn = yellow for grain
- Soybeans = common soybeans for grain  
 Wheat = HRS, HRW = Grain  
 Sunflower = Oil, Non-Oil = Grain  
 Oats and Barley = Spring for grain  
 Rye = for grain  
 Peas = process  
 Alfalfa, Mixed Forage AGM, GMA, IGS = for forage  
 Beans = Dry Edible  
 NAG = for GZ  
 Canola = Spring for seed

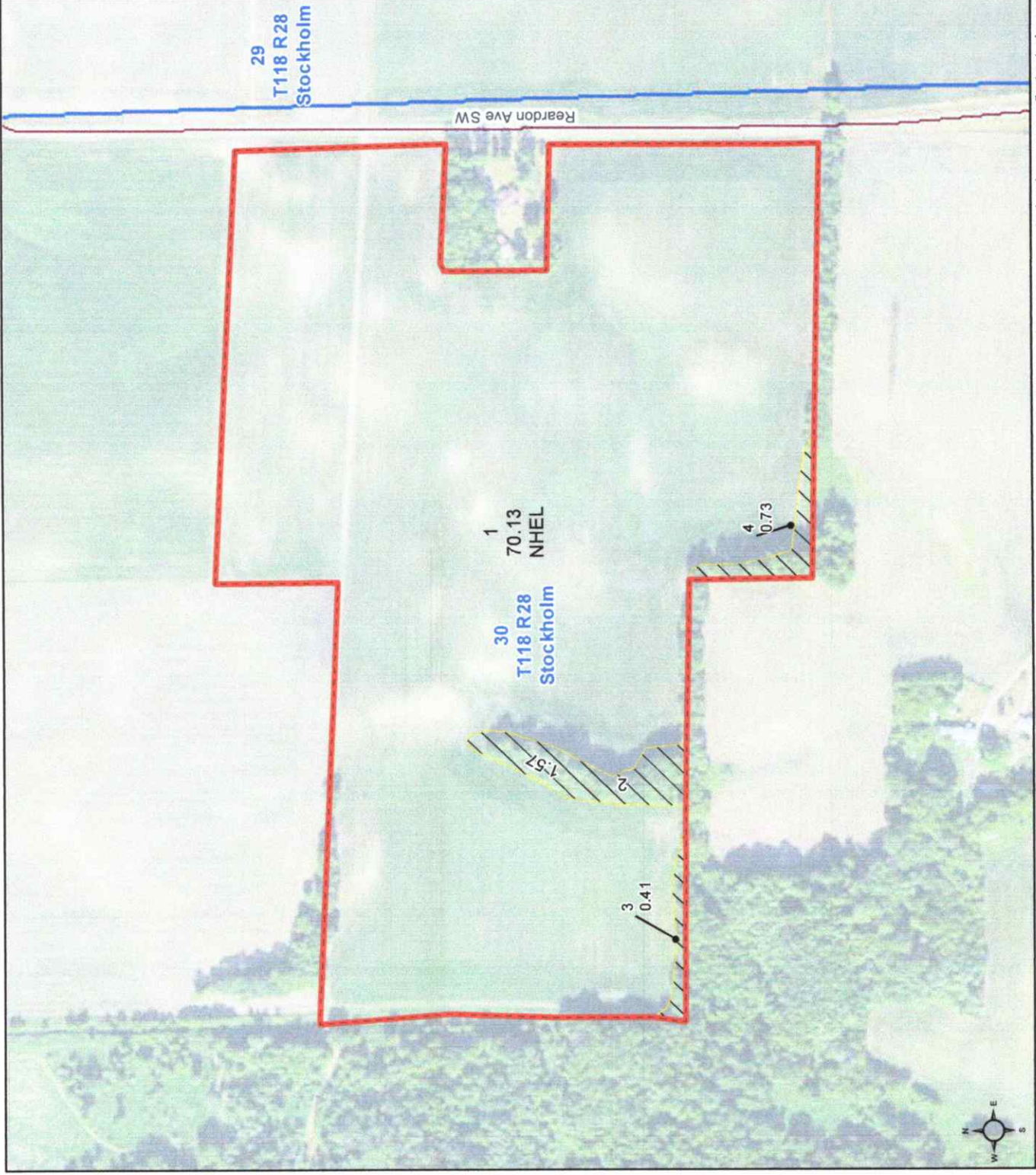
## Common Land Unit

- Non-Cropland
- Cropland
- Tract Boundary

## Wetland Determination Identifiers

- Restricted Use
- Limited Restrictions
- Exempt from Conservation
- Compliance Provisions

Tract Cropland Total: 70.13 acres



United States Department of Agriculture (USDA) Farm Service Agency (FSA) maps are for FSA Program administration only. This map does not represent a legal survey or reflect actual ownership; rather it depicts the information provided directly from the producer and/or National Agricultural Imagery Program (NAIP) imagery. The producer accepts the data 'as is' and assumes all risks associated with its use. USDA-FSA assumes no responsibility for actual or consequential damage incurred as a result of any user's reliance on this data outside FSA Programs. Wetland identifiers do not represent the size, shape, or specific determination of the area. Refer to your original determination (CPA-026 and attached maps) for exact boundaries and determinations or contact USDA Natural Resources Conservation Service (NRCS). This map displays the 2021 NAIP imagery.





# Certified Wetland Determination

10/13/2020

Customer:  
Tract: 670



Wright County - Stockholm Twp Sec 30

T118 R28 S30

1:4,800 1 inch = 400 feet

0 200 400 800



### Legend

-  PC/NW
-  FW
-  Sections



This certified wetland determination/delineation has been conducted for the purpose of implementing the wetland conservation provisions of the Food Security Act of 1985. This determination/delineation may not be valid for identifying the extent of the COE's Clean Water Act jurisdiction for this site. If you intend to conduct any activity that constitutes a discharge of dredged or fill material into wetlands or other waters, you should request a jurisdictional determination from the local office of the COE prior to starting the work.



Minnesota

U.S. Department of Agriculture

FARM: 3273

Wright

Farm Service Agency

Prepared: 2/9/23 1:12 PM

Report ID: FSA-156EZ

Abbreviated 156 Farm Record

Crop Year: 2022

Page: 2 of 3

DISCLAIMER: This is data extracted from the web farm database. Because of potential messaging failures in MIDAS, this data is not guaranteed to be an accurate and complete representation of data contained in the MIDAS system, which is the system of record for Farm Records.

Other Producers:

Tract Number: 680

Description STOC SEC29

FSA Physical Location : Wright, MN

ANSI Physical Location: Wright, MN

BIA Range Unit Number:

HEL Status: NHEL: no agricultural commodity planted on undetermined fields

Wetland Status: Tract contains a wetland or farmed wetland

WL Violations: None

Farmland	Cropland	DCP Cropland	WBP	WRP	EWP	CRP Cropland	GRP
76.63	71.54	71.54	0.0	0.0	0.0	0.0	0.0
State Conservation	Other Conservation	Effective DCP Cropland	Double Cropped	MPL/FWP	Native Sod		
0.0	0.0	71.54	0.0	0.0	0.0		

Crop	Base Acreage	PLC Yield	CCC-505 CRP Reduction
CORN	43.5	153	0.00
SOYBEANS	28.0	40	0.00
<b>Total Base Acres:</b>	<b>71.5</b>		

Owners: NYQUIST, JOEL V

Other Producers:

Tract Number: 8731 Description Sec 13 & 14 - Stockholm

FSA Physical Location : Wright, MN

ANSI Physical Location: Wright, MN

BIA Range Unit Number:

HEL Status: HEL: conservation system is being actively applied

Recon Number

Wetland Status: Tract contains a wetland or farmed wetland

2020- 3

WL Violations: None

Farmland	Cropland	DCP Cropland	WBP	WRP	EWP	CRP Cropland	GRP
232.7	154.45	154.45	0.0	0.0	0.0	0.0	0.0
State Conservation	Other Conservation	Effective DCP Cropland	Double Cropped	MPL/FWP	Native Sod		
0.0	0.0	154.45	0.0	0.0	0.0		

Crop	Base Acreage	PLC Yield	CCC-505 CRP Reduction
CORN	87.8	153	0.00
SOYBEANS	64.9	40	0.00
<b>Total Base Acres:</b>	<b>152.7</b>		

Owners: NYQUIST, JOEL V



Minnesota

U.S. Department of Agriculture

FARM: 3273

Wright

Farm Service Agency

Prepared: 2/9/23 1:12 PM

Report ID: FSA-156EZ

Abbreviated 156 Farm Record

Crop Year: 2022

Page: 1 of 3

DISCLAIMER: This is data extracted from the web farm database. Because of potential messaging failures in MIDAS, this data is not guaranteed to be an accurate and complete representation of data contained in the MIDAS system, which is the system of record for Farm Records.

Operator Name Farm Identifier

Farms Associated with Operator:

ARC/PLC G//F Eligibility: Eligible

CRP Contract Number(s): None

Farmland	Cropland	DCP Cropland	WBP	WRP	EWP	CRP Cropland	GRP	Farm Status	Number of Tracts
382.17	296.12	296.12	0.0	0.0	0.0	0.0	0.0	Active	3
State Conservation	Other Conservation	Effective DCP Cropland	Double Cropped	MPL/FWP	Native Sod				
0.0	0.0	296.12	0.0	0.0	0.0				

ARC/PLC

PLC	ARC-CO	ARC-IC	PLC-Default	ARC-CO-Default	ARC-IC-Default
NONE	CORN , SOYBN	NONE	NONE	NONE	NONE

Crop	Base Acreage	PLC Yield	CCC-505 CRP Reduction	HIP
CORN	173.5	153	0.00	0
SOYBEANS	120.8	40	0.00	0
<b>Total Base Acres:</b>	294.3			

Tract Number: 670 Description STOC SEC30

FSA Physical Location : Wright, MN ANSI Physical Location: Wright, MN

BIA Range Unit Number:

HEL Status: NHEL: no agricultural commodity planted on undetermined fields

Wetland Status: Tract does not contain a wetland

WL Violations: None

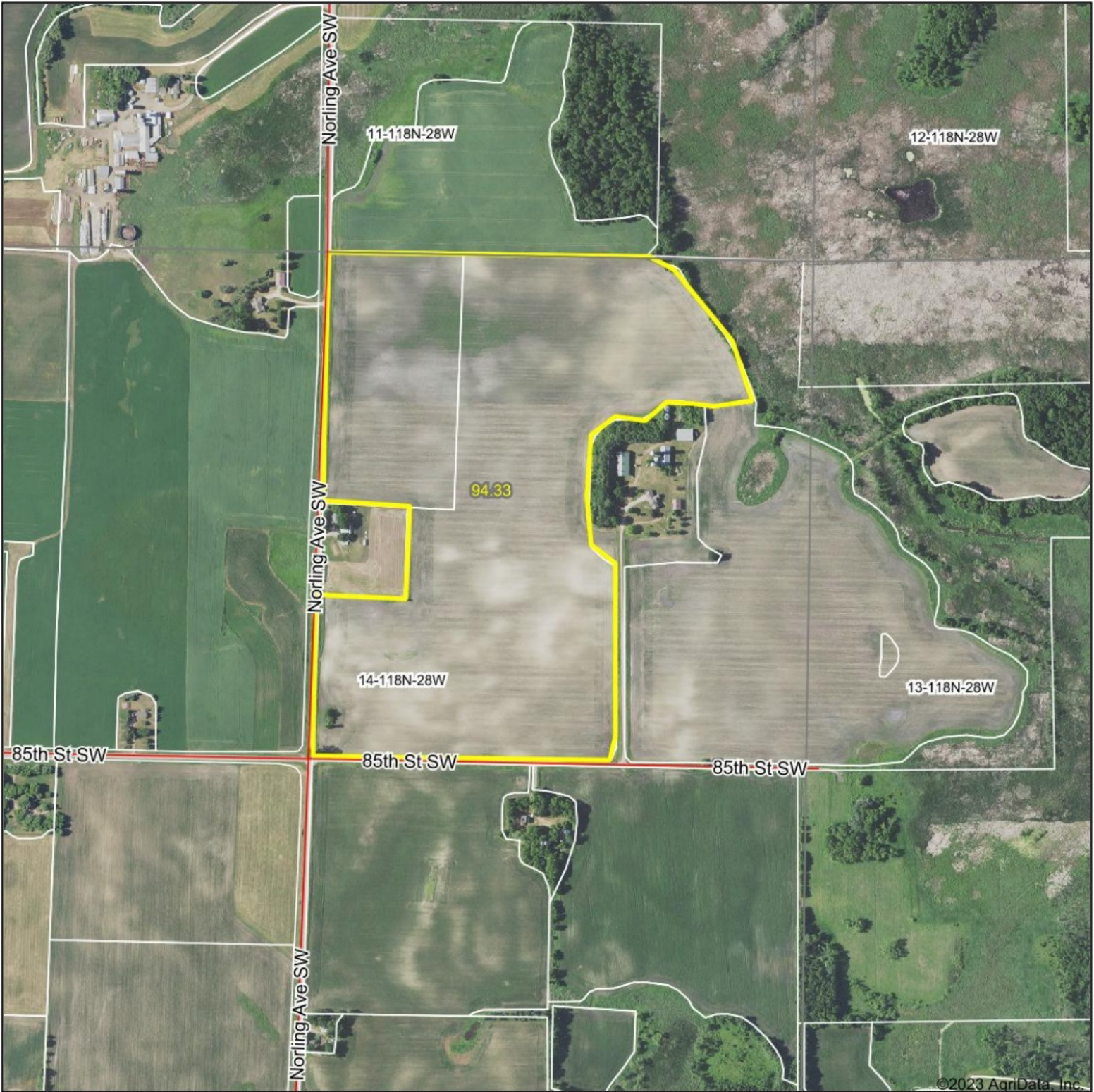
Farmland	Cropland	DCP Cropland	WBP	WRP	EWP	CRP Cropland	GRP
72.84	70.13	70.13	0.0	0.0	0.0	0.0	0.0
State Conservation	Other Conservation	Effective DCP Cropland	Double Cropped	MPL/FWP	Native Sod		
0.0	0.0	70.13	0.0	0.0	0.0		

Crop	Base Acreage	PLC Yield	CCC-505 CRP Reduction
CORN	42.2	153	0.00
SOYBEANS	27.9	40	0.00
<b>Total Base Acres:</b>	70.1		

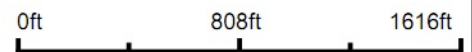
Owners: NYQUIST, JOEL V



# Aerial Map



Map Center: 45.031863, -94.159976



WHITETAIL PROPERTIES REAL ESTATE  
HUNTING | RANCH | FARM | TIMBER

Maps Provided By:



© AgriData, Inc. 2023 www.AgriDataInc.com

14-118N-28W  
Wright County  
Minnesota

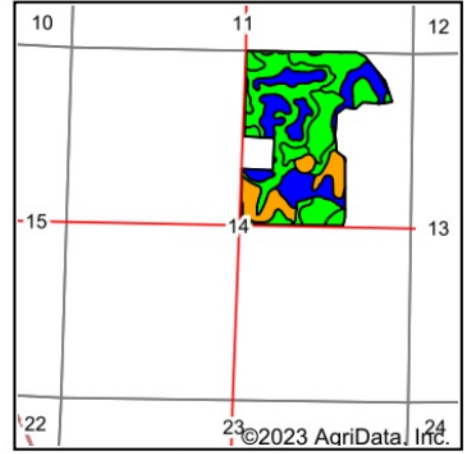
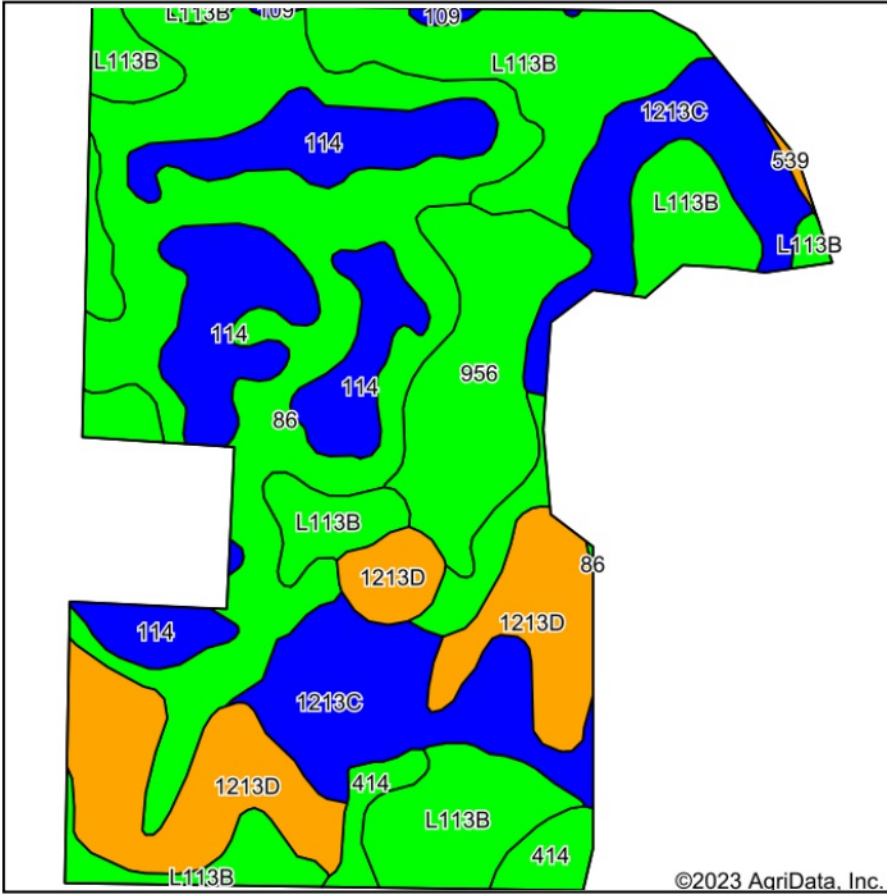


5/23/2023

Field borders provided by Farm Service Agency as of 5/21/2008.



# Soils Map



State: **Minnesota**  
 County: **Wright**  
 Location: **14-118N-28W**  
 Township: **Stockholm**  
 Acres: **94.33**  
 Date: **5/23/2023**



WHITETAIL PROPERTIES REAL ESTATE  
 HUNTING | RANCH | FARM | TIMBER

Maps Provided By:



Soils data provided by USDA and NRCS.

Area Symbol: MN171, Soil Area Version: 16

Code	Soil Description	Acres	Percent of field	PI Legend	Non-Irr Class *c	Productivity Index
86	Canisteo clay loam, 0 to 2 percent slopes	22.78	24.1%		IIw	93
L113B	Reedslake-Le Sueur complex, 1 to 6 percent slopes	22.67	24.0%		Ile	98
1213C	Cokato-Storden complex, 6 to 12 percent slopes, eroded	13.06	13.8%		IIIe	84
114	Glencoe clay loam, 0 to 1 percent slopes	12.68	13.4%		IIIw	86
1213D	Cokato-Storden complex, 12 to 18 percent slopes, eroded	12.64	13.4%		IVe	71
956	Canisteo-Glencoe complex, 0 to 2 percent slopes	7.81	8.3%		IIw	91
414	Hamel loam, 0 to 2 percent slopes	2.25	2.4%		IIw	94
109	Cordova clay loam, 0 to 2 percent slopes	0.29	0.3%		IIw	87
539	Klossner muck, 0 to 1 percent slopes	0.15	0.2%		IIIw	77
<b>Weighted Average</b>					<b>2.54</b>	<b>88.9</b>

\*c: Using Capabilities Class Dominant Condition Aggregation Method



# Farm 3273

## Tract 8731

2022 Program Year

Map Created May 04, 2022

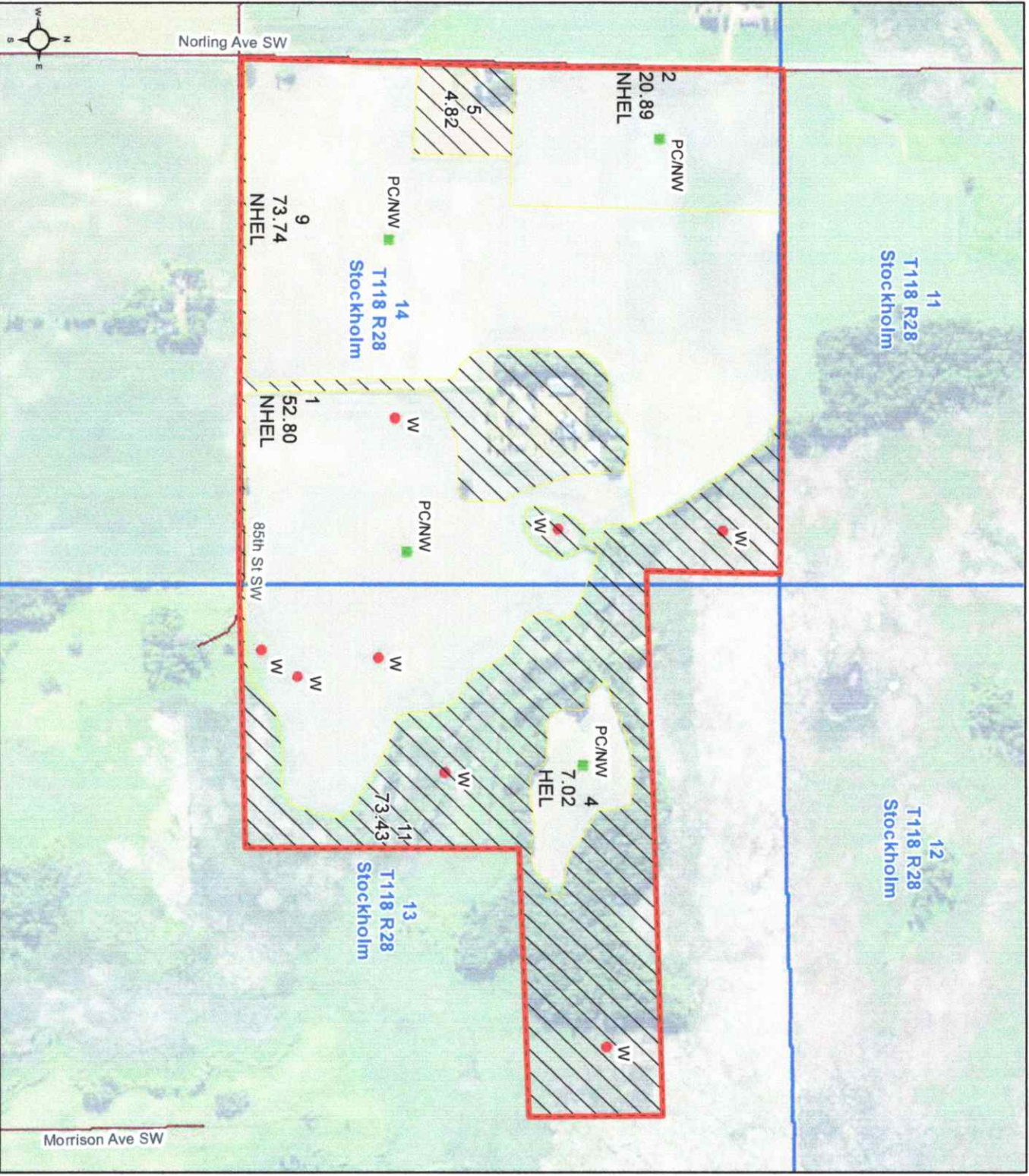


- Unless otherwise noted:  
 Shares are 100% operator  
 Crops are non-irrigated  
 Corn = yellow for grain  
 Soybeans = common soybeans for grain  
 Wheat = HRS, HRW = Grain  
 Sunflower = Oil, Non-Oil = Grain  
 Oats and Barley = Spring for grain  
 Rye = for grain  
 Peas = process  
 Alfalfa, Mixed Forage AGM, GMA, IGS = for forage  
 Beans = Dry Edible  
 MAG = for GZ  
 Canola = Spring for seed

- Common Land Unit**
-  Non-Cropland
  -  Cropland
  -  Tract Boundary

- Wetland Determination Identifiers**
-  Restricted Use
  -  Limited Restrictions
  -  Exempt from Conservation
  -  Compliance Provisions

Tract Cropland Total: 154.45 acres



United States Department of Agriculture (USDA) Farm Service Agency (FSA) maps are for FSA Program administration only. This map does not represent a legal survey or reflect actual ownership, rather it depicts the information provided directly from the producer and/or National Agricultural Imagery Program (NAIP) imagery. The producer accepts the data 'as is' and assumes all risks associated with its use. USDA-FSA assumes no responsibility for actual or consequential damage incurred as a result of any user's reliance on this data outside FSA Programs. Wetland identifiers do not represent the size, shape, or specific determination of the area. Refer to your original determination (CPA-026 and attached maps) for exact boundaries and determinations or contact USDA Natural Resources Conservation Service (NRCS). This map displays the 2021 NAIP imagery.



Minnesota

U.S. Department of Agriculture

FARM: 3273

Wright

Farm Service Agency

Prepared: 2/9/23 1:12 PM

Report ID: FSA-156EZ

Abbreviated 156 Farm Record

Crop Year: 2022

Page: 2 of 3

DISCLAIMER: This is data extracted from the web farm database. Because of potential messaging failures in MIDAS, this data is not guaranteed to be an accurate and complete representation of data contained in the MIDAS system, which is the system of record for Farm Records.

Other Producers:

Tract Number: 680 Description STOC SEC29

FSA Physical Location: Wright, MN

ANSI Physical Location: Wright, MN

BIA Range Unit Number:

HEL Status: NHEL: no agricultural commodity planted on undetermined fields

Wetland Status: Tract contains a wetland or farmed wetland

WL Violations: None

Farmland	Cropland	DCP Cropland	WBP	WRP	EWP	CRP Cropland	GRP
76.63	71.54	71.54	0.0	0.0	0.0	0.0	0.0

State Conservation	Other Conservation	Effective DCP Cropland	Double Cropped	MPL/FWP	Native Sod
0.0	0.0	71.54	0.0	0.0	0.0

Crop	Base Acreage	PLC Yield	CCC-505 CRP Reduction
CORN	43.5	153	0.00
SOYBEANS	28.0	40	0.00
<b>Total Base Acres:</b>	<b>71.5</b>		

Owners: NYQUIST, JOEL V

Other Producers:

Tract Number: 8731 Description Sec 13 & 14 - Stockholm

FSA Physical Location: Wright, MN

ANSI Physical Location: Wright, MN

BIA Range Unit Number:

HEL Status: HEL: conservation system is being actively applied

Recon Number

Wetland Status: Tract contains a wetland or farmed wetland

2020 - 3

WL Violations: None

Farmland	Cropland	DCP Cropland	WBP	WRP	EWP	CRP Cropland	GRP
232.7	154.45	154.45	0.0	0.0	0.0	0.0	0.0

State Conservation	Other Conservation	Effective DCP Cropland	Double Cropped	MPL/FWP	Native Sod
0.0	0.0	154.45	0.0	0.0	0.0

Crop	Base Acreage	PLC Yield	CCC-505 CRP Reduction
CORN	87.8	153	0.00
SOYBEANS	64.9	40	0.00
<b>Total Base Acres:</b>	<b>152.7</b>		

Owners: NYQUIST, JOEL V