

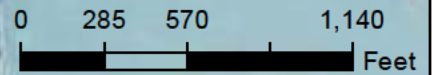
# FSA INFO PACKET



A DIVISION OF WHITETAIL  
PROPERTIES REAL ESTATE, LLC

[RANCHANDFARMAUCTIONS.COM](http://RANCHANDFARMAUCTIONS.COM)





Legend	
	Tract Boundary
	Non-Cropland
	Cropland
	CRP

Wetland Determination Identifiers	
	Restricted Use
	Limited Restrictions
	Exempt from Conservation Compliance Provisions

2024 Program Year  
Map Created February 10, 2024

**Farm 578**  
**Tract 688**

Tract Cropland Total: 66.00 acres

IL151\_T688

United States Department of Agriculture (USDA) Farm Service Agency (FSA) maps are for FSA Program administration only. This map does not represent a legal survey or reflect actual ownership; rather it depicts the information provided directly from the producer and/or National Agricultural Imagery Program (NAIP) imagery. The producer accepts the data 'as is' and assumes all risks associated with its use. USDA-FSA assumes no responsibility for actual or consequential damage incurred as a result of any user's reliance on this data outside FSA Programs. Wetland identifiers do not represent the size, shape, or specific determination of the area. Refer to your original determination (CPA-026 and attached maps) for exact boundaries and determinations or contact USDA Natural Resources Conservation Service (NRCS).

**Abbreviated 156 Farm Record**

See Page 3 for non-discriminatory Statements.

Operator Name : ██████████  
CRP Contract Number(s) : None  
Recon ID : None  
Transferred From : None  
ARCPLC G/F Eligibility : Eligible

**Farm Land Data**

Farmland	Cropland	DCP Cropland	WBP	EWP	WRP	GRP	Sugarcane	Farm Status	Number Of Tracts
██████	██████	██████	████	████	████	████	████	██████	1
██████████	██████████	██████████████████		██████████		████	████	██████████	████
████	████	██████		████		████	████	████	████

**Crop Election Choice**

ARC Individual	ARC County	Price Loss Coverage
None	SOYBN	CORN, SORGH

**DCP Crop Data**

Crop Name	Base Acres	CCC-505 CRP Reduction Acres	PLC Yield	HIP
████	████	████	████	
██████████	████	████	████	
██████████	████	████	████	
██████	██████	████		

**NOTES**

**Tract Number : 688**

Description : E10 S5&S6-T14-R6  
FSA Physical Location : ILLINOIS/POPE  
ANSI Physical Location : ILLINOIS/POPE  
BIA Unit Range Number :  
HEL Status : NHEL: No agricultural commodity planted on undetermined fields  
Wetland Status : Wetland determinations not complete  
WL Violations : None  
Owners : BARBARA BELL, JOAN K LESTER, GLORIA BROWN  
Other Producers : None  
Recon ID : None

**Tract Land Data**

Farm Land	Cropland	DCP Cropland	WBP	EWP	WRP	GRP	Sugarcane
84.08	66.00	66.00	0.00	0.00	0.00	0.00	0.0

**Abbreviated 156 Farm Record**

**Tract 688 Continued ...**

State Conservation	Other Conservation	Effective DCP Cropland	Double Cropped	CRP	MPL	DCP Ag. Rel Activity	SOD
0.00	0.00	66.00	0.00	0.00	0.00	0.00	0.00

**DCP Crop Data**

Crop Name	Base Acres	CCC-505 CRP Reduction Acres	PLC Yield
Corn	32.90	0.00	133
Grain Sorghum	8.00	0.00	68
Soybeans	25.10	0.00	36
<b>TOTAL</b>	<b>66.00</b>	<b>0.00</b>	

**NOTES**

**Tract Number : 857**

██████████	██████████
██████████	██████████
██████████	██████████
██████████	██████████
██████████	████████████████████████████████████████
██████████	████████████████████████████████
██████████	██████████
██████████	████████████████████████████████████████
██████████	██████████
██████████	██████████

██████████	██████████	██████████	██████████	██████████	██████████	██████████	██████████
██████████	██████████	██████████	██████████	██████████	██████████	██████████	██████████
██████████	██████████	████████████████████████████████████████	████████████████████████████████████████	██████████	██████████	████████████████████████████████████████	██████████
██████████	██████████	██████████	██████████	██████████	██████████	██████████	██████████

██████████	██████████	████████████████████████████████████████	██████████
██████████	██████████	██████████	██████████
██████████	██████████	██████████	██████████
██████████	██████████	██████████	██████████
██████████	██████████	██████████	██████████

**NOTES**

**Abbreviated 156 Farm Record**

---

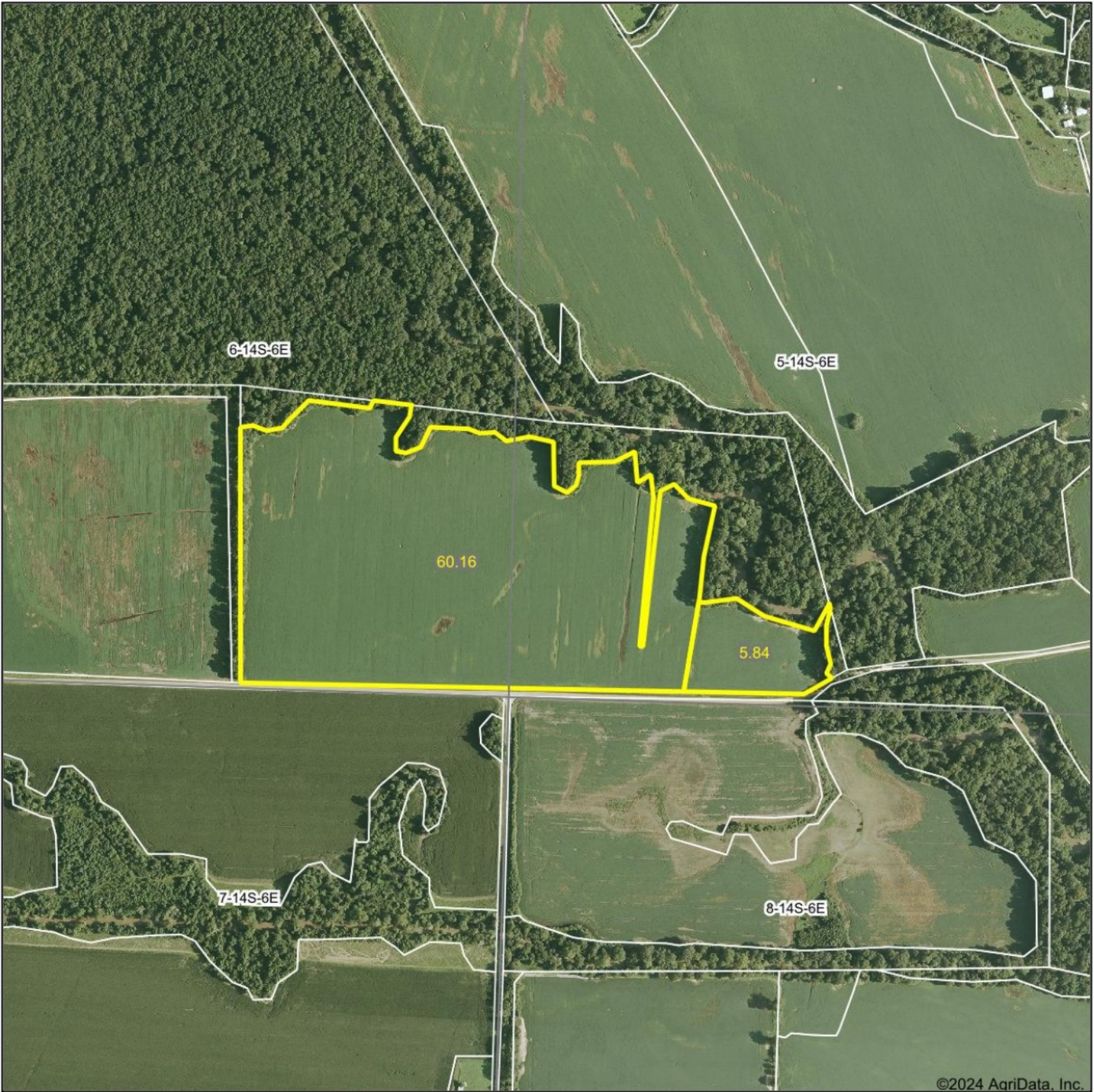
*In accordance with Federal civil rights law and U.S. Department of Agriculture (USDA) civil rights regulations and policies, the USDA, its Agencies, offices, and employees, and institutions participating in or administering USDA programs are prohibited from discriminating based on race, color, national origin, religion, sex, gender identity (including gender expression), sexual orientation, disability, age, marital status, family/parental status, income derived from a public assistance program, political beliefs, or reprisal or retaliation for prior civil rights activity, in any program or activity conducted or funded by USDA (not all bases apply to all programs). Remedies and complaint filing deadlines vary by program or incident.*

*Persons with disabilities who require alternative means of communication for program information (e.g., Braille, large print, audiotape, American Sign Language, etc.) should contact the responsible Agency or USDA's TARGET Center at (202) 720-2600 (voice and TTY) or contact USDA through the Federal Relay Service at (800) 877-8339. Additionally, program information may be made available in languages other than English.*

*To file a program discrimination complaint, complete the USDA Program Discrimination Complaint Form, AD-3027, found online at [http://www.ascr.usda.gov/complaint\\_filing\\_cust.html](http://www.ascr.usda.gov/complaint_filing_cust.html) and at any USDA office or write a letter addressed to USDA and provide in the letter all of the information requested in the form. To request a copy of the complaint form, call (866) 632-9992. Submit your completed form or letter to USDA by: (1) mail: U.S. Department of Agriculture Office of the Assistant Secretary for Civil Rights 1400 Independence Avenue, SW Washington, D.C. 20250-9410; (2) fax: (202) 690-7442; or (3) e-mail: [program.intake@usda.gov](mailto:program.intake@usda.gov). USDA is an equal opportunity provider, employer, and lender.*



# Aerial Map



©2024 AgriData, Inc.

Boundary Center: 37.322969, -88.583288



WHITETAIL PROPERTIES REAL ESTATE  
HUNTING | RANCH | FARM | TIMBER

Maps Provided By:



© AgriData, Inc. 2023 www.AgriDataInc.com

**5-14S-6E**  
**Pope County**  
**Illinois**

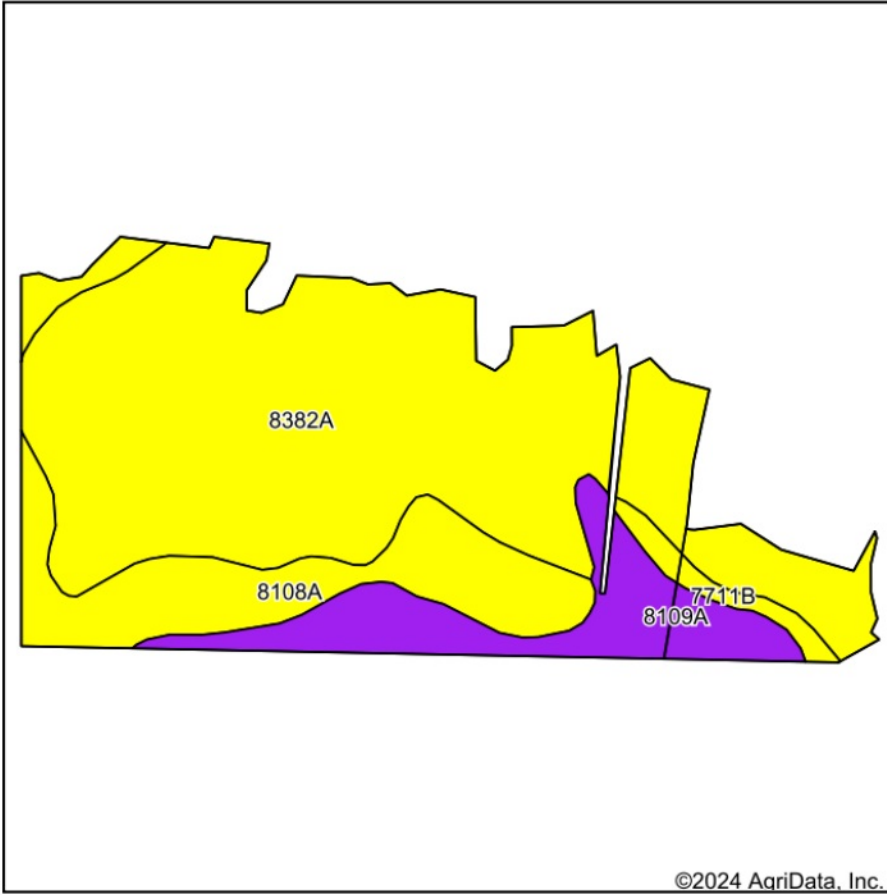


3/6/2024

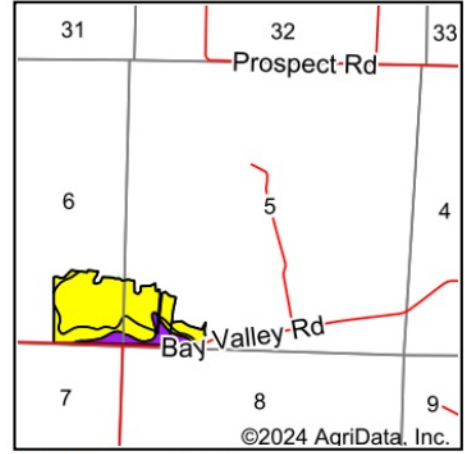
Field borders provided by Farm Service Agency as of 5/21/2008.



# Soils Map



Soils data provided by USDA and NRCS.



State: **Illinois**  
 County: **Pope**  
 Location: **5-14S-6E**  
 Township: **Webster No. 5**  
 Acres: **66**  
 Date: **3/6/2024**



WHITETAIL PROPERTIES REAL ESTATE  
 HUNTING | RANCH | FARM | TIMBER

Maps Provided By:



Area Symbol: IL151, Soil Area Version: 16

Code	Soil Description	Acres	Percent of field	Il. State Productivity Index Legend	*Corn Bu/A	*Soybeans Bu/A	*Crop productivity index for optimum management
8382A	Belknap silt loam, 0 to 2 percent slopes, occasionally flooded	44.31	67.1%	Yellow	156	52	117
8108A	Bonnie silt loam, 0 to 2 percent slopes, occasionally flooded	11.90	18.0%	Light Purple	149	49	111
8109A	Raccoon silt loam, 0 to 2 percent slopes, occasionally flooded	8.38	12.7%	Dark Purple	144	46	106
**7711B	Hatfield silt loam, 2 to 5 percent slopes, rarely flooded	1.41	2.1%	Yellow	**145	**48	**111
<b>Weighted Average</b>					<b>153</b>	<b>50.6</b>	<b>114.4</b>

**Table: Optimum Crop Productivity Ratings for Illinois Soil EFOTG are sourced from Bulletin 811 calculated Map Unit Base Yield Indices, and adjusted (Adj) for slope, erosion, and surface texture.** Publication Date: 02-08-2023

Crop yields and productivity (B811 EFOTG) are maintained at the following USDA web site: 2023 Illinois Soil Productivity and Yield Indices: <https://efotg.sc.egov.usda.gov/#/state/IL/documents/section=2&folder=52809>

\* The flood/pond factor has been removed for B811 indexes and yields.

\*\* Base indexes from Bulletin 811 adjusted for slope, erosion, and surface texture according to the Il. Soils EFOTG