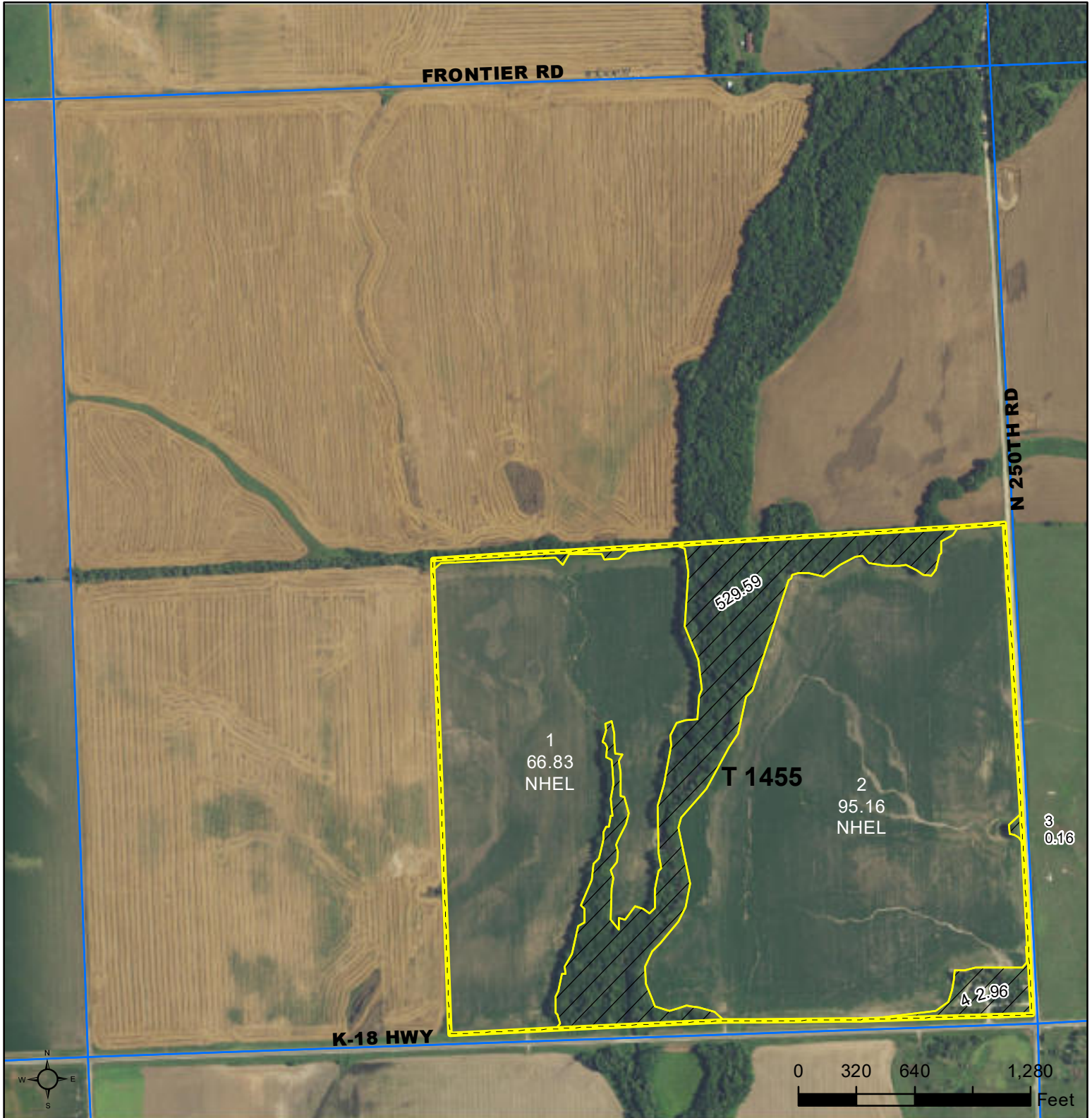


**FSA INFO PACKET**  
**TRACT 1-OTTAWA, KS 192.2**



**RANCHANDFARMAUCTIONS.COM**



**Common Land Unit**

- Tract Boundary
- PLSS
- Non-Cropland
- Cropland

**Wetland Determination Identifiers**

- Restricted Use
- Limited Restrictions
- Exempt from Conservation Compliance Provisions

Unless noted on field:

- |                             |                                |
|-----------------------------|--------------------------------|
| 1/ All Wheat HRW, NI, GR    | 6/ Grass SMO, NI, FG           |
| 2/ All Sorghum GRS, NI, GR  | 7/ Alfalfa, NI, FG             |
| 3/ All Corn YEL, NI GR      | 8/ Sorghum Forage Cane, NI, FG |
| 4/ All Soybeans COM, NI, GR | 9/ Cotton, NI, GR              |
| 5/ Grass NAG, NI, GZ        |                                |

**Tract Cropland Total: 161.99 acres**

**2023 Program Year**  
Map Created November 04, 2022

**Farm 5377**  
**Tract 1455**

**6-12-1**  
Displayed over 2021 NAIP

Kansas  
Ottawa

U.S. Department of Agriculture  
Farm Service Agency

**FARM: 5377**  
Prepared: 2/8/23 7:42 AM  
Crop Year: 2023  
Page: 1 of 2

Report ID: FSA-156EZ

**Abbreviated 156 Farm Record**

DISCLAIMER: This is data extracted from the web farm database. Because of potential messaging failures in MIDAS, this data is not guaranteed to be an accurate and complete representation of data contained in the MIDAS system, which is the system of record for Farm Records.

<b>Operator Name</b>	<b>Farm Identifier</b>	<b>Recon Number</b>
WAGNER, WILLIAM JAY	2008 div farm 4716	2008 - 68

**Farms Associated with Operator:**  
3150, 3496, 3503, 4183, 5921, 5926, 6123, 6260, 6473, 6718, 6833, 6877, 7049, 7066, 7172

ARC/PLC G//F Eligibility: Eligible

CRP Contract Number(s): None

Farmland	Cropland	DCP Cropland	WBP	WRP	EWP	CRP Cropland	GRP	Farm Status	Number of Tracts
194.7	161.99	161.99	0.0	0.0	0.0	0.0	0.0	Active	1
State Conservation	Other Conservation	Effective DCP Cropland	Double Cropped	MPL/FWP					
0.0	0.0	161.99	0.0	0.0					

ARC/PLC						
PLC	ARC-CO	ARC-IC	PLC-Default	ARC-CO-Default	ARC-IC-Default	
NONE	WHEAT, SORGH, SOYBN	NONE	NONE	NONE	NONE	NONE

Crop	Base Acreage	PLC Yield	CCC-505 CRP Reduction	HIP
WHEAT	87.1	54	0.00	0
GRAIN SORGHUM	34.1	66	0.00	0
SOYBEANS	3.5	32	0.00	0
<b>Total Base Acres:</b>	124.7			

**Tract Number:** 1455      **Description** SE4, & 33ac SW4 6-12-1  
**FSA Physical Location :** Ottawa, KS      **ANSI Physical Location:** Ottawa, KS  
**BIA Range Unit Number:**  
**HEL Status:** NHEL: no agricultural commodity planted on undetermined fields  
**Wetland Status:** Wetland determinations not complete  
**WL Violations:** None

Farmland	Cropland	DCP Cropland	WBP	WRP	EWP	CRP Cropland	GRP
194.7	161.99	161.99	0.0	0.0	0.0	0.0	0.0
State Conservation	Other Conservation	Effective DCP Cropland	Double Cropped	MPL/FWP			
0.0	0.0	161.99	0.0	0.0			

Crop	Base Acreage	PLC Yield	CCC-505 CRP Reduction
WHEAT	87.1	54	0.00
GRAIN SORGHUM	34.1	66	0.00

Kansas  
Ottawa

U.S. Department of Agriculture  
Farm Service Agency

**FARM: 5377**  
**Prepared:** 2/8/23 7:42 AM  
**Crop Year:** 2023  
**Page:** 2 of 2

Report ID: FSA-156EZ

**Abbreviated 156 Farm Record**

DISCLAIMER: This is data extracted from the web farm database. Because of potential messaging failures in MIDAS, this data is not guaranteed to be an accurate and complete representation of data contained in the MIDAS system, which is the system of record for Farm Records.

---

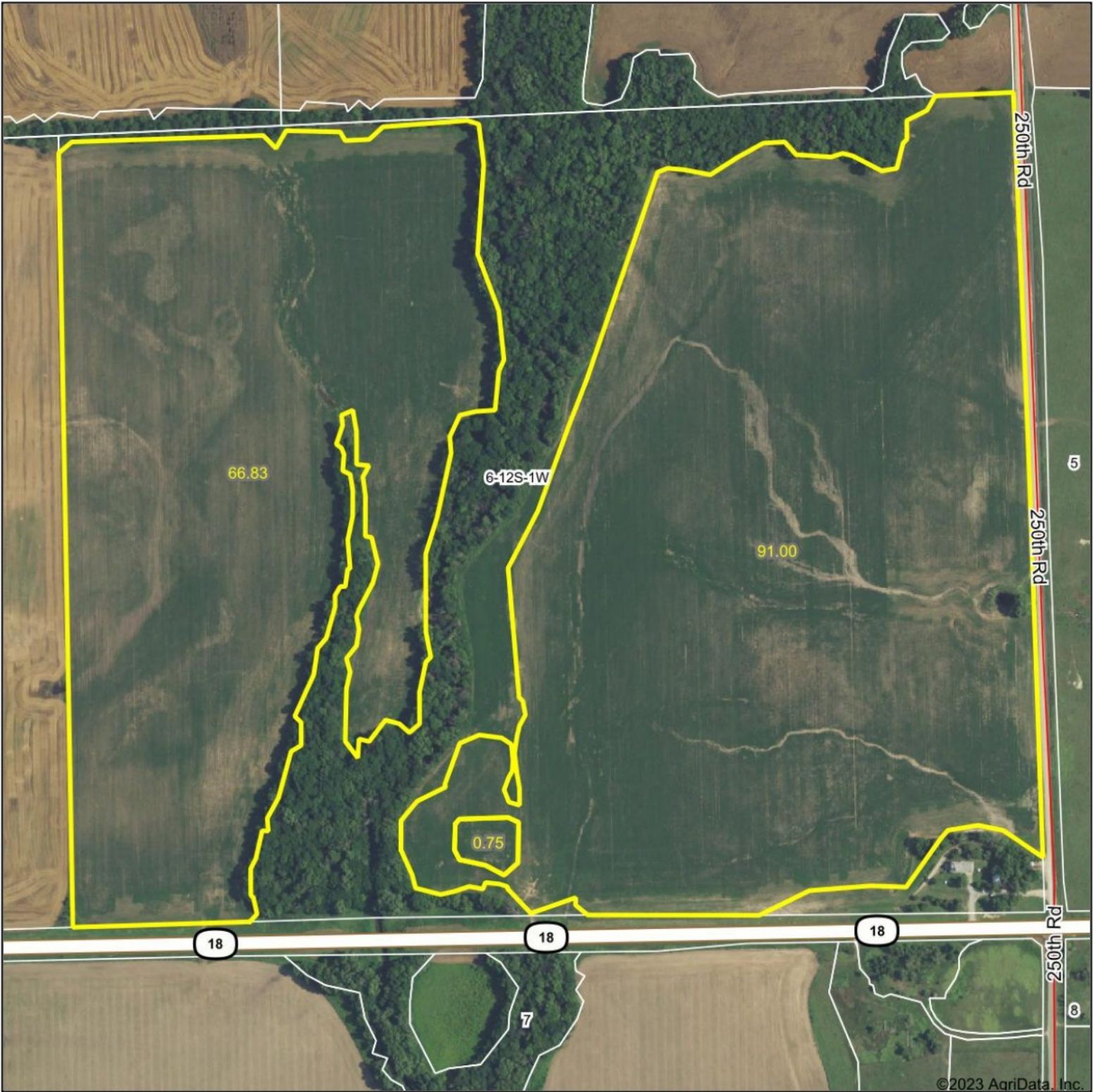
Crop	Base Acreage	PLC Yield	CCC-505 CRP Reduction
SOYBEANS	3.5	32	0.00
<b>Total Base Acres:</b>	124.7		

**Owners:** ALLIANCE MANAGEMENT SERVICES LLC

**Other Producers:** None

---

# Aerial Map



Map Center: 39.034249, -97.469841



WHITETAIL PROPERTIES REAL ESTATE  
HUNTING | RANCH | FARM | TIMBER

Maps Provided By



© AgriData, Inc. 2021 www.AgriDataInc.com

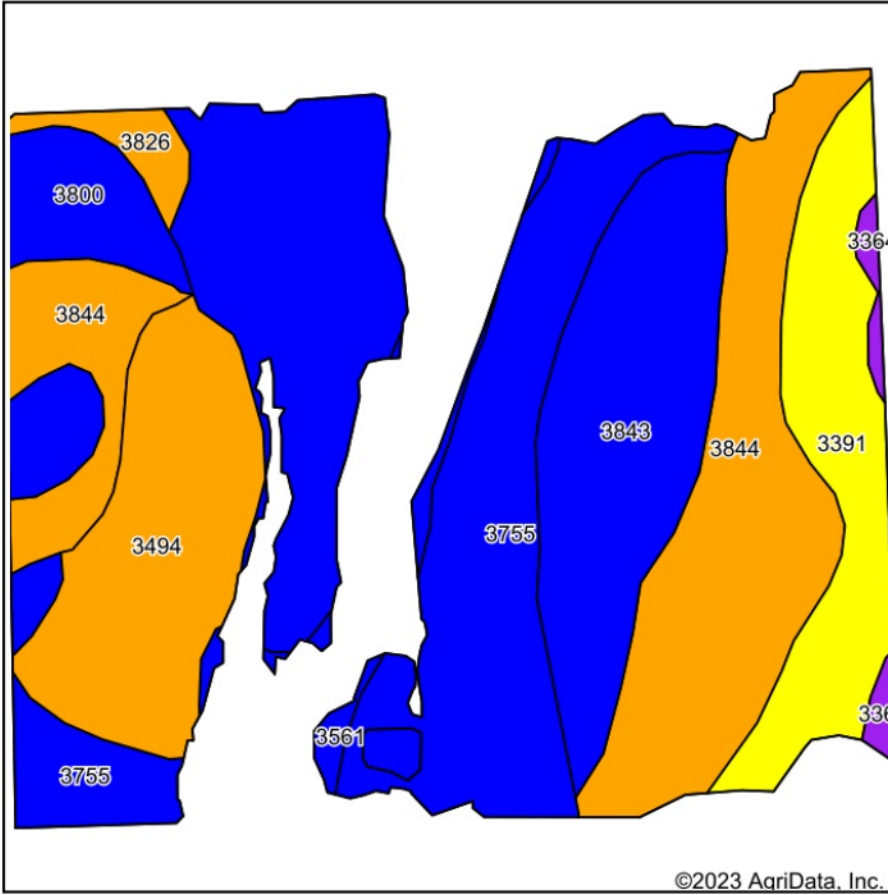
6-12S-1W  
Ottawa County  
Kansas



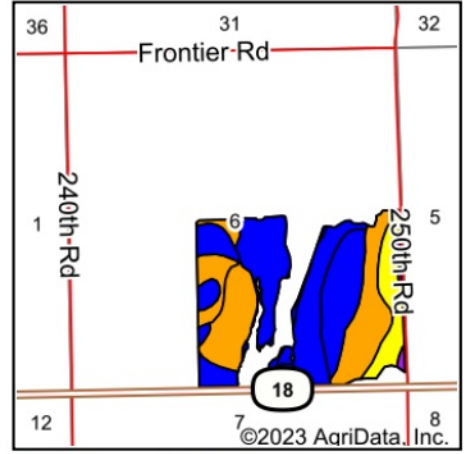
2/15/2023

Field borders provided by Farm Service Agency as of 5/21/2008.

# Soils Map



Soils data provided by USDA and NRCS.



State: **Kansas**  
 County: **Ottawa**  
 Location: **6-12S-1W**  
 Township: **Lincoln**  
 Acres: **158.58**  
 Date: **2/15/2023**



WHITETAIL PROPERTIES REAL ESTATE  
 HUNTING | RANCH | FARM | TIMBER

Maps Provided By



© AgriData, Inc. 2021

www.AgriDataInc.com

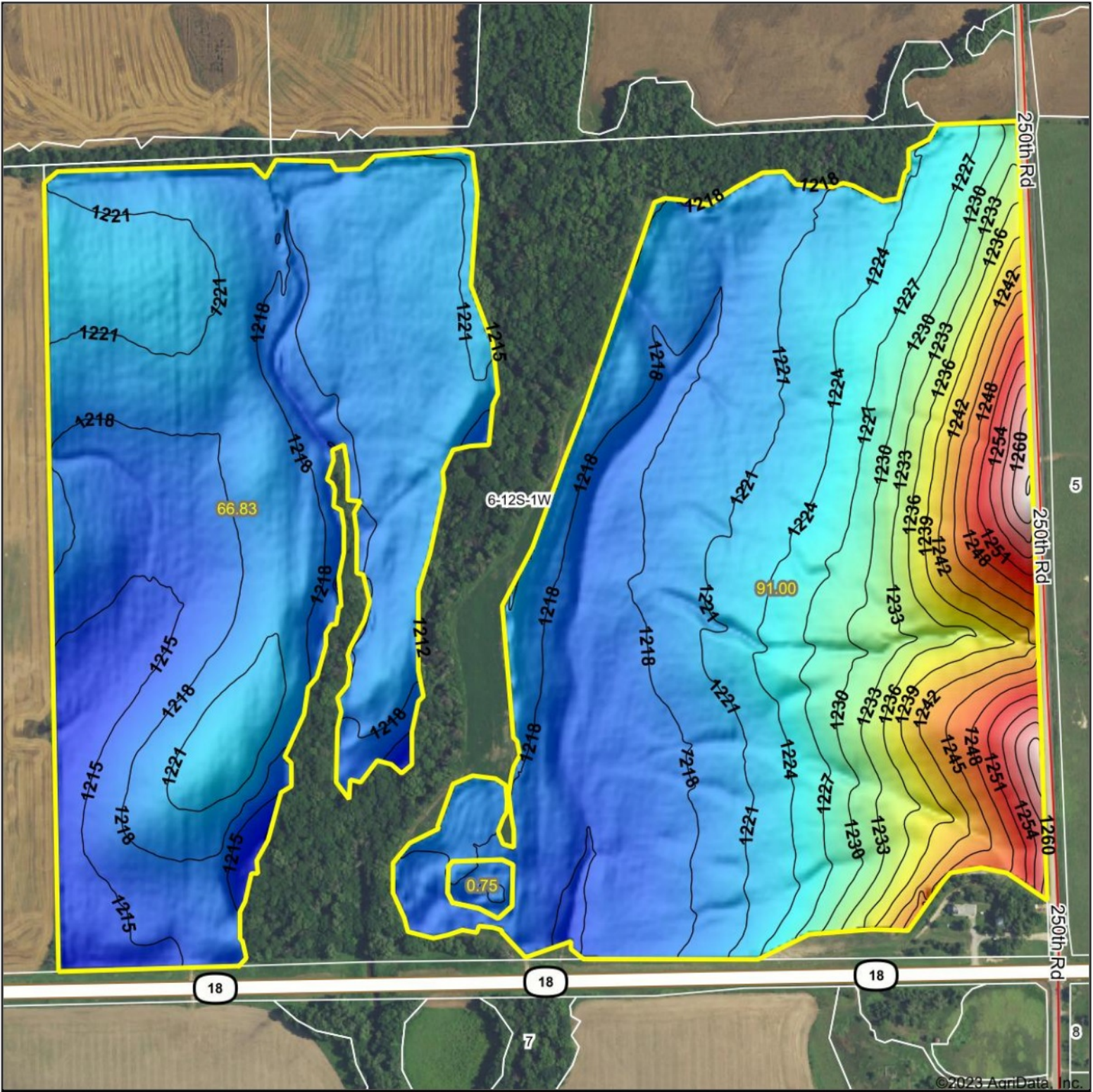


Area Symbol: KS143, Soil Area Version: 20

Code	Soil Description	Acres	Percent of field	Non-Irr Class Legend	Non-Irr Class *c	Irr Class *c
3755	Hord silt loam, rarely flooded	52.14	32.9%		IIc	I
3844	Geary silt loam, 3 to 7 percent slopes	32.60	20.6%		IIIe	IIIe
3843	Geary silt loam, 1 to 3 percent slopes	22.18	14.0%		Ile	Ile
3494	Wells sandy loam, 3 to 7 percent slopes	19.73	12.4%		IIIe	IIIe
3391	Lancaster loam, 3 to 7 percent slopes	15.90	10.0%		IVe	IVe
3800	Crete silt loam, 0 to 1 percent slopes, loess plains and breaks	9.97	6.3%		IIs	IIs
3826	Crete silt loam, 3 to 7 percent slopes	2.28	1.4%		IIIe	IIIe
3561	Hobbs silt loam, occasionally flooded	2.22	1.4%		IIw	IIw
3364	Edalgo-Hedville complex, 5 to 30 percent slopes	1.56	1.0%		VIe	VIe
<b>Weighted Average</b>					<b>2.58</b>	<b>2.26</b>

\*c: Using Capabilities Class Dominant Condition Aggregation Method

# Topography Hillshade



<p>Low Elevation High</p>	<p>Source: USGS 3 meter dem              Interval(ft): 3              Min: 1,212.0              Max: 1,263.1              Range: 51.1              Average: 1,223.0              Standard Deviation: 8.96 ft</p>	<p>0ft 504ft 1009ft</p> <p>                   2/15/2023                  6-12S-1W                  Ottawa County                  Kansas                  map center:39.034249, -97.469841             </p>
---------------------------	--	---

WHITETAIL PROPERTIES REAL ESTATE  
 HUNTING & RANCHES PARK | TIMBER  
 Maps Provided By:  
  
 CUSTOMIZED ONLINE MAPPING  
 © AgriData, Inc. 2021 www.AgriDataInc.com  
 Field borders provided by Farm Service Agency as of 5/21/2008.