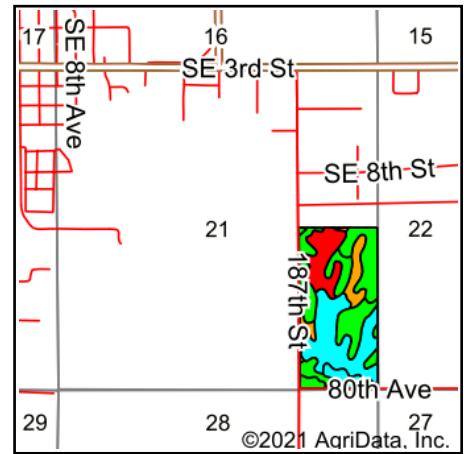
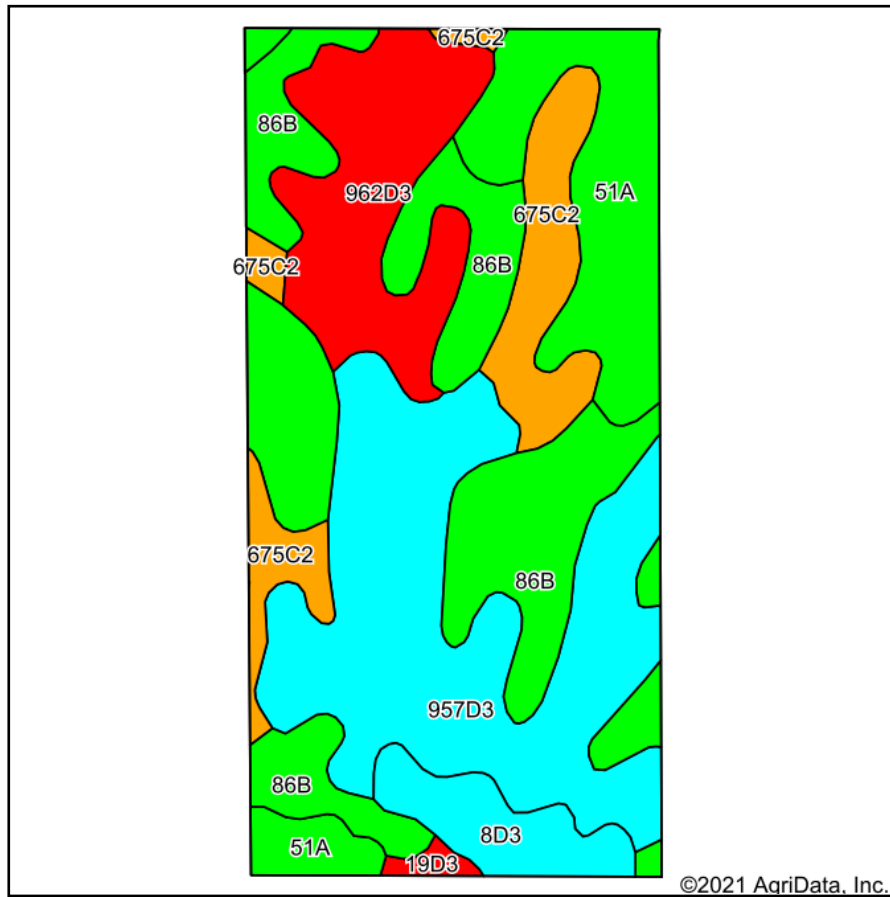


Soils Map



State: **Illinois**
 County: **Mercer**
 Location: **21-14N-3W**
 Township: **Mercer**
 Acres: **79.41**
 Date: **8/25/2021**



WHITETAIL PROPERTIES REAL ESTATE
 HUNTING | RANCH | FARM | TIMBER

Maps Provided By:



Area Symbol: IL131, Soil Area Version: 16

Code	Soil Description	Acres	Percent of field	Il. State Productivity Index Legend	Subsoil rooting ^a	Corn Bu/A	Soybeans Bu/A	Wheat Bu/A	Crop productivity index for optimum management
**957D3	Elco-Atlas silty clay loams, 10 to 18 percent slopes, severely eroded	23.29	29.3%		UNF	**95	**32	**37	**71
**86B	Osco silt loam, 2 to 5 percent slopes	17.61	22.2%		FAV	**189	**59	**74	**140
51A	Muscatune silt loam, 0 to 2 percent slopes	15.30	19.3%		FAV	200	64	75	147
**962D3	Sylvan-Bold complex, 10 to 18 percent slopes, severely eroded	10.92	13.8%		FAV	**124	**38	**48	**89
**675C2	Greenbush silt loam, 5 to 10 percent slopes, eroded	7.92	10.0%		FAV	**171	**54	**65	**125
**8D3	Hickory clay loam, 10 to 18 percent slopes, severely eroded	3.87	4.9%		FAV	**98	**33	**40	**75
**19D3	Sylvan silty clay loam, 10 to 18 percent slopes, severely eroded	0.50	0.6%		FAV	**122	**40	**49	**90
Weighted Average						148	47.3	57.1	109.1

Table: Optimum Crop Productivity Ratings for Illinois Soil by K.R. Olson and J.M. Lang, Office of Research, ACES, University of Illinois at Champaign-Urbana. Version: 1/2/2012 Amended Table S2 B811

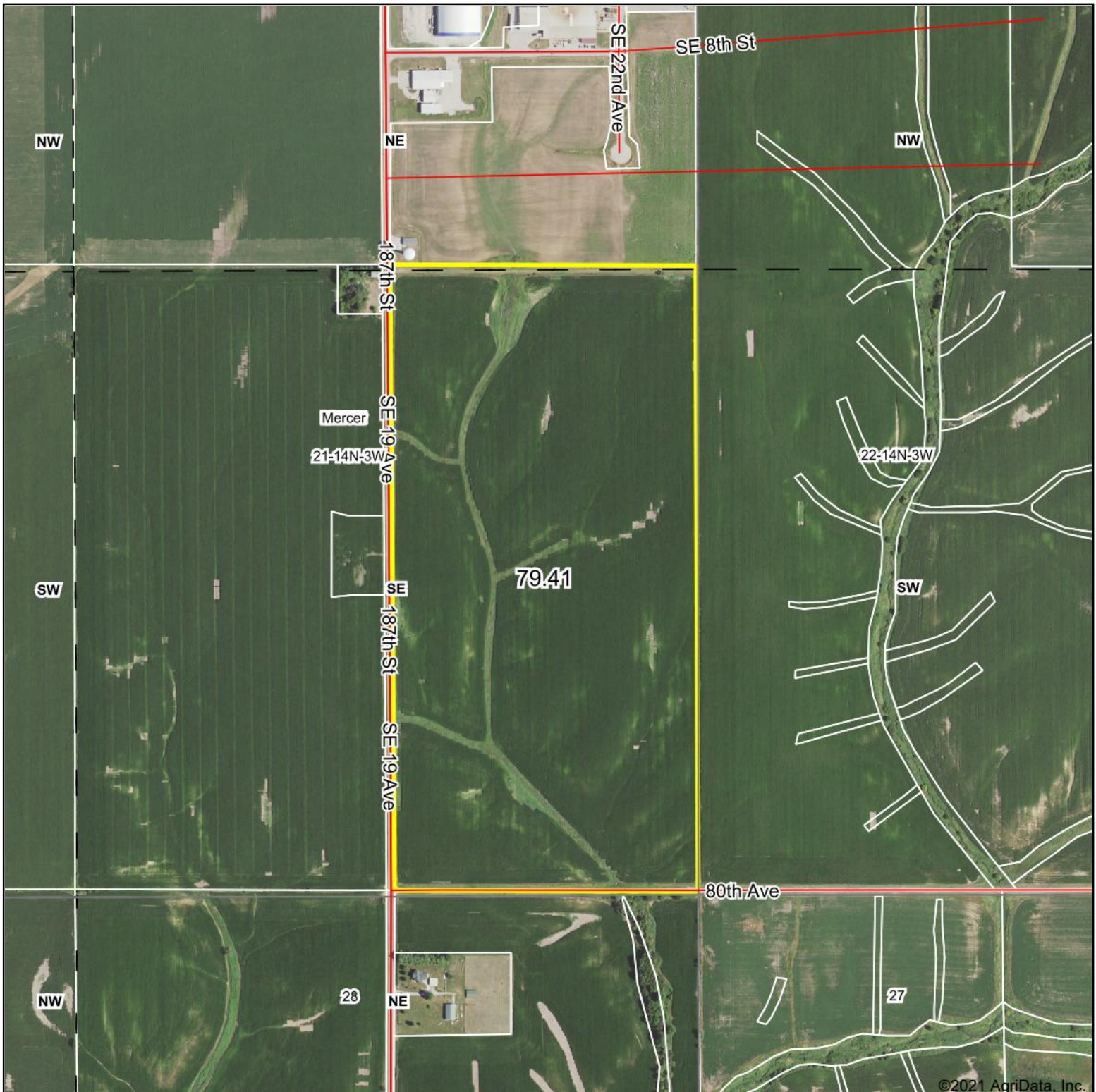
Crop yields and productivity indices for optimum management (B811) are maintained at the following NRES web site: <http://soilproductivity.nres.illinois.edu/>

** Indexes adjusted for slope and erosion according to Bulletin 811 Table S3

^a UNF = unfavorable; FAV = favorable

Soils data provided by USDA and NRCS. Soils data provided by University of Illinois at Champaign-Urbana.

Aerial Map



WHITETAIL PROPERTIES REAL ESTATE

HUNTING | RANCH | FARM | TIMBER

Maps Provided By:



© AgriData, Inc. 2021

www.AgriDataInc.com

Map Center: 41° 11.3316', -90° 43.5442'

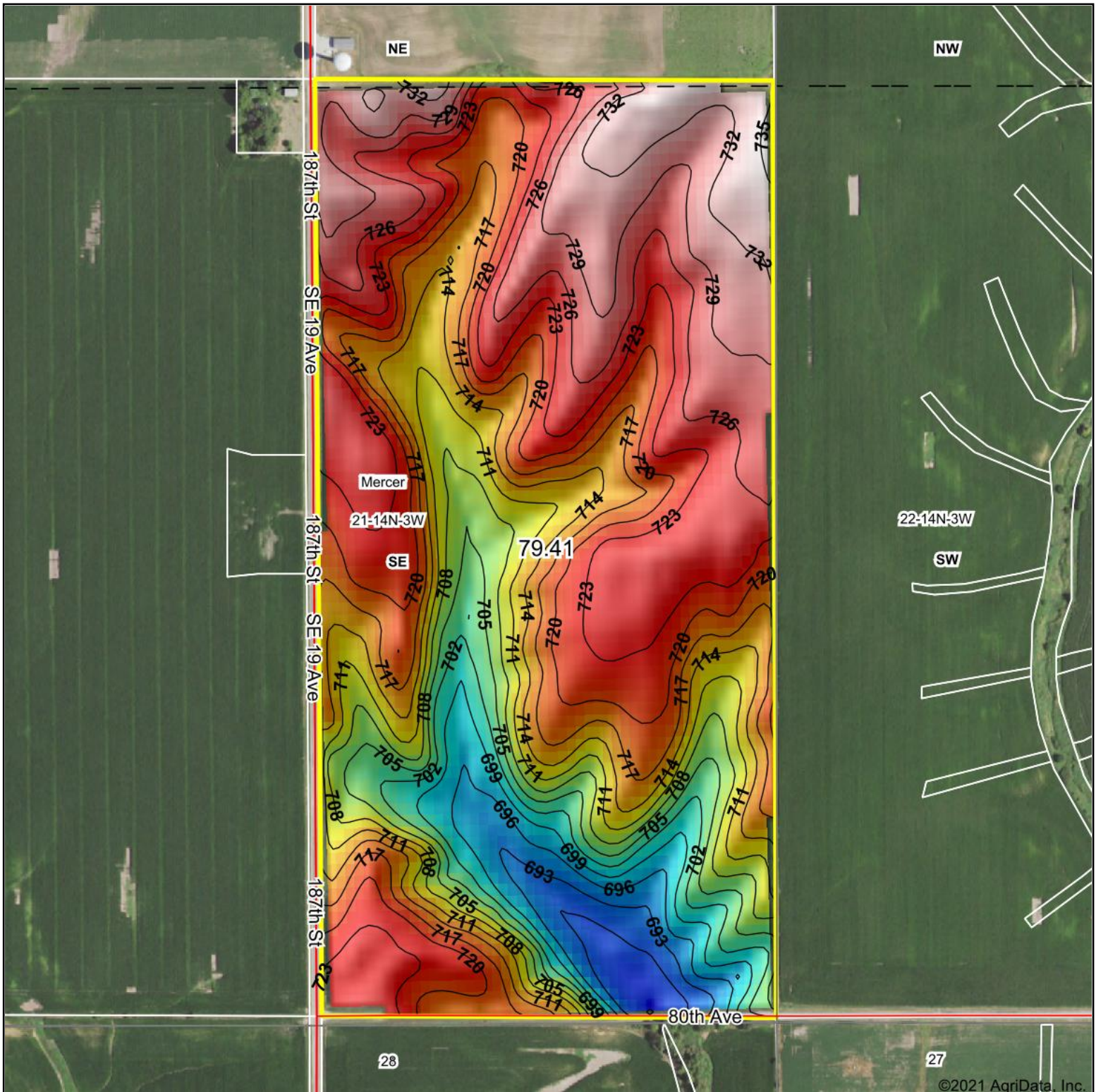
0ft 663ft 1325ft

21-14N-3W
Mercer County
Illinois



8/25/2021

Field borders provided by Farm Service Agency as of 5/21/2008.



©2021 AgriData, Inc.

Low Elevation High



Source: USGS 10 meter dem

Interval(ft): 3

Min: 685.7

Max: 735.1

Range: 49.4

Average: 716.3

Standard Deviation: 10.99 ft

0ft 442ft 885ft



8/25/2021

21-14N-3W
Mercer County
Illinois

map center: 41° 11.3316', -90° 43.5442'



WHITETAIL PROPERTIES REAL ESTATE

HUNTING | RANCH | FARM | TIMBER

Maps Provided By:



© AgriData, Inc. 2021

www.AgriDataInc.com

Field borders provided by Farm Service Agency as of 5/21/2008.