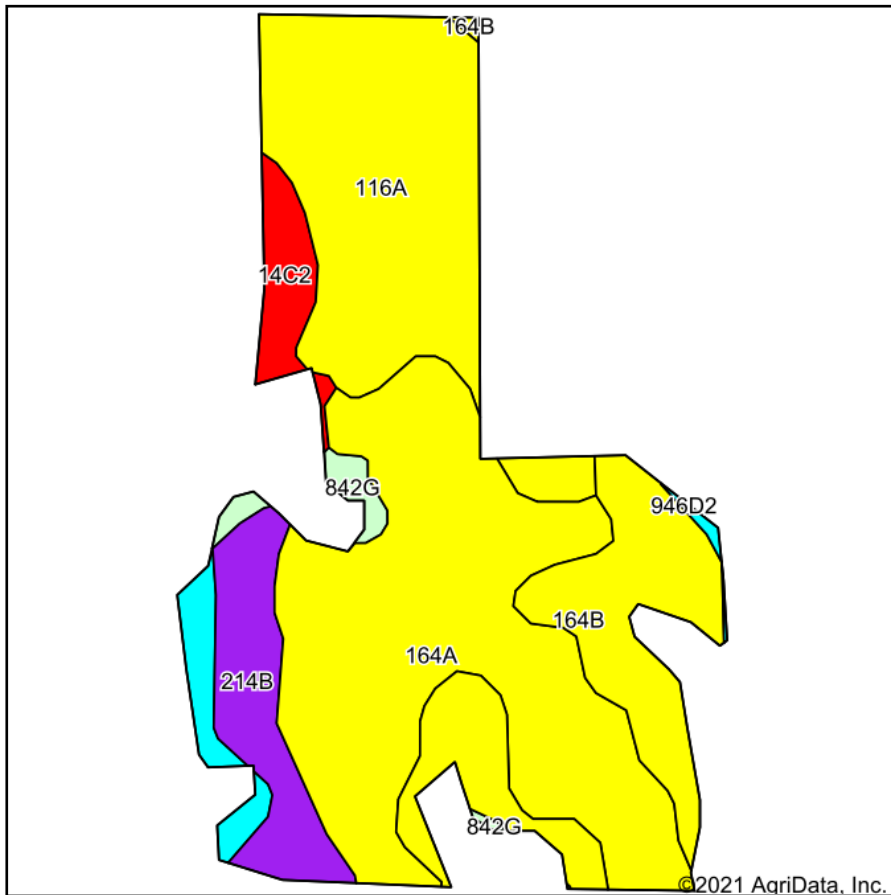
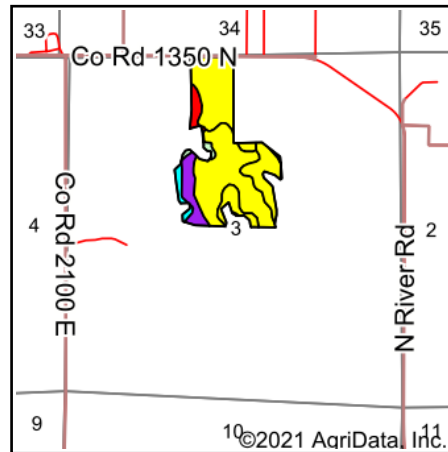


# Soils Map



Soils data provided by USDA and NRCS.



State: **Illinois**  
 County: **Clark**  
 Location: **3-10N-11W**  
 Township: **Darwin**  
 Acres: **58.66**  
 Date: **9/1/2021**



WHITETAIL PROPERTIES REAL ESTATE  
 HUNTING | RANCH | FARM | TIMBER

Maps Provided By:



Area Symbol: IL023, Soil Area Version: 15

Code	Soil Description	Acres	Percent of field	Il. State Productivity Index Legend	Subsoil rooting <sup>a</sup>	Corn Bu/A	Soybeans Bu/A	Wheat Bu/A	Crop productivity index for optimum management
164A	Stoy silt loam, 0 to 2 percent slopes	23.42	39.9%		FAV	145	47	58	109
116A	Whitson silt loam, 0 to 2 percent slopes	15.24	26.0%		FAV	158	50	60	116
**164B	Stoy silt loam, 2 to 5 percent slopes	10.26	17.5%		FAV	**144	**47	**57	**108
**214B	Hosmer silt loam, 2 to 5 percent slopes	4.89	8.3%		UNF	**139	**46	**57	**104
**14C2	Ava silt loam, 5 to 10 percent slopes, eroded	2.11	3.6%		UNF	**122	**40	**50	**90
**946D2	Hickory-Atlas silt loams, 10 to 18 percent slopes, eroded	1.83	3.1%		UNF	**100	**34	**40	**76
842G	Hickory-Rock outcrop complex, 35 to 60 percent slopes	0.91	1.6%						
<b>Weighted Average</b>						<b>143.2</b>	<b>46.3</b>	<b>56.5</b>	<b>106.8</b>

**Table: Optimum Crop Productivity Ratings for Illinois Soil by K.R. Olson and J.M. Lang, Office of Research, ACES, University of Illinois at Champaign-Urbana.** Version: 1/2/2012 Amended Table S2 B811

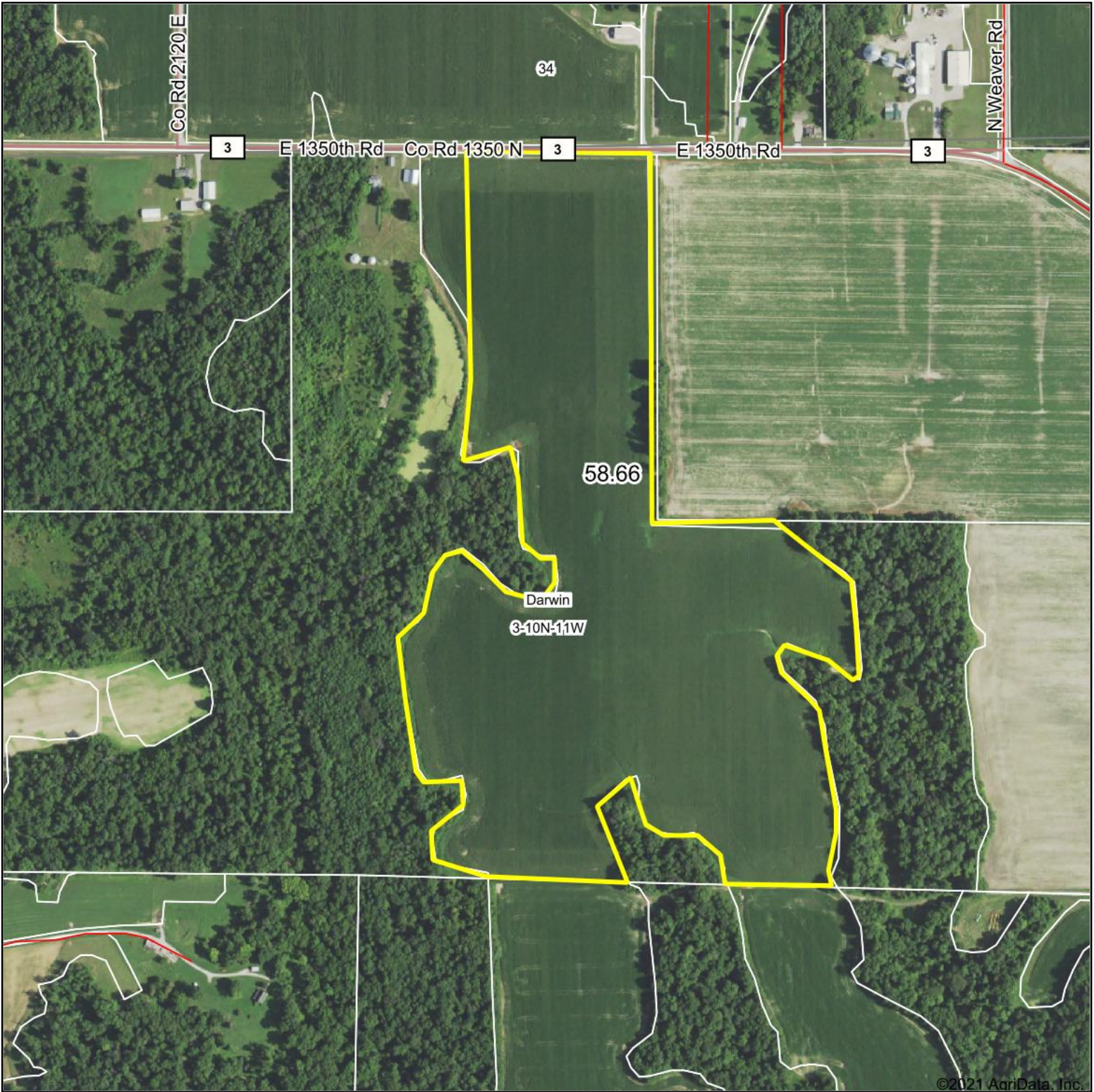
Crop yields and productivity indices for optimum management (B811) are maintained at the following NRES web site: <http://soilproductivity.nres.illinois.edu/>

\*\* Indexes adjusted for slope and erosion according to Bulletin 811 Table S3

<sup>a</sup> UNF = unfavorable; FAV = favorable

Soils data provided by USDA and NRCS. Soils data provided by University of Illinois at Champaign-Urbana.

# Aerial Map



©2021 AgriData, Inc.

Map Center: 39° 20.5517', -87° 37.2323'



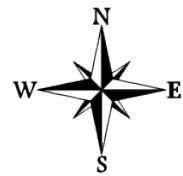
WHITETAIL PROPERTIES REAL ESTATE  
HUNTING | RANCH | FARM | TIMBER

Maps Provided By:



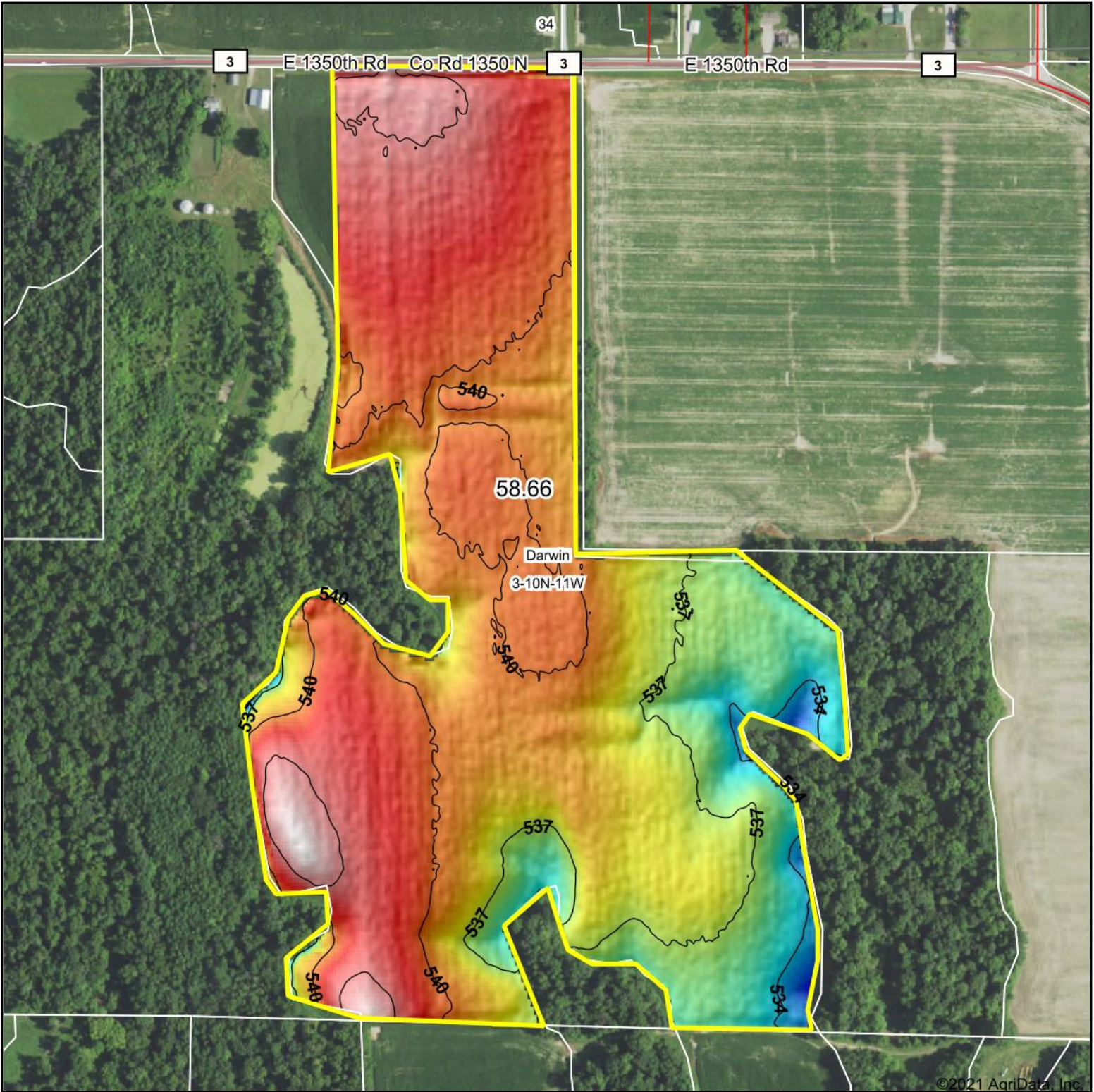
© AgriData, Inc. 2021 www.AgriDataInc.com

**3-10N-11W**  
**Clark County**  
**Illinois**

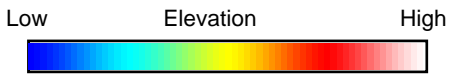


9/1/2021

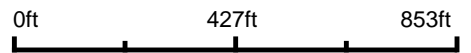
Field borders provided by Farm Service Agency as of 5/21/2008.



©2021 AgriData, Inc.



Source: USGS 3 meter dem  
 Interval(ft): 3  
 Min: 531.3  
 Max: 544.7  
 Range: 13.4  
 Average: 539.3  
 Standard Deviation: 2.36 ft



**3-10N-11W**  
**Clark County**  
**Illinois**

map center: 39° 20.5517', -87° 37.2323'

**WHITETAIL PROPERTIES REAL ESTATE**  
 HUNTING | RANCH | FARM | TIMBER

Maps Provided By:



© AgriData, Inc. 2021 www.AgriDataInc.com

Field borders provided by Farm Service Agency as of 5/21/2008.