

FSA INFO PACKET
DEKALB CO, IL 85.75



RANCHANDFARMAUCTIONS.COM



United States
Department of
Agriculture

Lee County, Illinois



Common Land Unit

plss_a_il

- Cropland
- Tract Boundary

Wetland Determination Identifiers

- Restricted Use
- Limited Restrictions
- Exempt from Conservation
- Compliance Provisions

0 180 360 720
 Feet

2022 Program Year
Map Created December 02, 2021

Farm **6946**
Tract **7564**

Tract Cropland Total: 77.67 acres

United States Department of Agriculture (USDA) Farm Service Agency (FSA) maps are for FSA Program administration only. This map does not represent a legal survey or reflect actual ownership; rather it depicts the information provided directly from the producer and/or National Agricultural Imagery Program (NAIP) imagery. The producer accepts the data 'as is' and assumes all risks associated with its use. USDA-FSA assumes no responsibility for actual or consequential damage incurred as a result of any user's reliance on this data outside FSA Programs. Wetland identifiers do not represent the size, shape, or specific determination of the area. Refer to your original determination (CPA-026 and attached maps) for exact boundaries and determinations or contact USDA Natural Resources Conservation Service (NRCS).

Illinois
Lee

U.S. Department of Agriculture
Farm Service Agency

FARM: 6946
Prepared: 7/13/22 4:22 PM
Crop Year: 2022
Page: 5 of 5

Report ID: FSA-156EZ

Abbreviated 156 Farm Record

DISCLAIMER: This is data extracted from the web farm database. Because of potential messaging failures in MIDAS, this data is not guaranteed to be an accurate and complete representation of data contained in the MIDAS system, which is the system of record for Farm Records.

Tract Number: 7564 **Description** Sec 31 Shabbona Twp DeKalb Co

FSA Physical Location : DeKalb, IL **ANSI Physical Location:** DeKalb, IL

BIA Range Unit Number:

HEL Status: NHEL: no agricultural commodity planted on undetermined fields

Recon Number

Wetland Status: Wetland determinations not complete

2017- 63

WL Violations: None

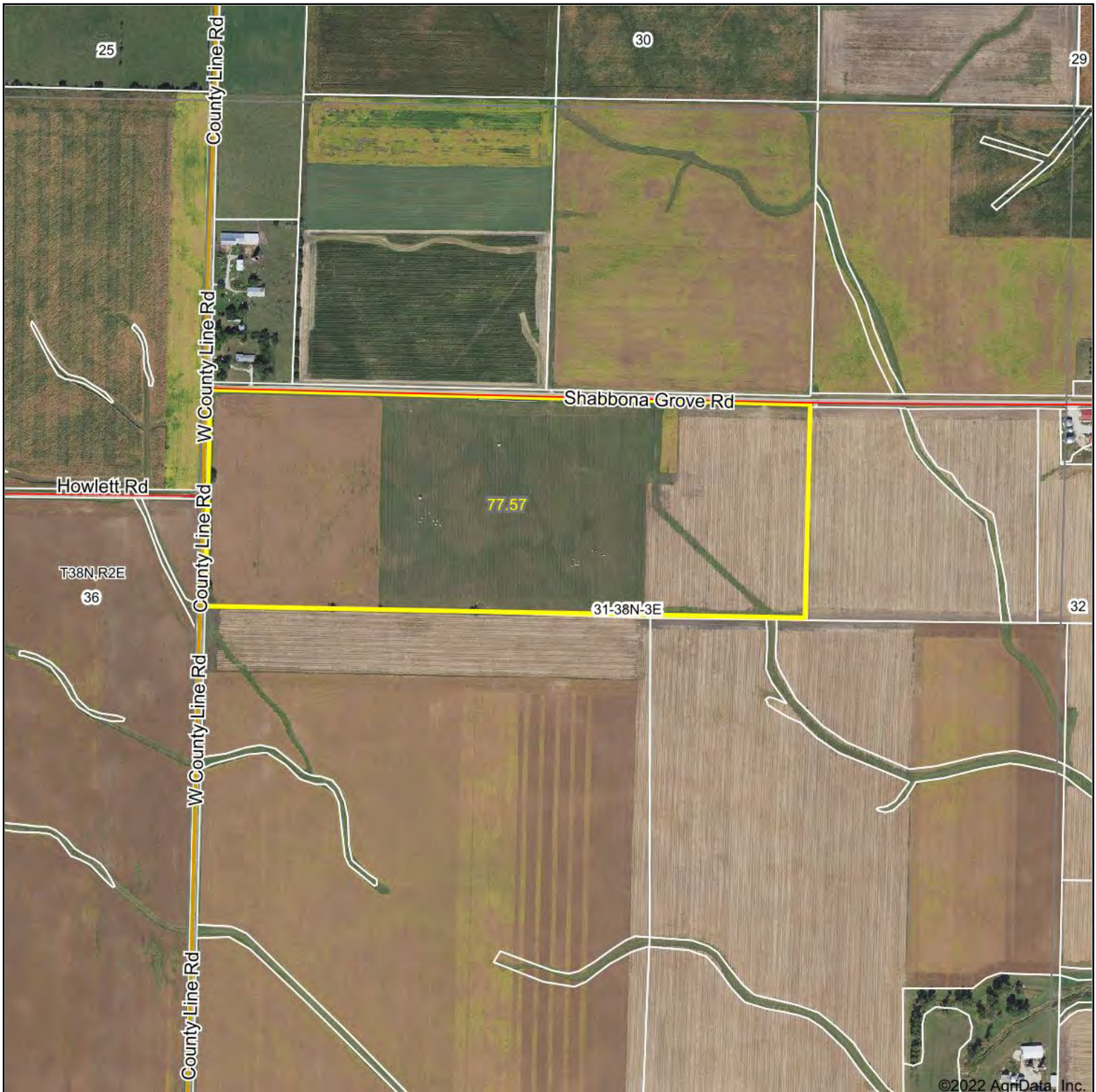
Farmland	Cropland	DCP Cropland	WBP	WRP	EWP	CRP Cropland	GRP
77.67	77.67	77.67	0.0	0.0	0.0	0.0	0.0
State Conservation	Other Conservation	Effective DCP Cropland	Double Cropped	MPL/FWP			
0.0	0.0	77.67	0.0	0.0			

Crop	Base Acreage	PLC Yield	CCC-505 CRP Reduction
OATS	2.65	59	0.00
CORN	32.26	141	0.00
SOYBEANS	26.05	46	0.00
Total Base Acres:	60.96		

Owners: LESLIE MULLINS REVOCABLE TRUST 101

Other Producers: None

Aerial Map



Map Center: 41.725448, -88.935138

0ft 796ft 1592ft


WHITETAIL PROPERTIES REAL ESTATE
HUNTING | RANCH | FARM | TIMBER

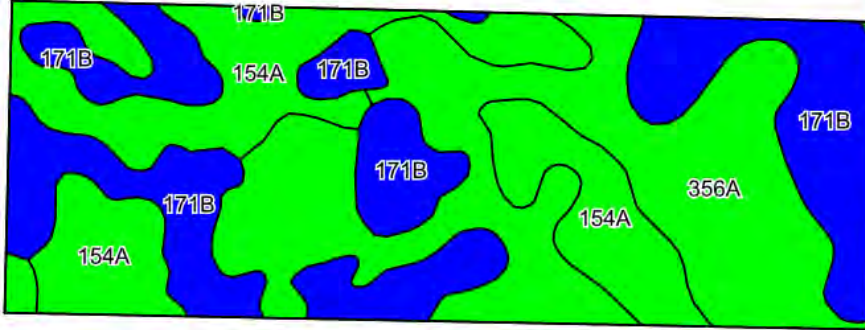
31-38N-3E
DeKalb County
Illinois



Maps Provided By:
 **surety**[®]
CUSTOMIZED ONLINE MAPPING
© AgriData, Inc. 2021 www.AgriDataInc.com

Field borders provided by Farm Service Agency as of 5/21/2008.

Soils Map



©2022 AgriData, Inc.



State: **Illinois**
 County: **DeKalb**
 Location: **31-38N-3E**
 Township: **Shabbona**
 Acres: **77.57**
 Date: **5/6/2022**



WHITETAIL PROPERTIES REAL ESTATE
 HUNTING | RANCH | FARM | TIMBER

Maps Provided By:



Soils data provided by USDA and NRCS.

Area Symbol: IL037, Soil Area Version: 16

Code	Soil Description	Acres	Percent of field	Il. State Productivity Index Legend	Subsoil rooting ^a	Corn Bu/A	Soybeans Bu/A	Wheat Bu/A	Oats Bu/A ^b	Sorghum ^c Bu/A	Alfalfa ^d hay, T/A	Grass-legume ^e hay, T/A	Crop productivity index for optimum management
356A	Elpaso silty clay loam, 0 to 2 percent slopes	29.67	38.2%		FAV	195	63	66	102	0	0.00	5.77	144
**171B	Catlin silt loam, 2 to 5 percent slopes	25.89	33.4%		FAV	**185	**58	**72	**98	0	**6.70	0.00	**137
154A	Flanagan silt loam, 0 to 2 percent slopes	22.01	28.4%		FAV	194	63	77	102	0	0.00	5.90	144
Weighted Average						191.4	61.3	71.1	100.7	*-	2.24	3.88	141.7

Table: Optimum Crop Productivity Ratings for Illinois Soil by K.R. Olson and J.M. Lang, Office of Research, ACES, University of Illinois at Champaign-Urbana. Version: 1/2/2012 Amended Table S2 B811

Crop yields and productivity indices for optimum management (B811) are maintained at the following NRES web site: <http://soilproductivity.nres.illinois.edu/>

** Indexes adjusted for slope and erosion according to Bulletin 811 Table S3

^a UNF = unfavorable; FAV = favorable

^b Soils in the southern region were not rated for oats and are shown with a zero "0".

^c Soils in the northern region or in both regions were not rated for grain sorghum and are shown with a zero "0".

^d Soils in the poorly drained group were not rated for alfalfa and are shown with a zero "0".

^e Soils in the well drained group were not rated for grass-legume and are shown with a zero "0".

Soils data provided by USDA and NRCS. Soils data provided by University of Illinois at Champaign-Urbana.