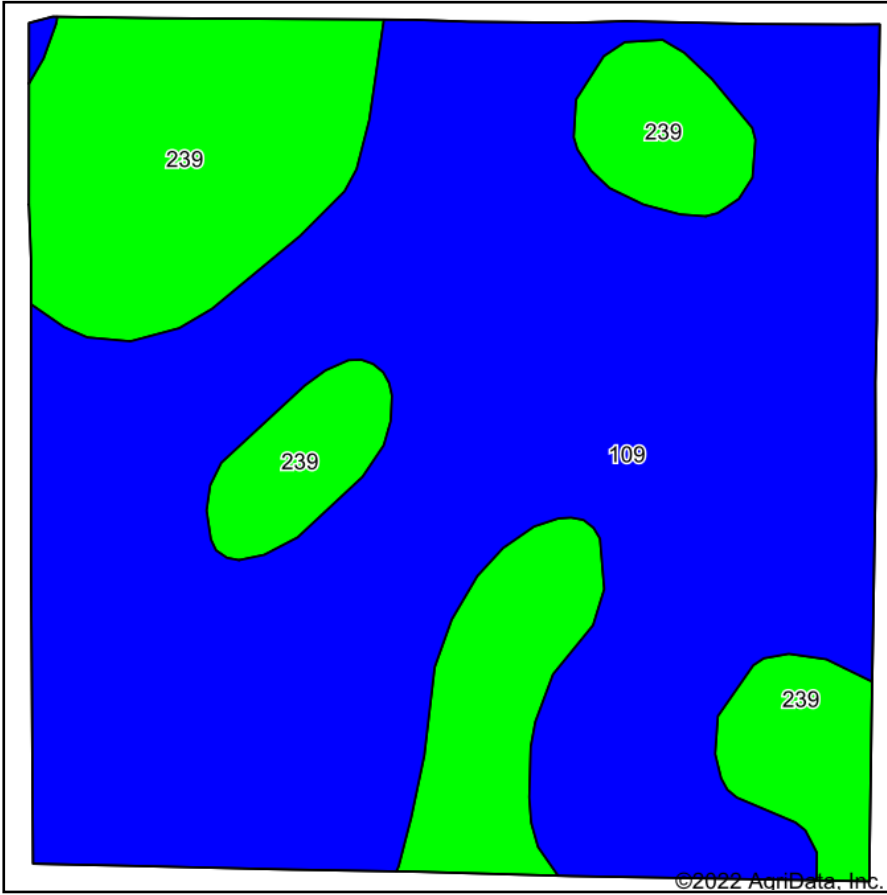
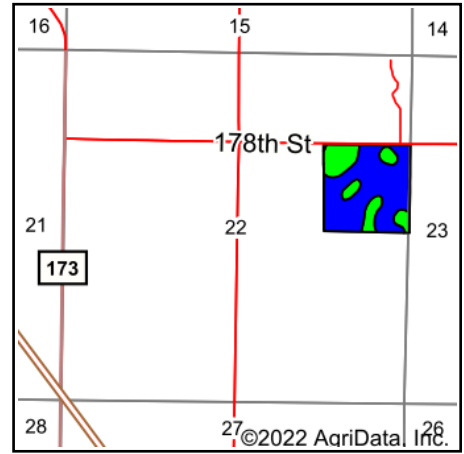


Soils Map



Soils data provided by USDA and NRCS.



State: **Minnesota**
 County: **Blue Earth**
 Location: **22-107N-25W**
 Township: **McPherson**
 Acres: **39.8**
 Date: **5/4/2022**



WHITETAIL PROPERTIES REAL ESTATE
 HUNTING | RANCH | FARM | TIMBER

Maps Provided By:



© AgriData, Inc. 2021

www.AgriDataInc.com



Area Symbol: MN013, Soil Area Version: 19

Code	Soil Description	Acres	Percent of field	Non-Irr Class Legend	Soil Drainage	Non-Irr Class *c	Productivity Index	*n NCCPI Overall
109	Cordova clay loam, 0 to 2 percent slopes	28.51	71.6%		Poorly drained	IIw	87	87
239	Le Sueur loam, 1 to 3 percent slopes	11.29	28.4%		Somewhat poorly drained	Iw	97	91
Weighted Average						1.72	89.8	*n 88.1

*n: The aggregation method is "Weighted Average using all components"

*c: Using Capabilities Class Dominant Condition Aggregation Method

Soils data provided by USDA and NRCS.