

LAND AUCTION



297.2 AC± | 4 TRACTS | COFFEY CO, KS

AUCTION:

LIVE AND ONLINE AT RANCHANDFARMAUCTIONS.COM

AUCTION DATE: 5/17/24 | AUCTION TIME: 11:00 AM

**AUCTION LOCATION: WAVERLY COMMUNITY BUILDING
408 PEARSON AVE, WAVERLY, KS 66871**

Located, very conveniently, just 4 miles off Interstate 35 and 70± miles from the metro Kansas City area, these 297± acres are easily accessible. The habitat here is diverse with a nice mix of open grass hillsides, timbered bottoms and several creeks. Sand Creek and a smaller tributary creek come together in the western half of this property. Those creeks, along with several additional ponds, provide plenty of year-round water. Surrounding landscape also lends itself very well to wildlife, recreation and livestock. The blacktop road frontage along most of the north property line will allow for great access into the farm and provides great build site options for a home or cabin type building. With a good amount of timber that parallels the creek bottom areas with pockets of big mature trees and heavy brush cover. The trails and wildlife sign are impressive, with many deer trails that wind all through the bottoms and along the lower hillsides, showing that quite a few deer are using this property regularly. This farm has a very nice mix of multi-use, including a small hobby farm or a country estate. This is a highly desirable area with the new anticipated economic improvements that will be coming to the immediate area with the addition of a 1,200/job chip manufacturing facility nearby. This will bring business professionals to the area in the market for small acreage home-sites or hobby farm opportunities.



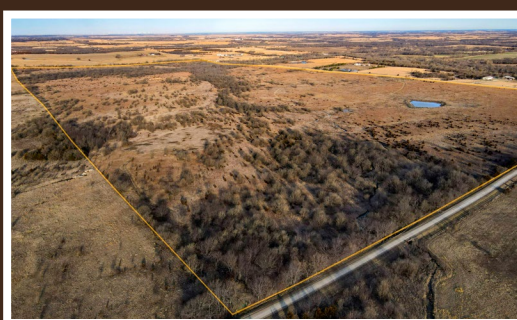
TRACT 1: 38 ± ACRES

Approximately 38± acres with road frontage on two sides, including blacktop frontage on Old Hwy 50, which is the north property line. This tract is mostly open, with a small pond near the center and rolling terrain. The great access will allow for an excellent open home site with views overlooking the creek bottom and the rolling terrain.



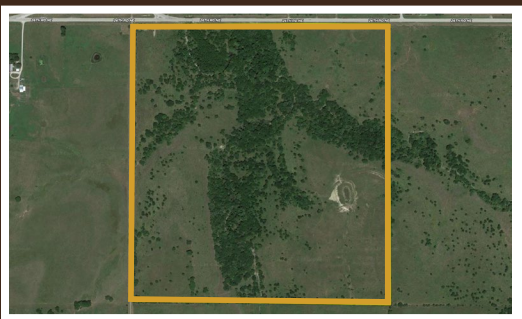
TRACT 2: 40 ± ACRES

Approximately 40± acres with blacktop county road frontage on the north side of the property. This parcel has some small pockets of trees near the low area with a little bit of creek frontage in the SW corner of the property. With rolling terrain, great views, and easy access off the blacktop, this is an exceptional build acreage for a country home and hobby farm enthusiast.



TRACT 3: 78 ± ACRES

Approximately 78± acres with county road frontage on the east side of the property. This is an excellent recreational opportunity for a small farm that has a very convenient location. Just several miles off the Interstate, this parcel is extremely easy to get to and will also have several options for a cabin or home. The property has nice views and has a strong mix of tree habitat, seasonal creek bottom, and grass.



TRACT 4: 141 ± ACRES

Approximately 141± acres with two creeks joining on the property for a very nice recreational opportunity. This farm is very conveniently located with easy access off a blacktop of Old Hwy 50. This parcel has excellent tree cover with a mix of large timber and wooly bottoms. The deer sign and trails are beaten down and there are several great locations for stand sites, feeders and food plots. The great views make this an excellent property to build your weekend cabin or life-long residence.

IN COOPERATION WITH WHITETAIL PROPERTIES REAL ESTATE, LLC

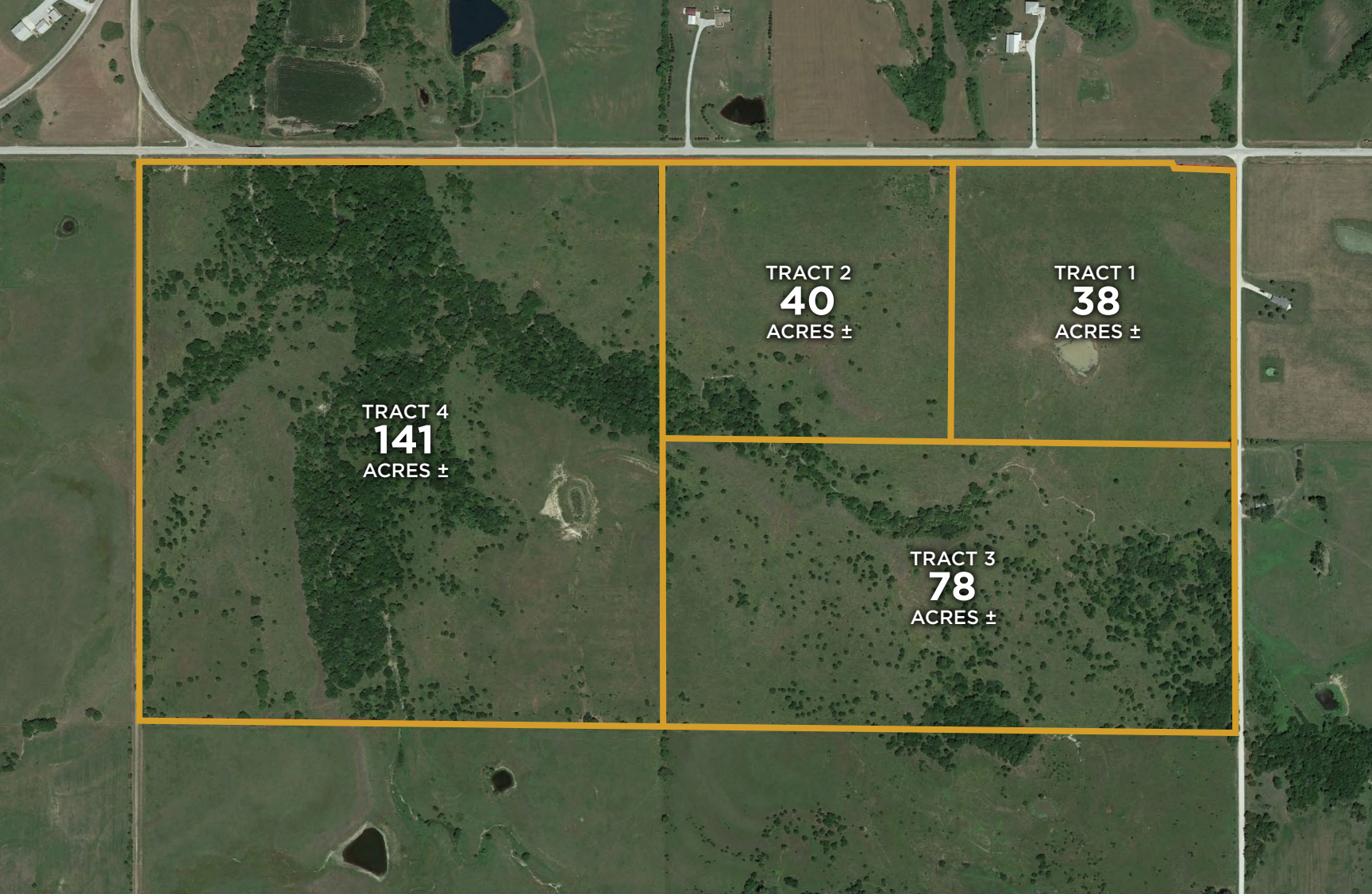
TODD BIGBEE, AGENT: 620.518.0806 | todd.bigbee@whitetailproperties.com

TOM MCFARLANE, AGENT: 316.755.6374 | tom.mcfarlane@whitetailproperties.com

RANCHANDFARMAUCTIONS.COM

GO TO RANCHANDFARMAUCTIONS.COM FOR ADDITIONAL INFORMATION, PHOTOS, SOIL MAPS AND TERMS.

IN COOPERATION WITH WHITETAIL PROPERTIES REAL ESTATE LLC | Jefferson Kirk Gilbert, Ranch & Farm Auctions (CO00002929), KS Broker Lic. # 00237080 | Joe Gizdic, Director, Ranch & Farm Auctions, 217.299.0332
Todd Bigbee, KS Land Specialist for Whitetail Properties Real Estate, LLC, 620.518.0806 | Tom McFarlane, KS Land Specialist for Whitetail Properties Real Estate, LLC, 316.755.6374 | Brandon Hamel, Auctioneer



TRACT 4
141
ACRES ±

TRACT 2
40
ACRES ±

TRACT 1
38
ACRES ±

TRACT 3
78
ACRES ±

TERMS OF SALE

Thank you for participating in this auction. Please familiarize yourself with the terms and conditions as all sales are final and irrevocable. The terms of sale are non-negotiable. Good luck and good bidding!

Registration at the auction (online and/or in person) finalizes each bidder's agreement to the terms and conditions of sale as stated in the Contract and its Addenda which are incorporated by reference into your bidding. Do not bid until you have read and agree to the terms and conditions. By bidding you are representing that you have read and agree to be bound by the terms and conditions for this sale as stated herein. DO NOT BID unless you have registered, received a Bidder's Card or paddle number and have read and agreed to be bound by the terms of sale in the Contract as they are enforceable against you upon becoming a high bidder. The successful bidder will be required to execute a Sales Agreement at the conclusion of the auction and submit the appropriate down payment in a timely manner as instructed by the Auctioneer.

All properties are sold "AS IS, WHERE IS" with no financing, inspection or other contingencies to sale. The Broker and Auction Company represent the seller only and do not inspect properties on the bidder's behalf. Read the Contract and Auction Day Notes to determine the existence of any disclosures, exclusions, representations and disclaimers. Do not bid if you have not inspected the property(ies). By bidding you agree to all disclosures.

Buyers receive a deed and Title Insurance Policy as provided by the Closer indicated in the Contract (any mobile/manufactured housing not legally affixed to the property shall only be conveyed by a Hold Harmless Agreement or Quitclaim Bill of Sale unless otherwise noted in the Disclosures). The current year's taxes are prorated through the day of closing as is customary unless otherwise noted or announced on sale day.

Or in abstract states, the seller shall provide a continuation of the abstract of title through the date of sale for the buyer or buyers attorney to examine.

The sale of this property may be subject to a Buyer's Premium, which will be added to the high bid and included in the total purchase price. Please see the Auction Day Notes, The Contract for Sale, and/or the Auctioneer for specifics about the property you wish to bid on.

Tracts sold by the acre - The contract will indicate the current acreage, bid per acre and the high bid will be the current acreage multiplied by the high bid per acre. If a survey is required prior to closing that would result in a change to acreage, the contract will be adjusted to that acreage prior to closing and the

purchase price will reflect that change in acreage.

If a survey is required, it is typically done immediately following the auction. The per acre bid at auction will then be multiplied by actual surveyed acres to determine the final sales price at closing. The purchase agreement and sales day announcements will identify the party responsible for survey cost.

Each high bidder must sign a purchase agreement and make a 10% non-refundable deposit immediately following the auction to the designated Title Company or escrow agent noted on the Purchase Agreement. Cash, wire transfers, cashier's checks, personal checks and business checks (electronically processed) are accepted. For online only auctions, wire transfers are the preferred method for deposits. Wire instructions will be sent from the escrow agent or title company at the conclusion of the auction or the next day. The balance of the purchase price and all closing costs are due within 30 days unless otherwise noted or announced. Bidding starts at the nominal Opening Bid(s) indicated and is open to the public. The Auctioneer reserves the right to group, add to, delete, withdraw, consolidate or break down lots and/or quantities offered, to sell out of scheduled sequence, to reject any bid which is only a fraction advance over the preceding bid, to regulate bidding, to accept or reject any or all bids, and to cancel or reschedule an auction. The Auctioneer will call the sale and control any increments of bidding. To make a bid, raise your hand or Bid Card to be recognized. The bidding happens quickly. Absentee bids may be accepted at the discretion of the Auctioneer. The Auctioneer reserves the right to enter bids on behalf of absentee bidders. Any mistakes during bidding as to who has the high bid and/or at what price may be called to the Auctioneer's attention and corrected. The Auctioneer is the sole arbiter and controller of the conduct of the auction and shall be the final and absolute authority without liability to any party.

For online only sales, click the "Bid Now" button to enter your bid. Be sure to create an account and sign in early so you do not miss the opportunity to bid. You can also enter a maximum bid to allow for bids to be increased by the noted increments up to your high bid. If you cannot log in, feel free to call (217) 922-0811 to reach customer service to register and bid by phone.

Your inspection of the property(ies) and attendance at this auction are at your own risk. Broker and Seller, their agents and employees, expressly disclaim any "invitee" relationship and shall not be liable to any person for damage to their person or property while in, on or about these properties, nor shall they be liable for any defects, dangers or conditions on the property(ies). All persons enter the property(ies) and attend the auction at their own risk and shall defend, indemnify, and save harmless Broker and Seller, their agents and employees, from any and all liability attendant thereto.

All auctions are subject to court or seller approval unless otherwise noted as "Absolute". Most sales are approved within 2 business days. Buyers are not



allowed possession until closing and filing of the deed, at which time the property should be re-keyed if required. If for any reason the court or Seller approval is not granted, the Down Payment shall be returned in its entirety to the high bidder. "Showing" requests from Buyers after the auction may not be able to be accommodated.

If more than one property is being auctioned, the Auctioneer may choose to offer a group of the properties for auction at the same time. This is called "BUYER'S CHOICE" and is to accommodate buyers who have an interest in more than one property and/or have 2nd and 3rd choices if they are outbid for a favorite property. Upon winning the bid, please choose which property, or properties, you want. You pay the high bid price for each property selected. Each sale is final and stands alone. Remaining properties are then offered in another round of bidding. Anyone may bid at any time, including prior High Bidders.

Ranch & Farms Auctions, LLC, Whitetail Properties Real Estate, LLC and the Seller expressly disclaim any liability for errors, omissions or changes regarding any information provided for these sales. Please read the Contract and Auction Day Notes for a full and complete understanding of any and all disclaimers. Bidders are strongly urged to rely solely upon their own inspections and opinions in preparing to purchase property and are expressly advised to not rely on any representations made by the Seller or their agents and employees. Property information may change without notice and potential purchasers should investigate all data fully before relying upon it.

The information contained within is believed to be accurate, but Seller and Auction Company do not warrant any information contained within the description. All lines on maps are approximate and buyers should verify the information. All stated measurements including but not limited to acreage, sq footage, map dimensions, and/or sketches are stated for marketing purpose only unless it is stated that the measurements are verified by an independent surveyor or other source. All measurements shall be assumed to be approximate or more/less and obtained from sources to be considered reliable such as: government tax records, mapping software, assessor's office records or FSA maps. Legal descriptions may be subject to existing fence/field boundaries. No warranty is expressed or implied as to the exact acreages of property. The purchase price based on these measurements entered on the purchase agreement is final unless buyer and seller have agreed otherwise in writing prior to signing. If exact acreage or square footage is a concern, the Property should be independently measured. Online Bidding Disclaimer; Under no circumstances shall Bidder have any kind of claim against Auction company, auctioneer, broker or anyone else, if the Internet

service fails to work correctly before or during the auction. Auction company, auctioneer and broker cannot guarantee that bids placed online will always be transmitted to or received by the auctioneer in a timely fashion. Internet bidding is subject to delays and potential failure that is outside of the control of the auction company. You agree to hold Auction company, auctioneer and broker and its employees harmless for any interruptions or disruptions during online bidding. At the sole discretion of the Company, the auction may be suspended, postponed, or canceled if Internet service is unstable or disrupts the online portion of any event that is simulcast as an Internet Auction. The auctioneer has the sole discretion to accept or refuse any bid. The Auction company, auctioneer and broker may change sale order, regroup or modify as needed. Online bidders are encouraged to use the max bid feature and place your bids in a timely fashion. Waiting until the last minute to place your bid can result in the auctioneer recognizing another high bidder because your bid did not show up instantaneously. All sale day announcements will take precedence over any prior advertising or announcements.

BUYERS PREMIUM:	0%
TAXES:	\$1,119.38
TENANCY:	Open tenancy for 2024
RENTS:	No rents
MINERALS:	Seller owned rights will convey
CLOSING COSTS:	Split 50/50
CLOSING DATE:	On or before 30 days from seller acceptance
DOWN PAYMENT:	10%
POSSESSION DATE:	At closing
SURVEY:	Survey to be completed prior to closing/Seller paying
SELLER:	Grainger/Webb
SALE ORDER:	By the acre
SALE METHOD:	Sells Subject to seller acceptance

**THANK YOU FOR BEING A
PART OF TODAY'S AUCTION!**