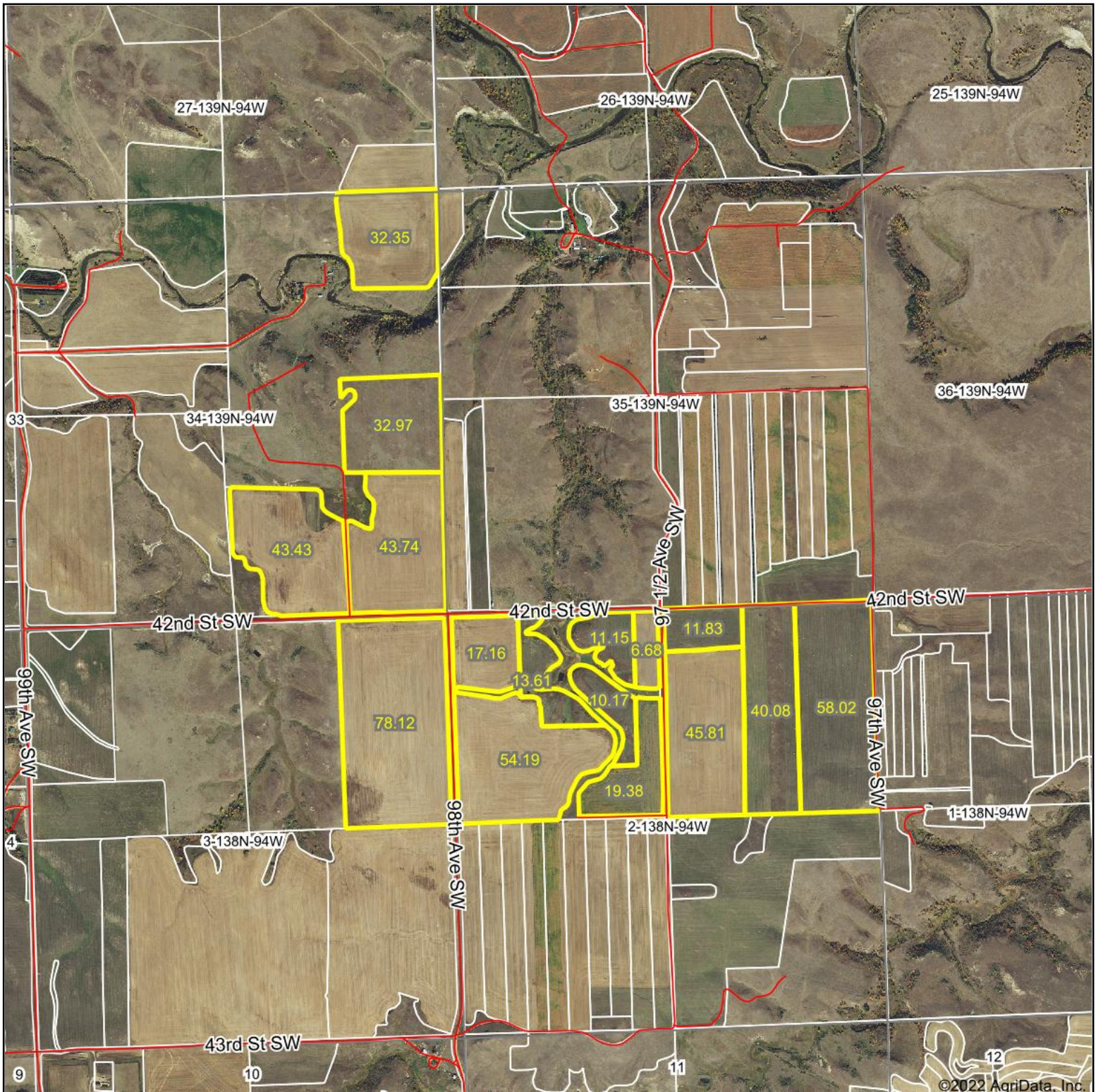


SOIL INFO PACKET



RANCHANDFARMAUCTIONS.COM

Aerial Map



©2022 AgriData, Inc.



WHITETAIL PROPERTIES REAL ESTATE

HUNTING | RANCH | FARM | TIMBER

Maps Provided By:



© AgriData, Inc. 2021

www.AgriDataInc.com

Map Center: 46.806005, -102.512907

0ft 1934ft 3869ft

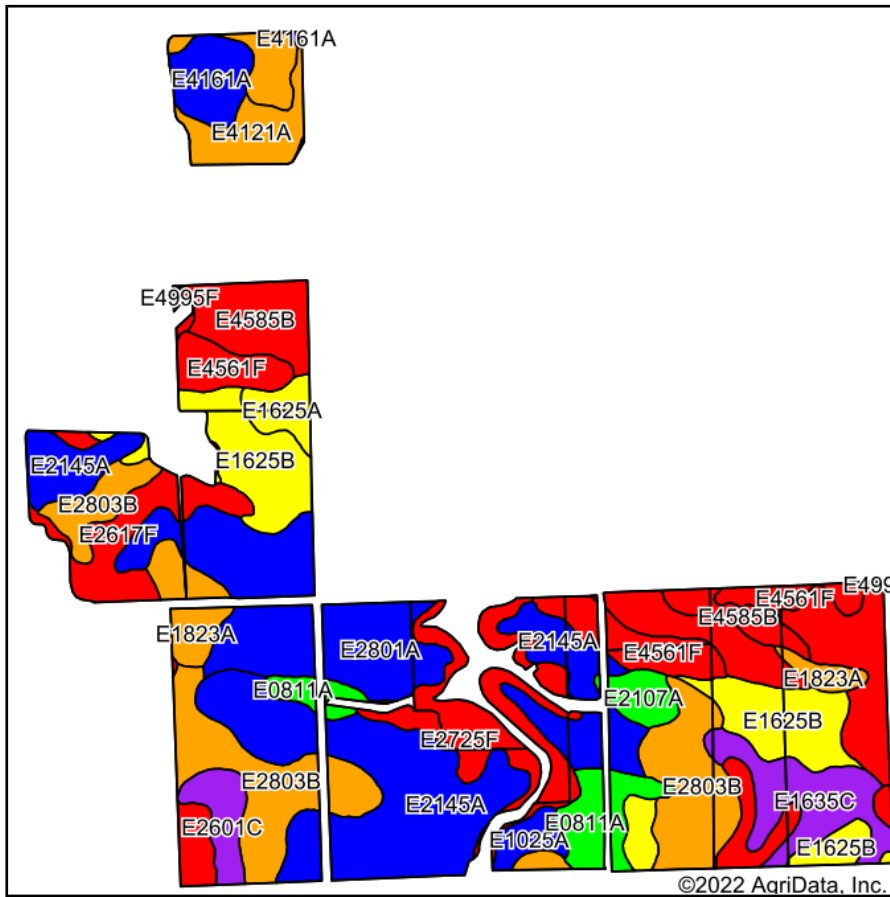
35-139N-94W
Stark County
North Dakota



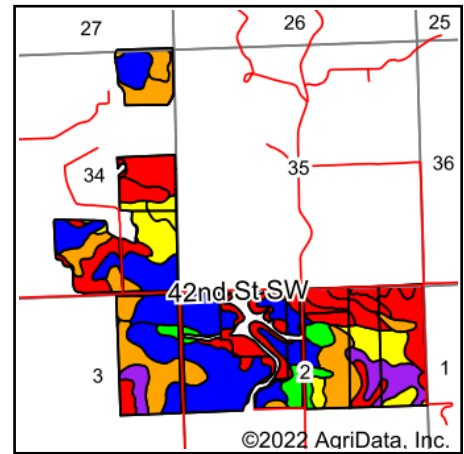
6/14/2022

Field borders provided by Farm Service Agency as of 5/21/2008.

Soils Map



Soils data provided by USDA and NRCS.



State: **North Dakota**
 County: **Stark**
 Location: **35-139N-94W**
 Township: **East Stark**
 Acres: **518.69**
 Date: **6/14/2022**



WHITETAIL PROPERTIES REAL ESTATE
 HUNTING | RANCH | FARM | TIMBER

Maps Provided By:

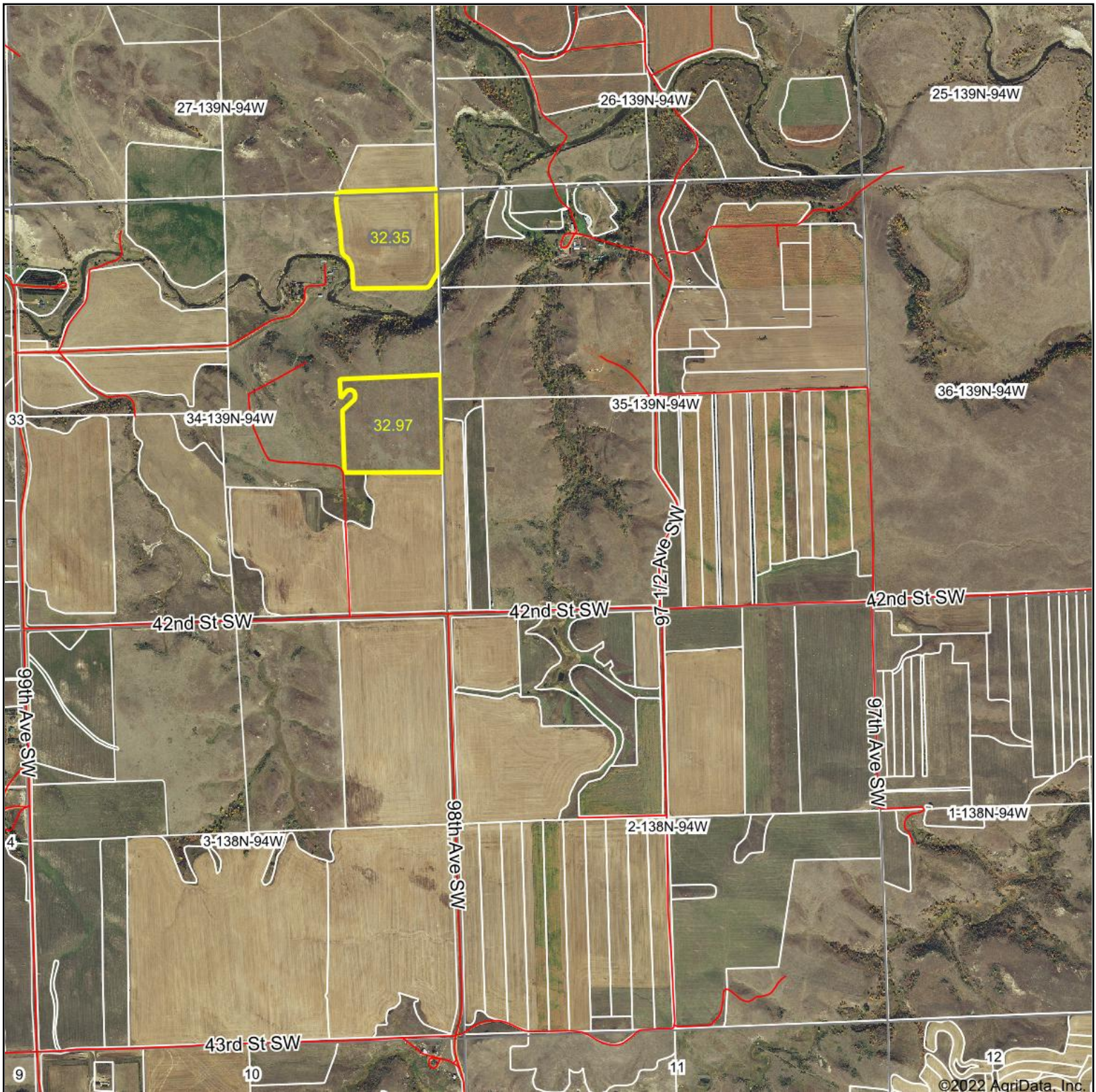


Area Symbol: ND089, Soil Area Version: 21

Code	Soil Description	Acres	Percent of field	PI Legend	Productivity Index
E2145A	Shambo loam, 0 to 2 percent slopes	91.23	17.6%		87
E2803B	Amor-Shambo loams, 3 to 6 percent slopes	63.24	12.2%		76
E2801A	Amor-Arnegard loams, 0 to 3 percent slopes	55.13	10.6%		81
E1625B	Vebar-Parshall fine sandy loams, 3 to 6 percent slopes	47.08	9.1%		63
E4585A	Manning fine sandy loam, 0 to 2 percent slopes	33.68	6.5%		47
E2725F	Arikara-Shambo-Cabba loams, 9 to 70 percent slopes	30.83	5.9%		24
E4561F	Manning-Schaller-Wabek complex, 6 to 35 percent slopes	28.89	5.6%		26
E2617F	Cabba-Chama-Shambo loams, 9 to 50 percent slopes	24.40	4.7%		27
E4585B	Manning fine sandy loam, 2 to 6 percent slopes	23.45	4.5%		45
E1635C	Vebar-Tally fine sandy loams, 6 to 9 percent slopes	21.60	4.2%		51
E0811A	Grail silty clay loam, 0 to 2 percent slopes	16.47	3.2%		96
E1823A	Parshall fine sandy loam, 0 to 2 percent slopes	14.44	2.8%		71
E4121A	Havrelon loam, 0 to 2 percent slopes, occasionally flooded	12.72	2.5%		77
E4161A	Straw loam, 0 to 2 percent slopes, rarely flooded	12.04	2.3%		88
E2601C	Amor-Cabba loams, 6 to 9 percent slopes	8.76	1.7%		53
E3203B	Cherry silt loam, 0 to 6 percent slopes	7.52	1.4%		74
E1355D	Vebar-Flasher-Tally complex, 9 to 15 percent slopes	6.95	1.3%		32
E1625A	Vebar-Parshall fine sandy loams, 0 to 3 percent slopes	6.49	1.3%		66
E2107A	Arnegard loam, 0 to 2 percent slopes	6.31	1.2%		97
E1025A	Regent-Savage silty clay loams, 0 to 3 percent slopes	5.20	1.0%		84
E0617B	Belfield-Savage-Daglum complex, 2 to 6 percent slopes	1.31	0.3%		65
E4995F	Pits, gravel and sand	0.87	0.2%		6
E4123A	Havrelon-Fluvaquents complex, channeled, 0 to 2 percent slopes, frequently flooded	0.08	0.0%		40
Weighted Average					64.6

Soils data provided by USDA and NRCS.

Aerial Map



Map Center: 46.806005, -102.512907

0ft 1934ft 3869ft



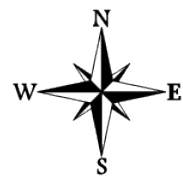
WHITETAIL PROPERTIES REAL ESTATE
HUNTING | RANCH | FARM | TIMBER

Maps Provided By:



© AgriData, Inc. 2021 www.AgriDataInc.com

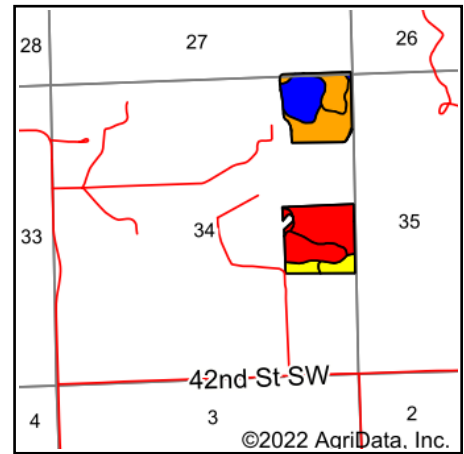
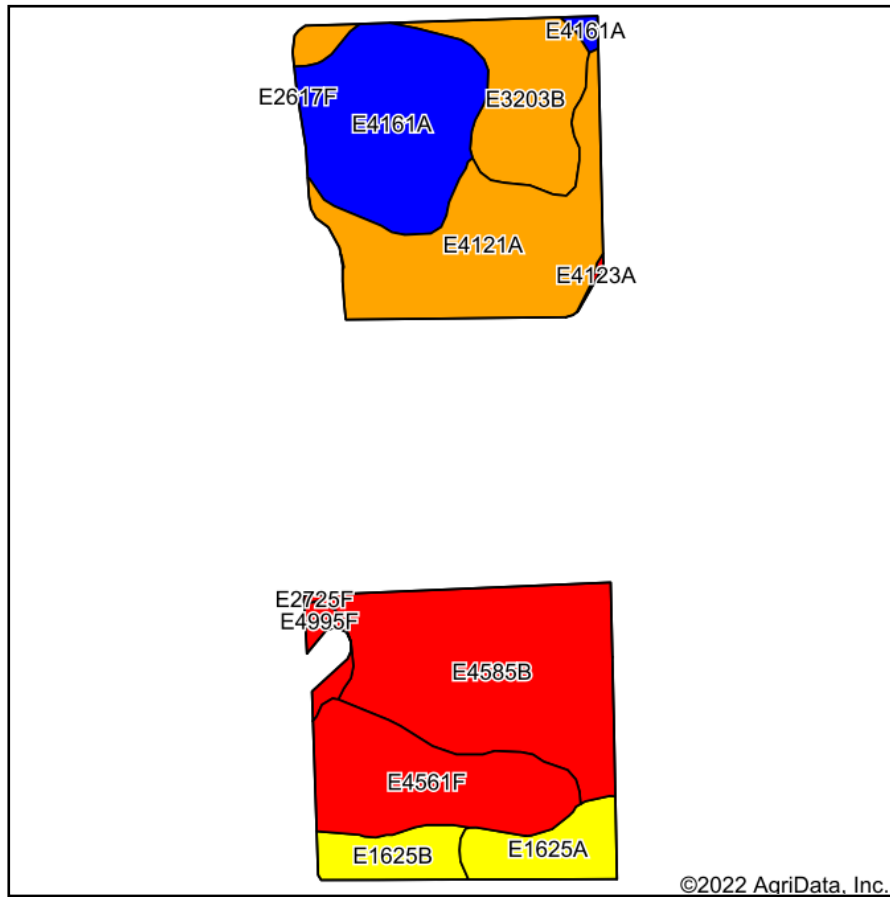
35-139N-94W
Stark County
North Dakota



6/14/2022

Field borders provided by Farm Service Agency as of 5/21/2008.

Soils Map



State: **North Dakota**
 County: **Stark**
 Location: **35-139N-94W**
 Township: **East Stark**
 Acres: **65.32**
 Date: **6/14/2022**



WHITETAIL PROPERTIES REAL ESTATE
 HUNTING | RANCH | FARM | TIMBER

Maps Provided By:



© AgriData, Inc. 2021

www.AgriDataInc.com

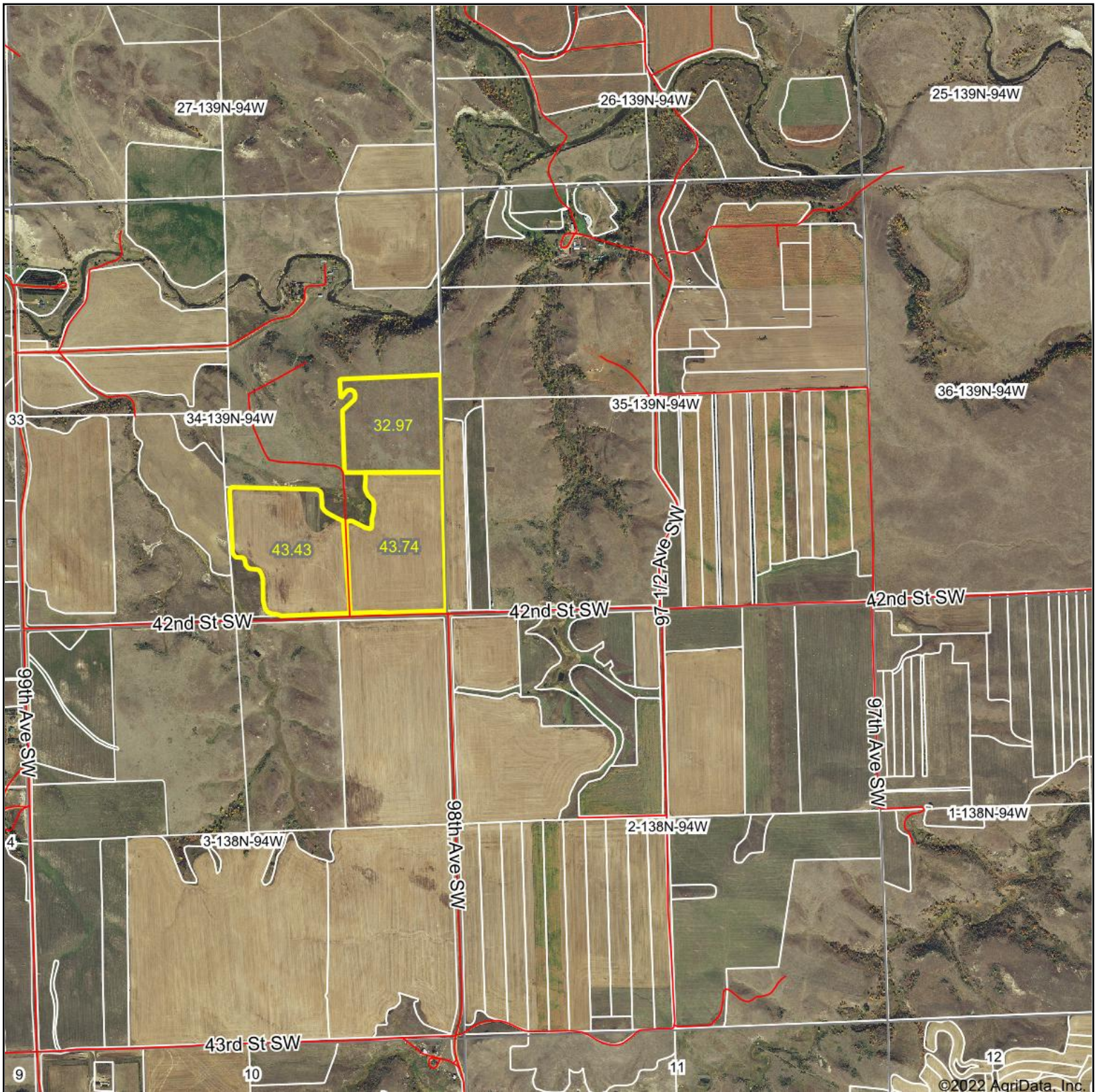


Area Symbol: ND089, Soil Area Version: 21

Code	Soil Description	Acres	Percent of field	PI Legend	Productivity Index
E4585B	Manning fine sandy loam, 2 to 6 percent slopes	16.73	25.6%		45
E4121A	Havrelon loam, 0 to 2 percent slopes, occasionally flooded	12.72	19.5%		77
E4161A	Straw loam, 0 to 2 percent slopes, rarely flooded	12.04	18.4%		88
E4561F	Manning-Schaller-Wabek complex, 6 to 35 percent slopes	9.17	14.0%		26
E3203B	Cherry silt loam, 0 to 6 percent slopes	7.52	11.5%		74
E1625A	Vebar-Parshall fine sandy loams, 0 to 3 percent slopes	3.43	5.3%		66
E1625B	Vebar-Parshall fine sandy loams, 3 to 6 percent slopes	2.72	4.2%		63
E4995F	Pits, gravel and sand	0.84	1.3%		6
E4123A	Havrelon-Fluvaquents complex, channeled, 0 to 2 percent slopes, frequently flooded	0.08	0.1%		40
E2725F	Arikara-Shambo-Cabba loams, 9 to 70 percent slopes	0.07	0.1%		24
Weighted Average					61.2

Soils data provided by USDA and NRCS.

Aerial Map



WHITETAIL PROPERTIES REAL ESTATE

HUNTING | RANCH | FARM | TIMBER

Maps Provided By:



© AgriData, Inc. 2021

www.AgriDataInc.com

Map Center: 46.806005, -102.512907

0ft 1934ft 3869ft

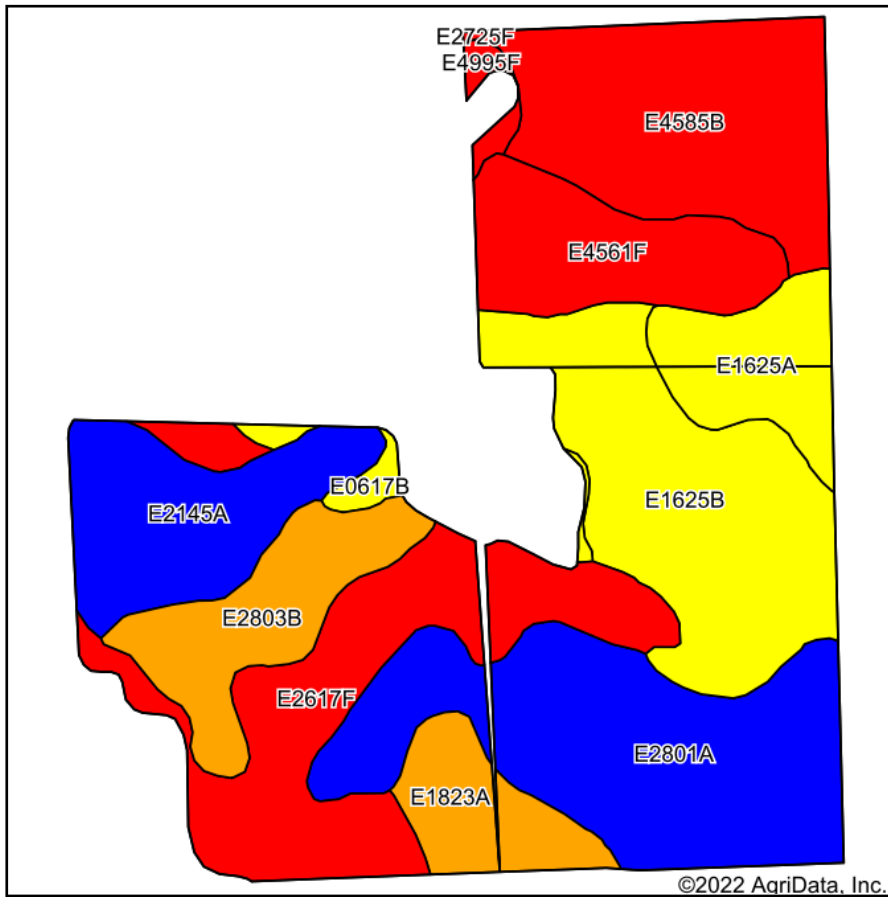
35-139N-94W
Stark County
North Dakota



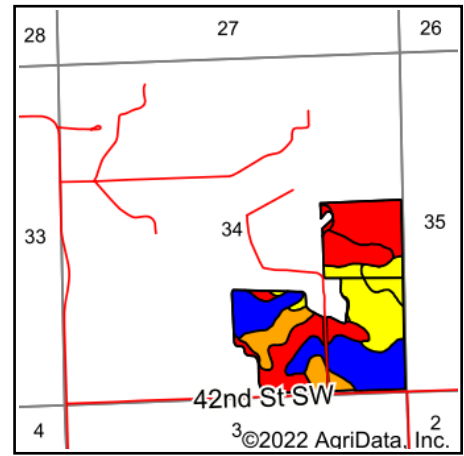
6/14/2022

Field borders provided by Farm Service Agency as of 5/21/2008.

Soils Map



Soils data provided by USDA and NRCS.



State: **North Dakota**
 County: **Stark**
 Location: **35-139N-94W**
 Township: **East Stark**
 Acres: **120.14**
 Date: **6/14/2022**



WHITETAIL PROPERTIES REAL ESTATE
 HUNTING | RANCH | FARM | TIMBER

Maps Provided By:



© AgriData, Inc. 2021

www.AgriDataInc.com

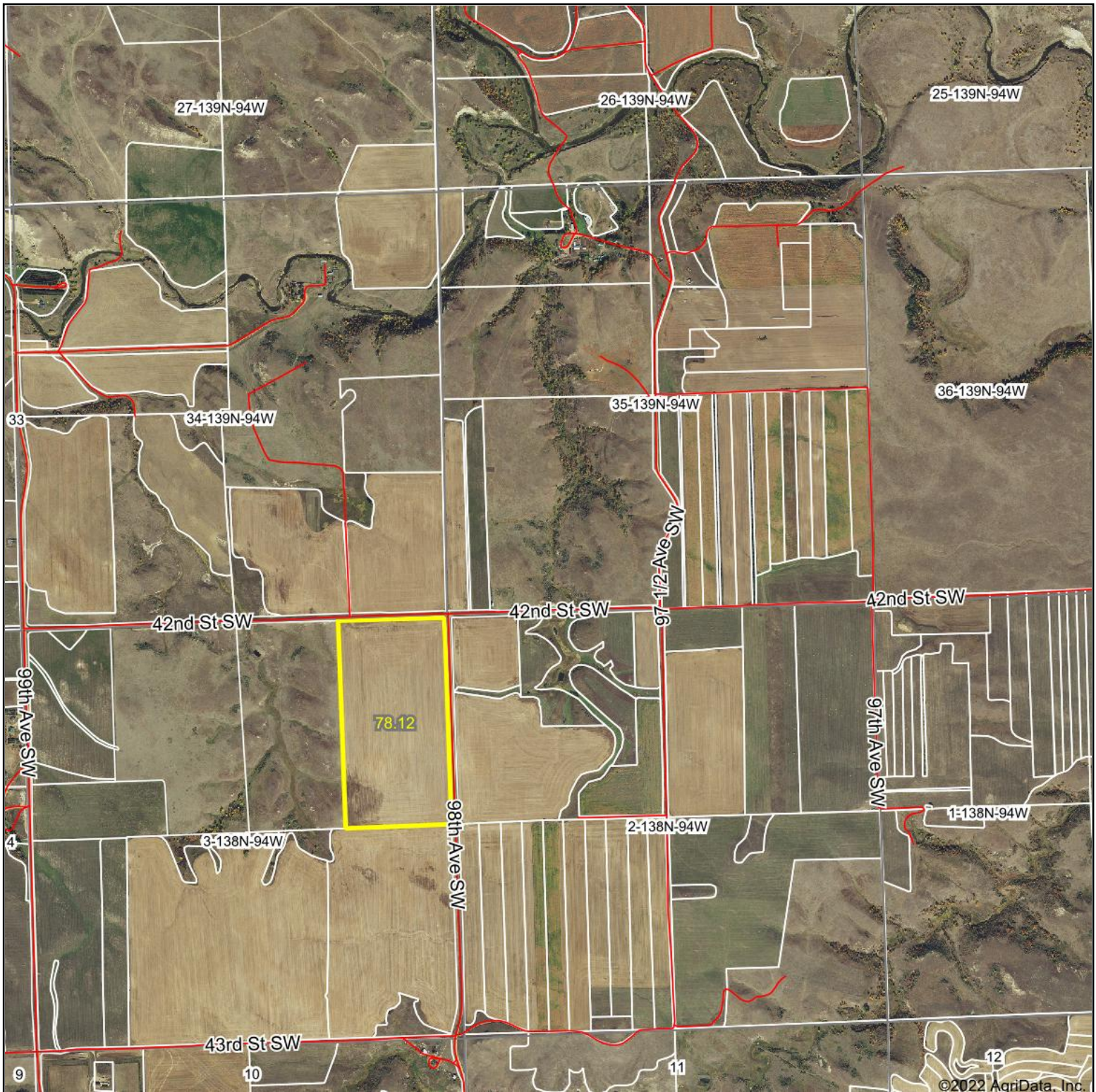


Area Symbol: ND089, Soil Area Version: 21

Code	Soil Description	Acres	Percent of field	PI Legend	Productivity Index
E2801A	Amor-Arnegard loams, 0 to 3 percent slopes	22.51	18.7%		81
E1625B	Vebar-Parshall fine sandy loams, 3 to 6 percent slopes	19.36	16.1%		63
E2617F	Cabba-Chama-Shambo loams, 9 to 50 percent slopes	18.86	15.7%		27
E4585B	Manning fine sandy loam, 2 to 6 percent slopes	16.75	13.9%		45
E2145A	Shambo loam, 0 to 2 percent slopes	10.64	8.9%		87
E4561F	Manning-Schaller-Wabek complex, 6 to 35 percent slopes	9.17	7.6%		26
E2803B	Amor-Shambo loams, 3 to 6 percent slopes	8.71	7.2%		76
E1625A	Vebar-Parshall fine sandy loams, 0 to 3 percent slopes	6.49	5.4%		66
E1823A	Parshall fine sandy loam, 0 to 2 percent slopes	5.43	4.5%		71
E0617B	Belfield-Savage-Daglum complex, 2 to 6 percent slopes	1.31	1.1%		65
E4995F	Pits, gravel and sand	0.84	0.7%		6
E2725F	Arikara-Shambo-Cabba loams, 9 to 70 percent slopes	0.07	0.1%		24
Weighted Average					58.6

Soils data provided by USDA and NRCS.

Aerial Map



WHITETAIL PROPERTIES REAL ESTATE

HUNTING | RANCH | FARM | TIMBER

Maps Provided By:



© AgriData, Inc. 2021

www.AgriDataInc.com

Map Center: 46.806005, -102.512907

0ft 1934ft 3869ft

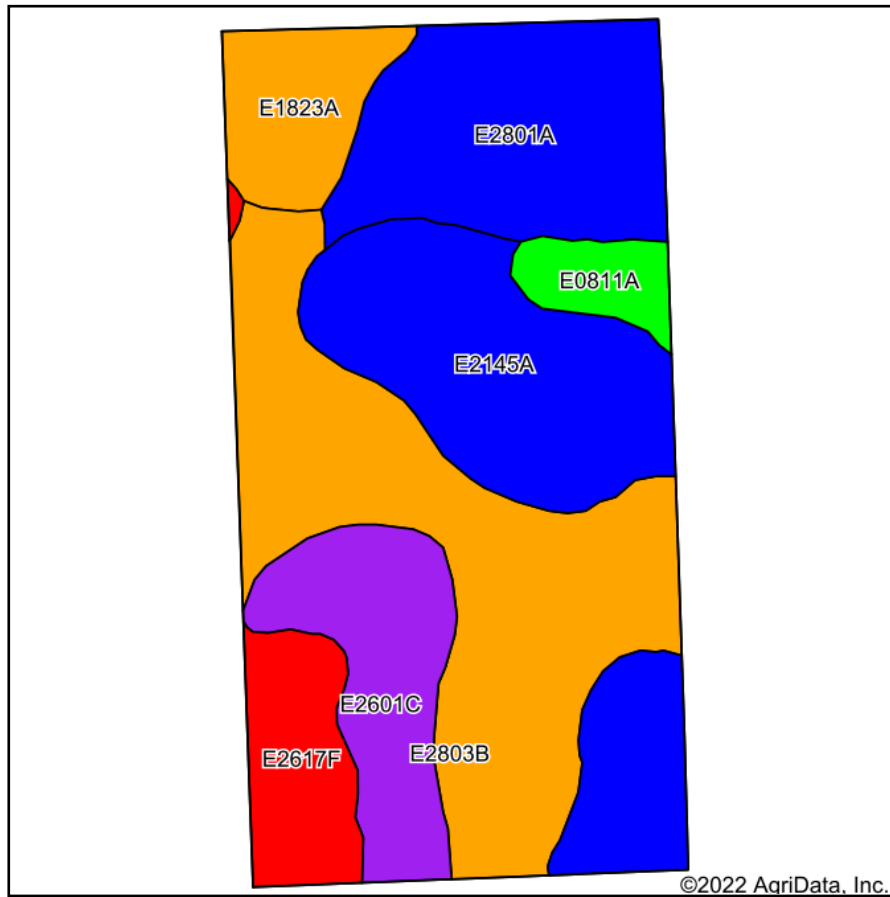
35-139N-94W
Stark County
North Dakota



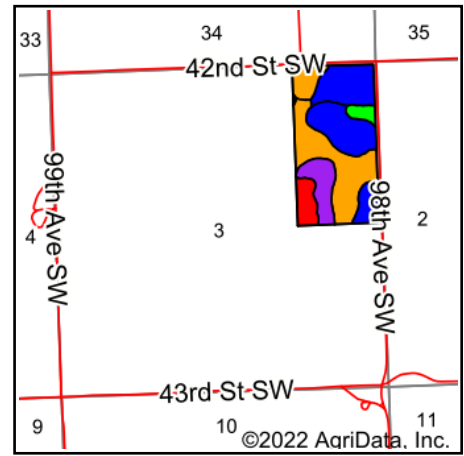
6/14/2022

Field borders provided by Farm Service Agency as of 5/21/2008.

Soils Map



Soils data provided by USDA and NRCS.



State: **North Dakota**
 County: **Stark**
 Location: **35-139N-94W**
 Township: **East Stark**
 Acres: **78.12**
 Date: **6/14/2022**



WHITETAIL PROPERTIES REAL ESTATE
 HUNTING | RANCH | FARM | TIMBER

Maps Provided By:

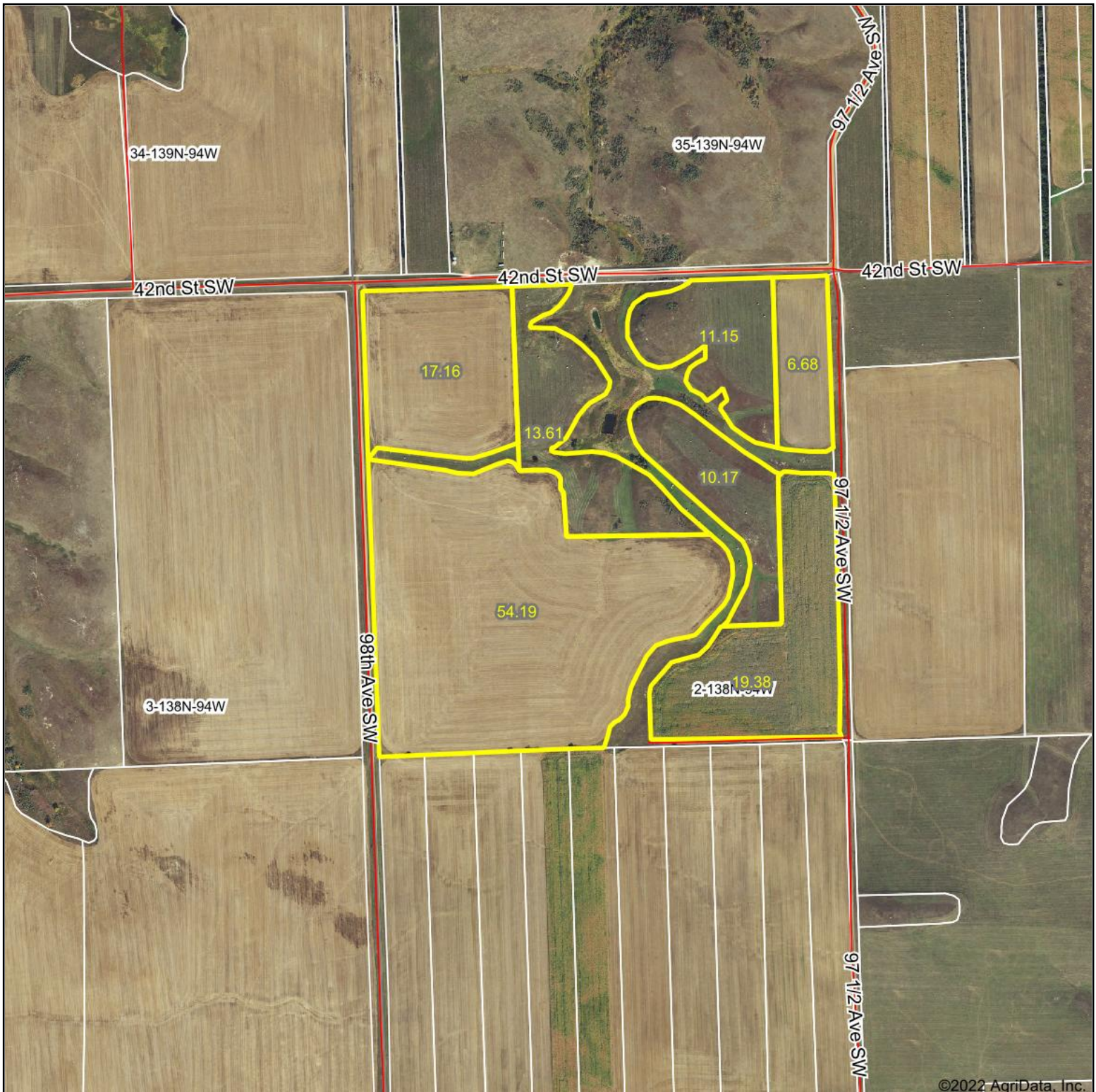


Area Symbol: ND089, Soil Area Version: 21

Code	Soil Description	Acres	Percent of field	PI Legend	Productivity Index
E2803B	Amor-Shambo loams, 3 to 6 percent slopes	23.60	30.2%		76
E2145A	Shambo loam, 0 to 2 percent slopes	19.18	24.6%		87
E2801A	Amor-Arnegard loams, 0 to 3 percent slopes	13.34	17.1%		81
E2601C	Amor-Cabba loams, 6 to 9 percent slopes	8.76	11.2%		53
E2617F	Cabba-Chama-Shambo loams, 9 to 50 percent slopes	5.54	7.1%		27
E1823A	Parshall fine sandy loam, 0 to 2 percent slopes	5.20	6.7%		71
E0811A	Grail silty clay loam, 0 to 2 percent slopes	2.50	3.2%		96
Weighted Average					73.8

Soils data provided by USDA and NRCS.

Aerial Map



©2022 AgriData, Inc.



WHITETAIL PROPERTIES REAL ESTATE

HUNTING | RANCH | FARM | TIMBER

Maps Provided By:



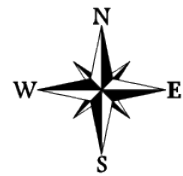
© AgriData, Inc. 2021

www.AgriDataInc.com

Map Center: 46.799780, -102.513913

0ft 857ft 1714ft

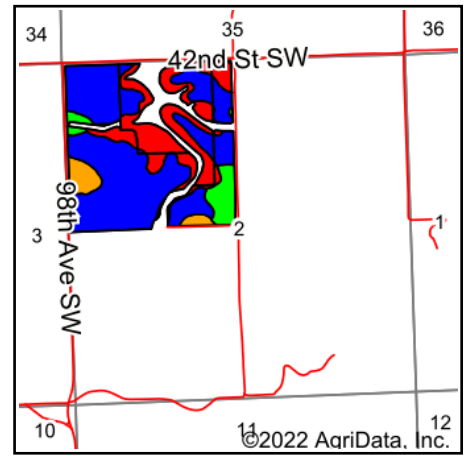
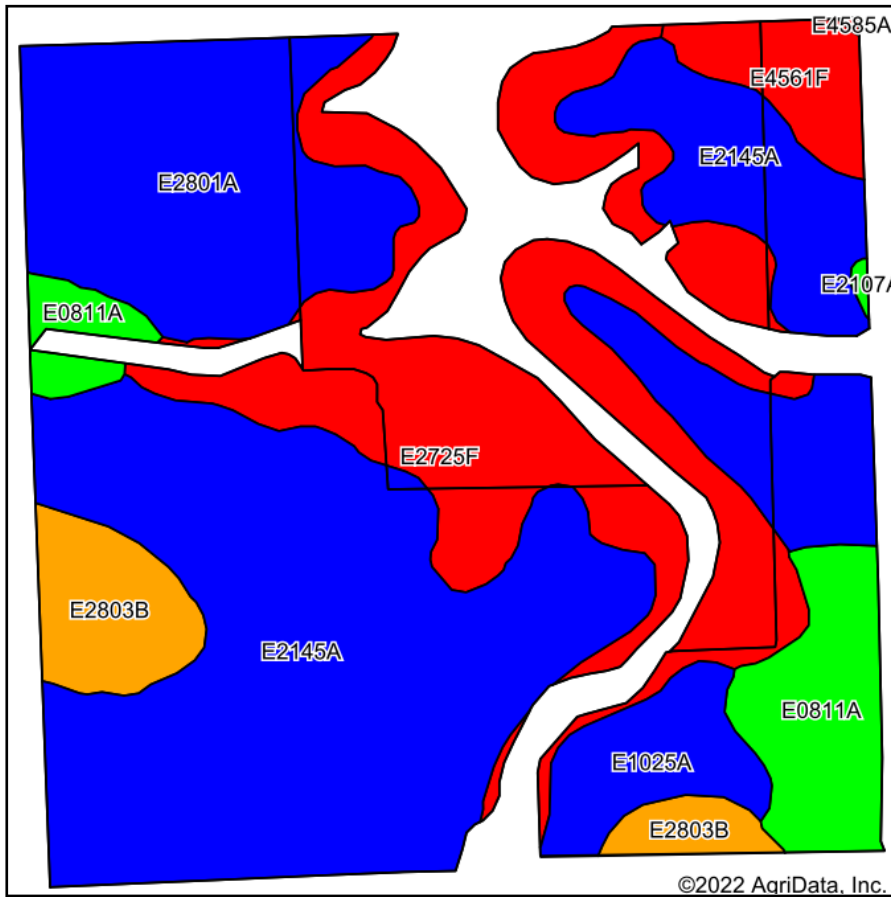
2-138N-94W
Stark County
North Dakota



6/14/2022

Field borders provided by Farm Service Agency as of 5/21/2008.

Soils Map



State: **North Dakota**
 County: **Stark**
 Location: **2-138N-94W**
 Township: **East Stark**
 Acres: **132.34**
 Date: **6/14/2022**



WHITETAIL PROPERTIES REAL ESTATE
 HUNTING | RANCH | FARM | TIMBER

Maps Provided By:



Area Symbol: ND089, Soil Area Version: 21

Code	Soil Description	Acres	Percent of field	PI Legend	Productivity Index
E2145A	Shambo loam, 0 to 2 percent slopes	57.23	43.2%		87
E2725F	Arikara-Shambo-Cabba loams, 9 to 70 percent slopes	30.76	23.2%		24
E2801A	Amor-Arnegard loams, 0 to 3 percent slopes	19.29	14.6%		81
E0811A	Grail silty clay loam, 0 to 2 percent slopes	9.20	7.0%		96
E2803B	Amor-Shambo loams, 3 to 6 percent slopes	6.76	5.1%		76
E1025A	Regent-Savage silty clay loams, 0 to 3 percent slopes	5.20	3.9%		84
E4561F	Manning-Schaller-Wabek complex, 6 to 35 percent slopes	3.75	2.8%		26
E2107A	Arnegard loam, 0 to 2 percent slopes	0.15	0.1%		97
Weighted Average					69.7

Soils data provided by USDA and NRCS.

Aerial Map



©2022 AgriData, Inc.



WHITETAIL PROPERTIES REAL ESTATE

HUNTING | RANCH | FARM | TIMBER

Maps Provided By:



© AgriData, Inc. 2021

www.AgriDataInc.com

Map Center: 46.800146, -102.501450

0ft 857ft 1714ft

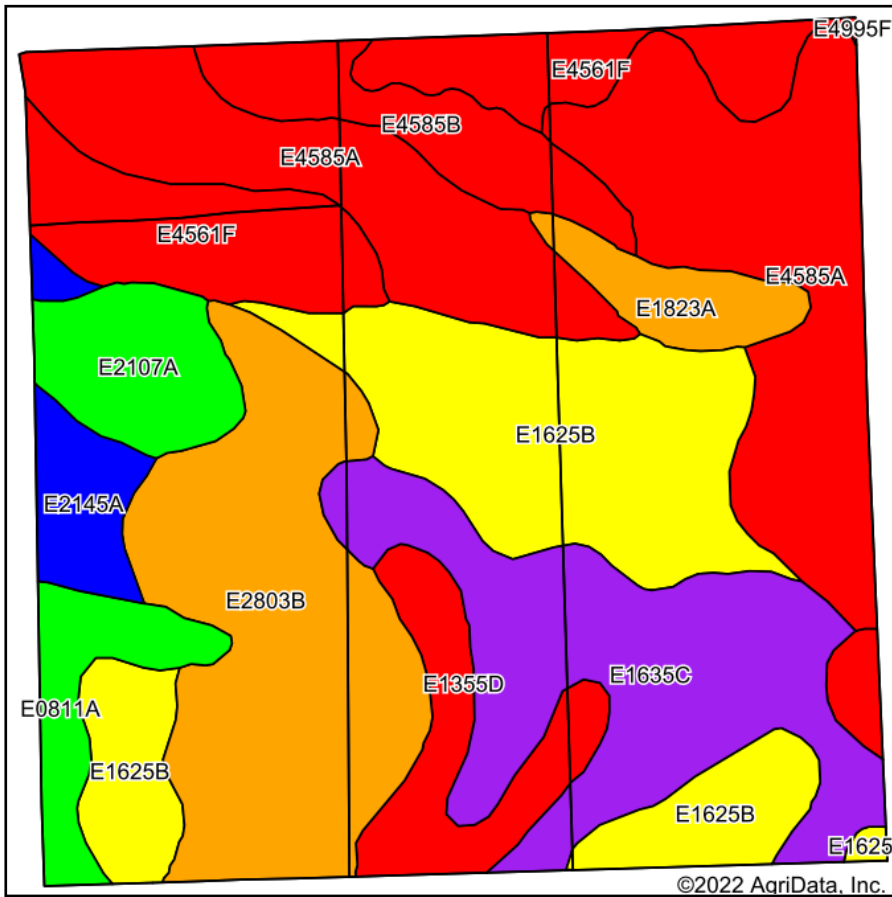
2-138N-94W
Stark County
North Dakota



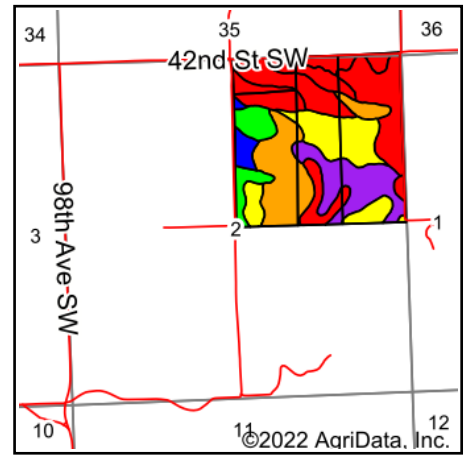
6/14/2022

Field borders provided by Farm Service Agency as of 5/21/2008.

Soils Map



Soils data provided by USDA and NRCS.



State: **North Dakota**
 County: **Stark**
 Location: **2-138N-94W**
 Township: **East Stark**
 Acres: **155.74**
 Date: **6/14/2022**



WHITETAIL PROPERTIES REAL ESTATE
 HUNTING | RANCH | FARM | TIMBER

Maps Provided By:



Area Symbol: ND089, Soil Area Version: 21

Code	Soil Description	Acres	Percent of field	PI Legend	Productivity Index
E4585A	Manning fine sandy loam, 0 to 2 percent slopes	33.68	21.6%		47
E1625B	Vebar-Parshall fine sandy loams, 3 to 6 percent slopes	27.72	17.8%		63
E2803B	Amor-Shambo loams, 3 to 6 percent slopes	24.17	15.5%		76
E1635C	Vebar-Tally fine sandy loams, 6 to 9 percent slopes	21.60	13.9%		51
E4561F	Manning-Schaller-Wabek complex, 6 to 35 percent slopes	15.96	10.2%		26
E1355D	Vebar-Flasher-Tally complex, 9 to 15 percent slopes	6.95	4.5%		32
E4585B	Manning fine sandy loam, 2 to 6 percent slopes	6.70	4.3%		45
E2107A	Arnegard loam, 0 to 2 percent slopes	6.16	4.0%		97
E0811A	Grail silty clay loam, 0 to 2 percent slopes	4.78	3.1%		96
E2145A	Shambo loam, 0 to 2 percent slopes	4.21	2.7%		87
E1823A	Parshall fine sandy loam, 0 to 2 percent slopes	3.81	2.4%		71
Weighted Average					57.1

Soils data provided by USDA and NRCS.