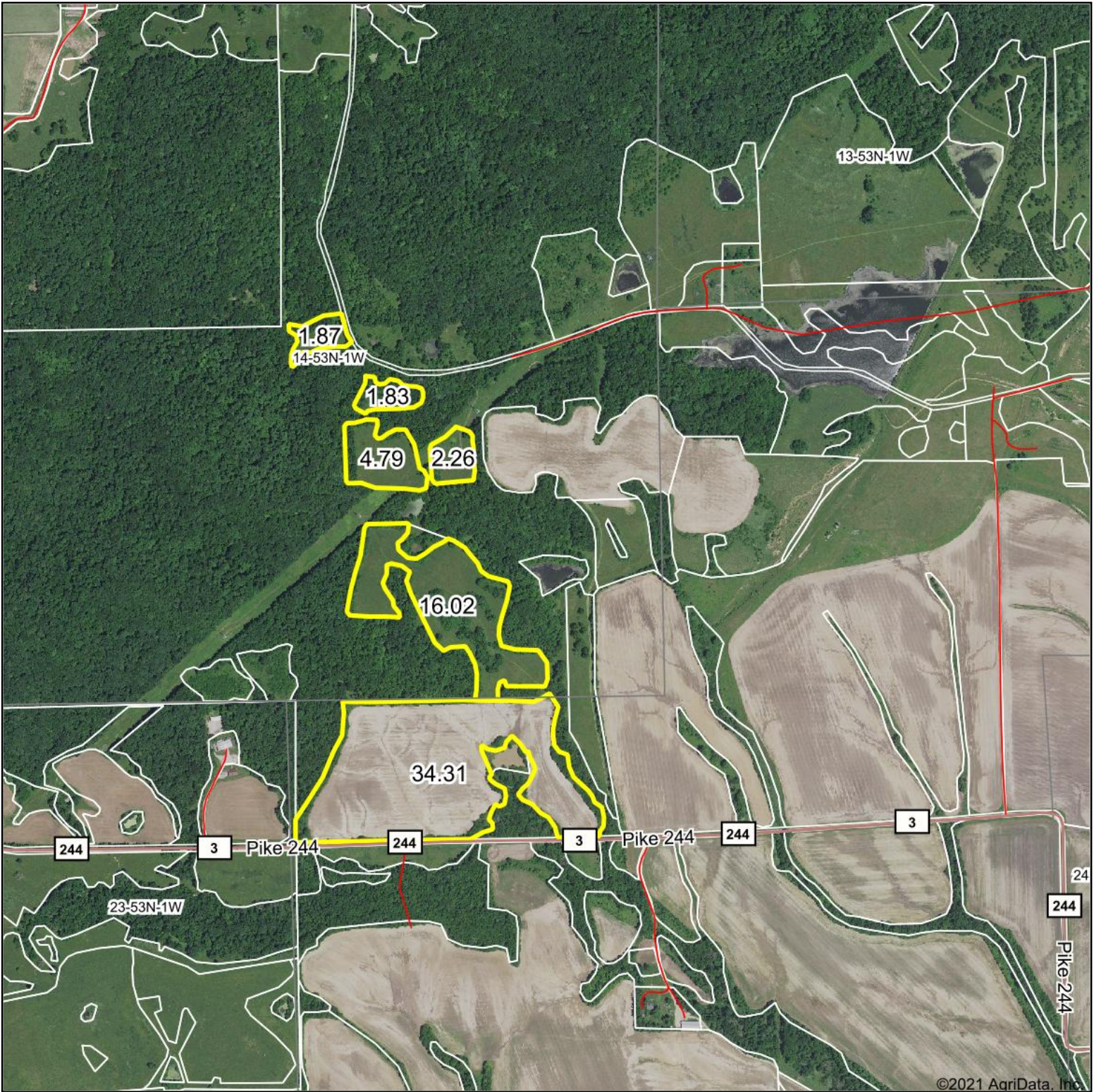
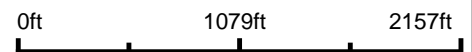


TRACT 1 Aerial Map



Map Center: 39° 21.6232', -90° 58.3253'



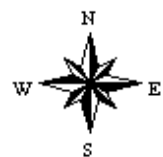
WHITETAIL PROPERTIES REAL ESTATE
HUNTING | RANCH | FARM | TIMBER

Maps Provided By:



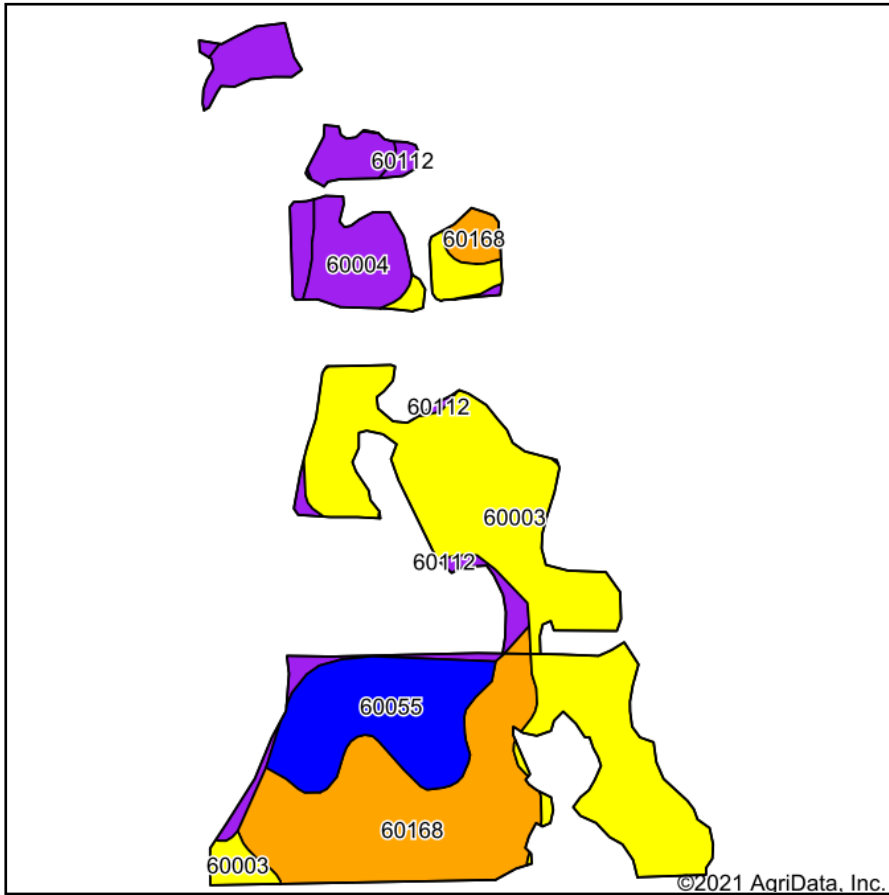
© AgriData, Inc. 2021 www.AgriDataInc.com

14-53N-1W
Pike County
Missouri

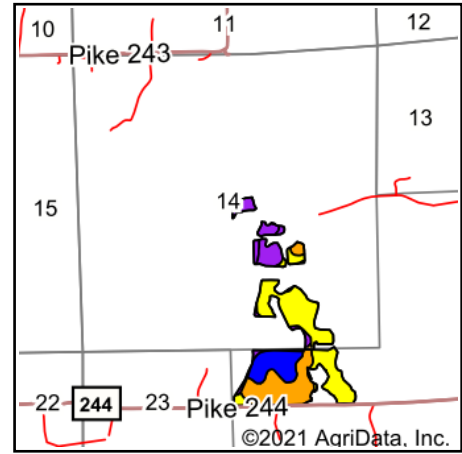


5/19/2021

TRACT 1 Soils Map



Soils data provided by USDA and NRCS.



State: **Missouri**
 County: **Pike**
 Location: **14-53N-1W**
 Township: **Calumet**
 Acres: **61.08**
 Date: **5/19/2021**



WHITETAIL PROPERTIES REAL ESTATE
 HUNTING | RANCH | FARM | TIMBER

Maps Provided By:



© AgriData, Inc. 2021

www.AgriDataInc.com



Area Symbol: MO163, Soil Area Version: 22

Code	Soil Description	Acres	Percent of field	Non-Irr Class Legend	Non-Irr Class *c	*n NCCPI Overall	*n NCCPI Corn	*n NCCPI Small Grains	*n NCCPI Soybeans	*n NCCPI Cotton
60003	Menfro silt loam, 9 to 14 percent slopes, eroded	25.57	41.9%	Yellow	IVe	79	79	65	64	0
60168	Menfro silt loam, 5 to 9 percent slopes, eroded	16.30	26.7%	Orange	IIIe	83	83	68	67	0
60055	Winfield silt loam, 2 to 5 percent slopes	8.79	14.4%	Blue	IIe	87	87	75	75	3
60004	Menfro silt loam, 14 to 20 percent slopes, eroded	6.95	11.4%	Purple	VIe	70	70	58	55	3
60112	Goss very gravelly silt loam, 14 to 45 percent slopes	3.47	5.7%	Purple	VIIe	15	15	12	7	0
Weighted Average						*n 76.6	*n 76.6	*n 63.4	*n 62.1	*n 0.8

*n: The aggregation method is "Weighted Average using all components"

*c: Using Capabilities Class Dominant Condition Aggregation Method

Soils data provided by USDA and NRCS.

TRACT 2 Aerial Map



Map Center: 39° 22.0964', -90° 58.587'



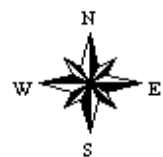
WHITETAIL PROPERTIES REAL ESTATE
HUNTING | RANCH | FARM | TIMBER

Maps Provided By:



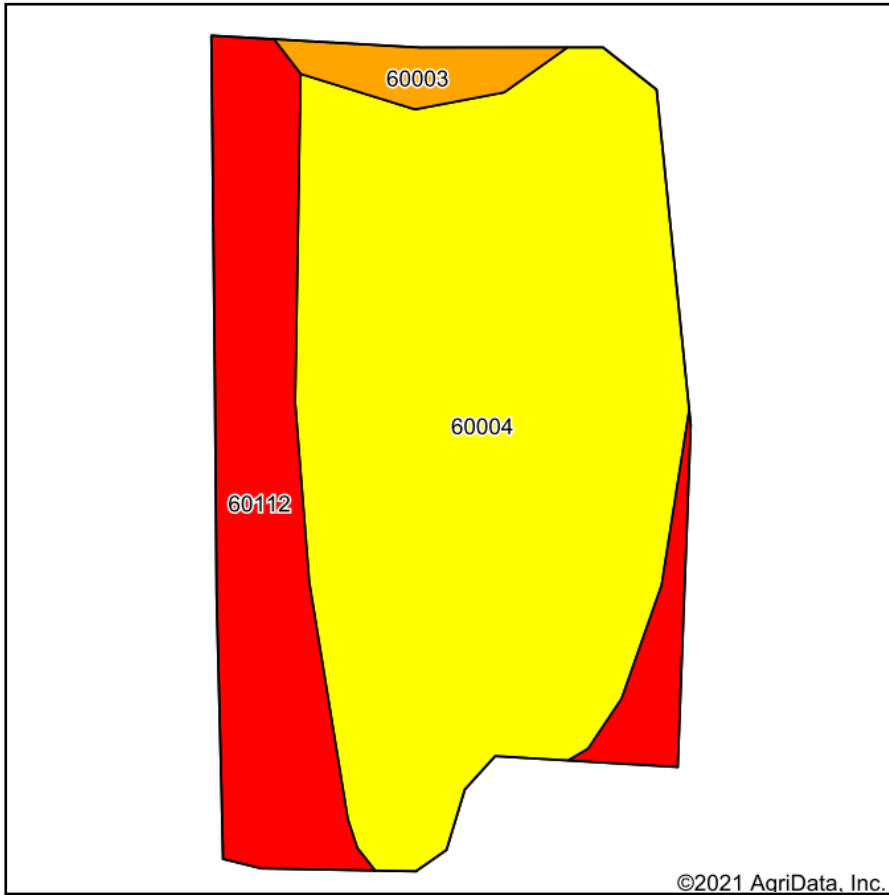
© AgriData, Inc. 2021 www.AgriDataInc.com

14-53N-1W
Pike County
Missouri

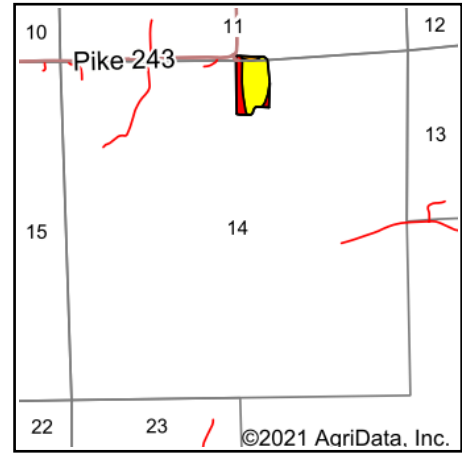


7/19/2021

TRACT 2 Soils Map



Soils data provided by USDA and NRCS.



State: **Missouri**
 County: **Pike**
 Location: **14-53N-1W**
 Township: **Calumet**
 Acres: **9.74**
 Date: **7/19/2021**



WHITETAIL PROPERTIES REAL ESTATE
 HUNTING | RANCH | FARM | TIMBER

Maps Provided By:



© AgriData, Inc. 2021

www.AgriDataInc.com



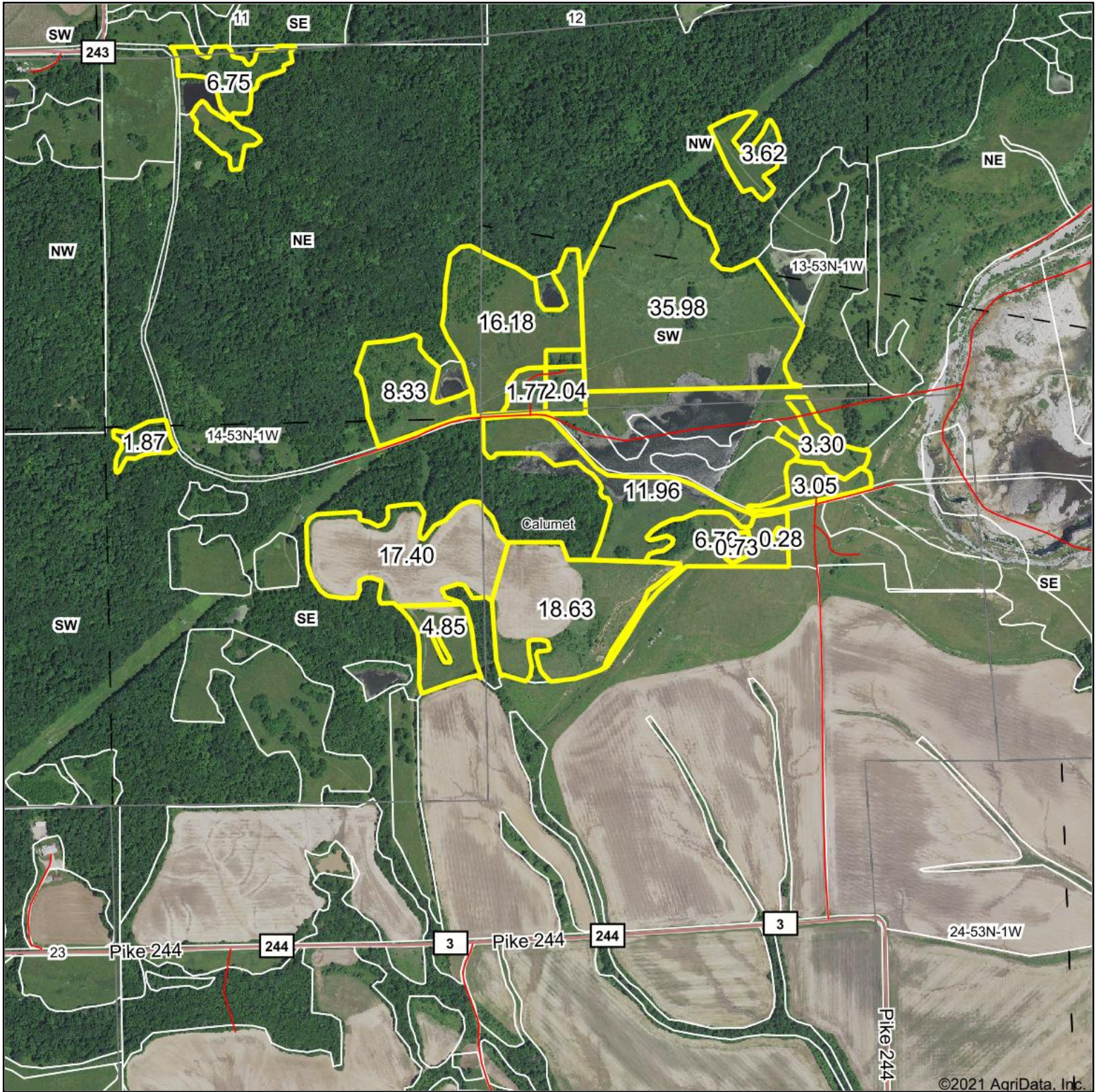
Area Symbol: MO163, Soil Area Version: 22

Code	Soil Description	Acres	Percent of field	NCCPI Overall Legend	*n NCCPI Overall	*n NCCPI Corn	*n NCCPI Small Grains	*n NCCPI Soybeans	*n NCCPI Cotton
60004	Menfro silt loam, 14 to 20 percent slopes, eroded	6.93	71.1%		70	70	58	55	3
60112	Goss very gravelly silt loam, 14 to 45 percent slopes	2.48	25.5%		15	15	12	7	0
60003	Menfro silt loam, 9 to 14 percent slopes, eroded	0.33	3.4%		79	79	65	64	0
Weighted Average					*n 56.3	*n 56.3	*n 46.5	*n 43.1	*n 2.1

*n: The aggregation method is "Weighted Average using all components"

Soils data provided by USDA and NRCS.

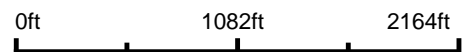
TRACT 3 Aerial Map



©2021 AgriData, Inc.



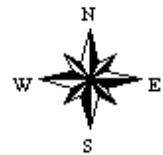
Map Center: 39° 21.7395', -90° 58.0594'



WHITETAIL PROPERTIES REAL ESTATE
HUNTING | RANCH | FARM | TIMBER

Pike County
Missouri

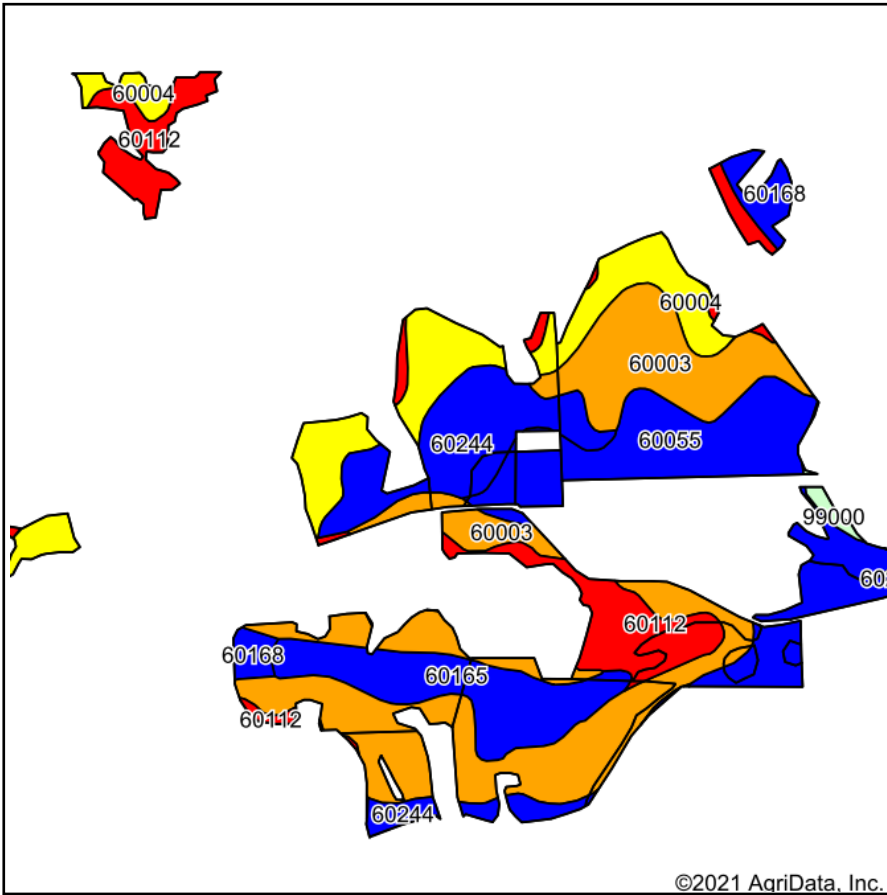
Maps Provided By:
 **surety**[®]
CUSTOMIZED ONLINE MAPPING
© AgriData, Inc. 2021 www.AgriDataInc.com



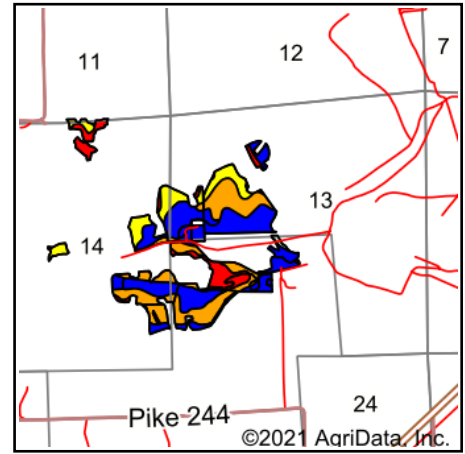
7/19/2021

Field borders provided by Farm Service Agency as of 5/21/2008.

TRACT 3 Soils Map



Soils data provided by USDA and NRCS.



State: **Missouri**
 County: **Pike**
 Location: **39° 21.7395', -90° 58.0594'**
 Township: **Calumet**
 Acres: **143.5**
 Date: **7/19/2021**



WHITETAIL PROPERTIES REAL ESTATE
 HUNTING | RANCH | FARM | TIMBER

Maps Provided By:

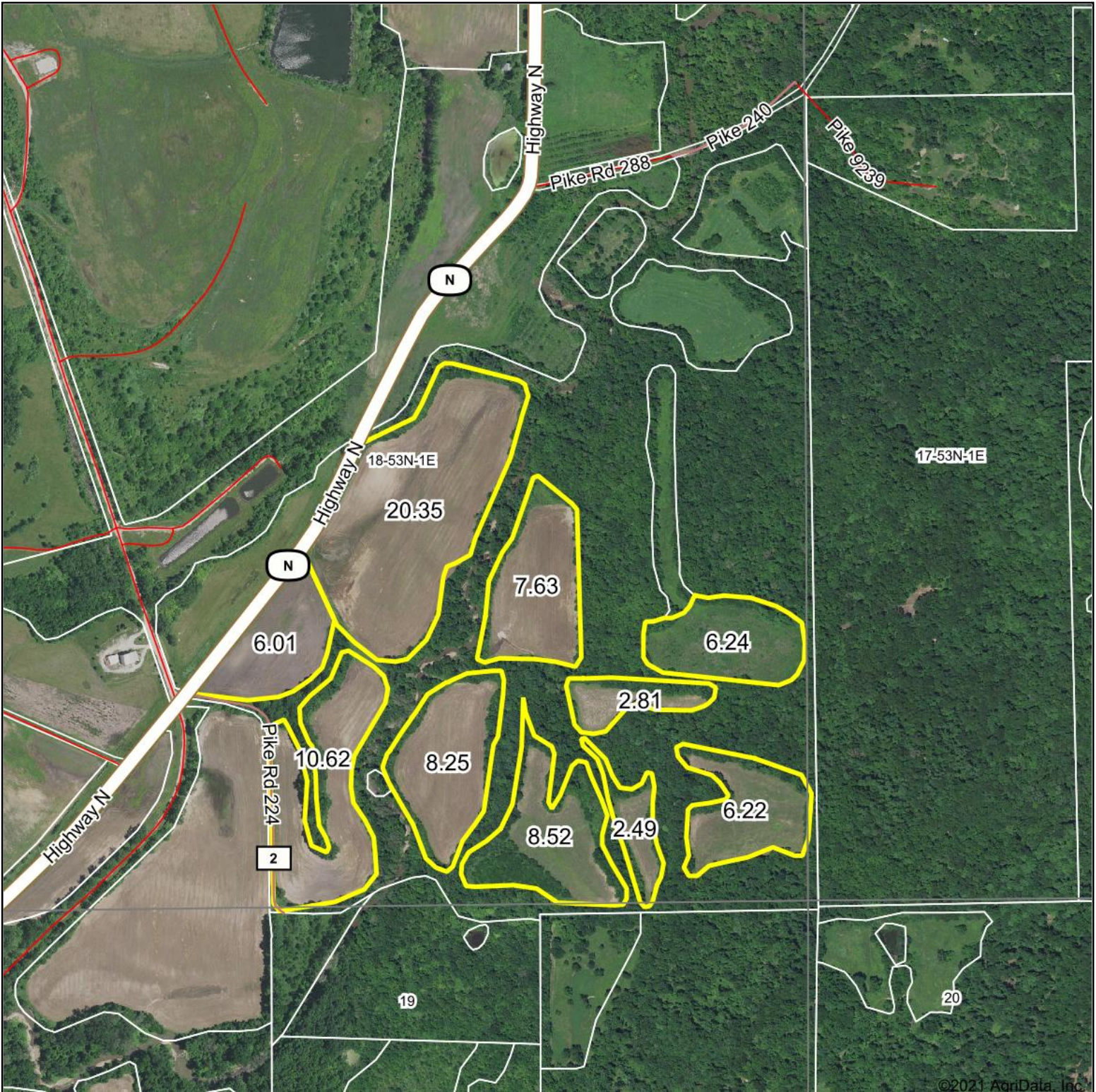


Area Symbol: MO163, Soil Area Version: 22

Code	Soil Description	Acres	Percent of field	NCCPI Overall Legend	*n NCCPI Overall	*n NCCPI Corn	*n NCCPI Small Grains	*n NCCPI Soybeans	*n NCCPI Cotton
60003	Menfro silt loam, 9 to 14 percent slopes, eroded	44.98	31.3%		79	79	65	64	0
60055	Winfield silt loam, 2 to 5 percent slopes	25.99	18.1%		87	87	75	75	3
60004	Menfro silt loam, 14 to 20 percent slopes, eroded	20.10	14.0%		70	70	58	55	3
60244	Winfield silt loam, 5 to 10 percent slopes, eroded	16.92	11.8%		82	82	69	67	0
60112	Goss very gravelly silt loam, 14 to 45 percent slopes	16.77	11.7%		15	15	12	7	0
60165	Menfro silt loam, 2 to 5 percent slopes	14.09	9.8%		87	87	77	79	0
60168	Menfro silt loam, 5 to 9 percent slopes, eroded	3.91	2.7%		83	83	68	67	0
99000	Pits, quarry	0.74	0.5%						
Weighted Average					*n 72.5	*n 72.5	*n 61	*n 59.6	*n 1

*n: The aggregation method is "Weighted Average using all components"
 Soils data provided by USDA and NRCS.

TRACT 4 Aerial Map



©2021 AgriData, Inc.

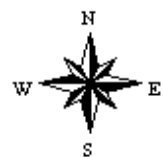


Map Center: 39° 21.7667', -90° 56.1253'



WHITETAIL PROPERTIES REAL ESTATE
HUNTING | RANCH | FARM | TIMBER

18-53N-1E
Pike County
Missouri

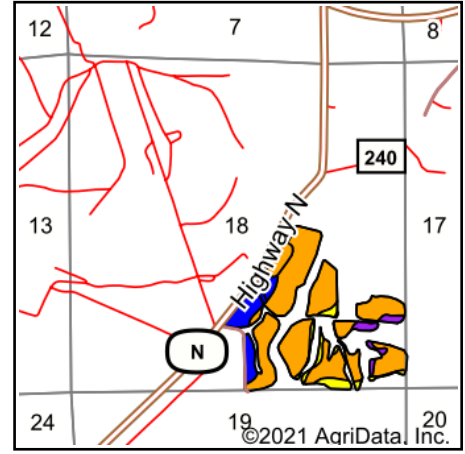
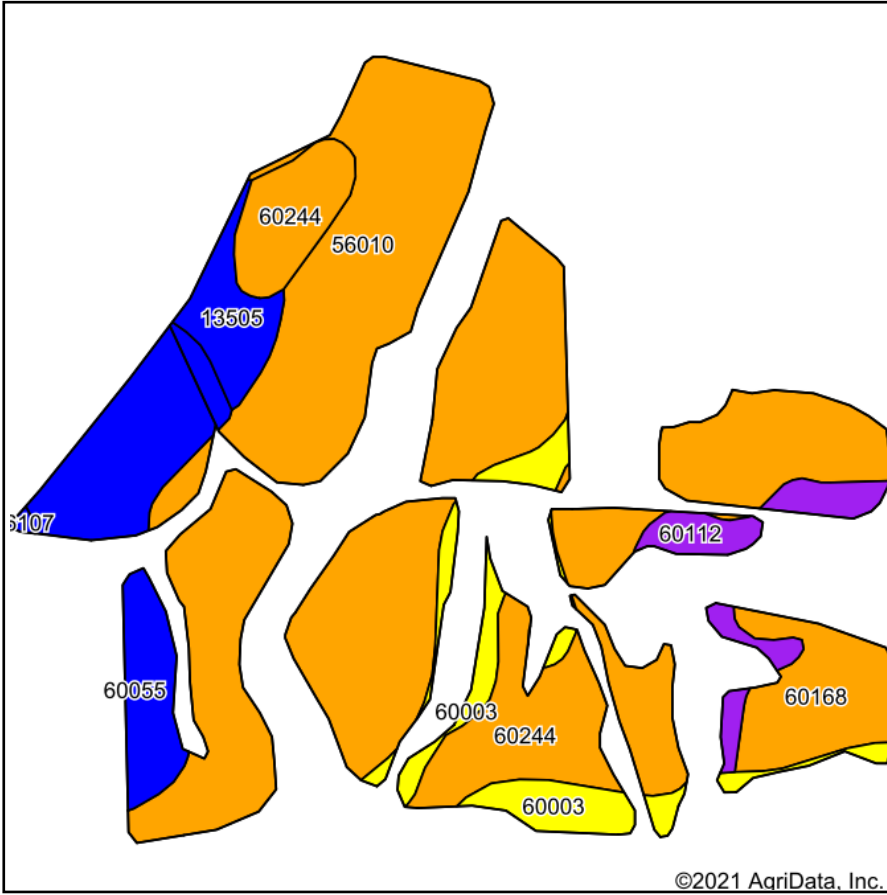


Maps Provided By:
 **surety**[®]
CUSTOMIZED ONLINE MAPPING
© AgriData, Inc. 2021 www.AgriDataInc.com

5/19/2021

Field borders provided by Farm Service Agency as of 5/21/2008.

TRACT 4 Soils Map



State: **Missouri**
 County: **Pike**
 Location: **18-53N-1E**
 Township: **Calumet**
 Acres: **79.14**
 Date: **5/19/2021**



WHITETAIL PROPERTIES REAL ESTATE
 HUNTING | RANCH | FARM | TIMBER

Maps Provided By:



Soils data provided by USDA and NRCS.

Area Symbol: MO163, Soil Area Version: 22

Code	Soil Description	Acres	Percent of field	Non-Irr Class Legend	Non-Irr Class *c	*n NCCPI Overall	*n NCCPI Corn	*n NCCPI Small Grains	*n NCCPI Soybeans	*n NCCPI Cotton
56010	Belknap silt loam, 0 to 2 percent slopes, frequently flooded	36.89	46.6%		IIIw	70	69	60	69	0
60244	Winfield silt loam, 5 to 10 percent slopes, eroded	17.76	22.4%		IIIe	82	82	69	67	0
60055	Winfield silt loam, 2 to 5 percent slopes	8.73	11.0%		Ile	87	87	75	75	3
60003	Menfro silt loam, 9 to 14 percent slopes, eroded	5.21	6.6%		IVe	79	79	65	64	0
60168	Menfro silt loam, 5 to 9 percent slopes, eroded	4.83	6.1%		IIIe	83	83	68	67	0
60112	Goss very gravelly silt loam, 14 to 45 percent slopes	3.03	3.8%		VIIe	15	15	12	7	0
13505	Blackoar silt loam, 0 to 2 percent slopes, occasionally flooded	2.58	3.3%		IIw	81	70	65	80	0
66107	Tice silt loam, 0 to 2 percent slopes, occasionally flooded	0.11	0.1%		IIw	74	74	67	71	0
Weighted Average						*n 74.2	*n 73.4	*n 62.8	*n 66.7	*n 0.3

*n: The aggregation method is "Weighted Average using all components"

*c: Using Capabilities Class Dominant Condition Aggregation Method

Soils data provided by USDA and NRCS.

TRACT 5 Aerial Map



©2021 AgriData, Inc.



Map Center: 39° 21.3813', -90° 56.7226'



WHITETAIL PROPERTIES REAL ESTATE
HUNTING | RANCH | FARM | TIMBER

19-53N-1E
Pike County
Missouri

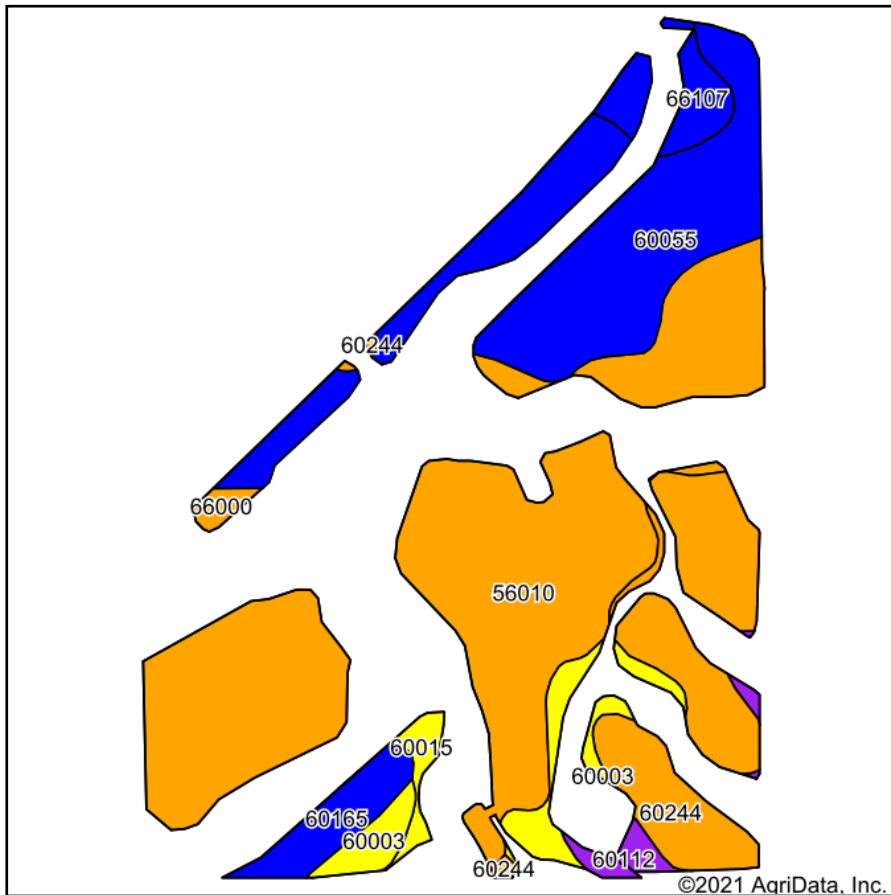


Maps Provided By:
 **surety**[®]
CUSTOMIZED ONLINE MAPPING
© AgriData, Inc. 2021 www.AgriDataInc.com

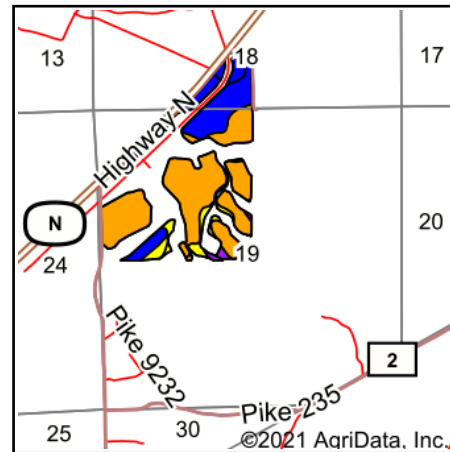
5/19/2021

Field borders provided by Farm Service Agency as of 5/21/2008.

TRACT 5 Soils Map



Soils data provided by USDA and NRCS.

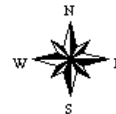


State: **Missouri**
 County: **Pike**
 Location: **19-53N-1E**
 Township: **Calumet**
 Acres: **99.06**
 Date: **5/19/2021**



WHITETAIL PROPERTIES REAL ESTATE
 HUNTING | RANCH | FARM | TIMBER

Maps Provided By:



Area Symbol: MO163, Soil Area Version: 22

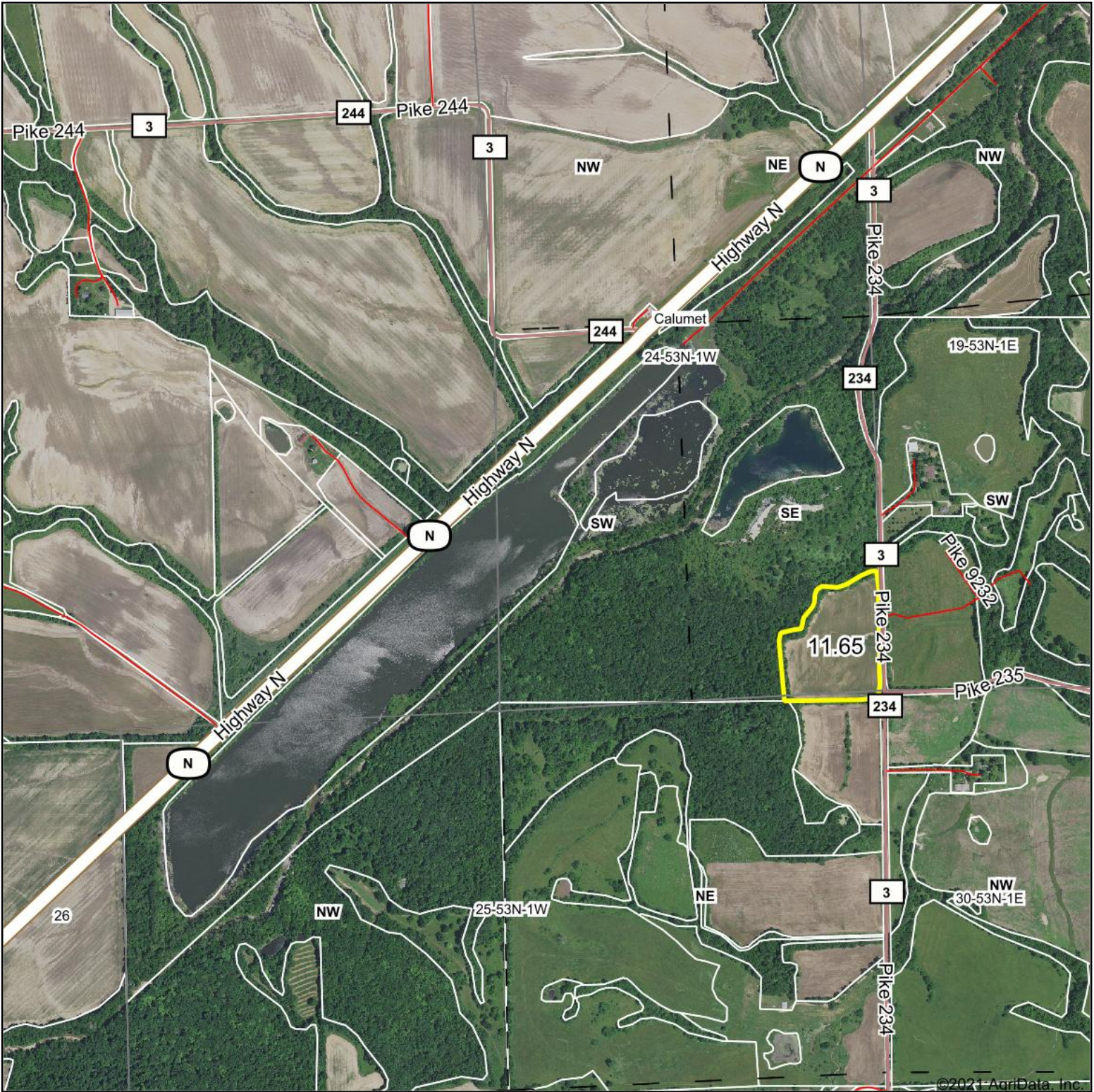
Code	Soil Description	Acres	Percent of field	Non-Irr Class Legend	Non-Irr Class *c	*n NCCPI Overall	*n NCCPI Corn	*n NCCPI Small Grains	*n NCCPI Soybeans	*n NCCPI Cotton
56010	Belknap silt loam, 0 to 2 percent slopes, frequently flooded	45.36	45.8%		IIIw	70	69	60	69	0
60055	Winfield silt loam, 2 to 5 percent slopes	23.17	23.4%		Ile	87	87	75	75	3
60244	Winfield silt loam, 5 to 10 percent slopes, eroded	15.32	15.5%		IIIe	82	82	69	67	0
60003	Menfro silt loam, 9 to 14 percent slopes, eroded	4.97	5.0%		IVe	79	79	65	64	0
60165	Menfro silt loam, 2 to 5 percent slopes	3.59	3.6%		Ile	87	87	77	79	0
66107	Tice silt loam, 0 to 2 percent slopes, occasionally flooded	3.24	3.3%		IIw	74	74	67	71	0
60112	Goss very gravelly silt loam, 14 to 45 percent slopes	1.49	1.5%		VIIe	15	15	12	7	0
60015	Goss gravelly silt loam, 9 to 14 percent slopes, eroded	1.22	1.2%		IVe	54	54	43	35	0
66000	Moniteau silt loam, 0 to 2 percent slopes, occasionally flooded	0.70	0.7%		IIIw	90	90	66	81	0
Weighted Average						*n 76.1	*n 75.7	*n 65.1	*n 69	*n 0.7

*n: The aggregation method is "Weighted Average using all components"

*c: Using Capabilities Class Dominant Condition Aggregation Method

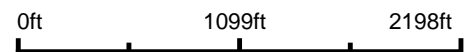
Soils data provided by USDA and NRCS.

TRACT 6 Aerial Map



©2021 AgriData, Inc.

Map Center: 39° 20.7898', -90° 57.5032'



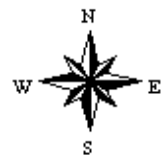
WHITETAIL PROPERTIES REAL ESTATE
HUNTING | RANCH | FARM | TIMBER

Maps Provided By:



© AgriData, Inc. 2021 www.AgriDataInc.com

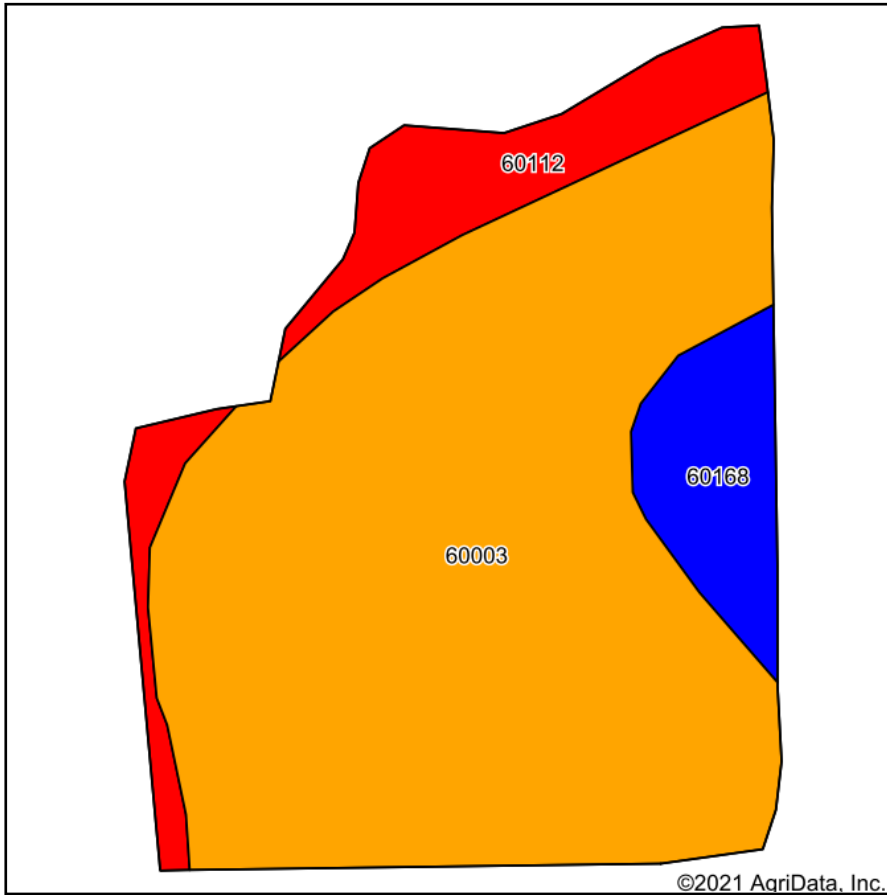
24-53N-1W
Pike County
Missouri



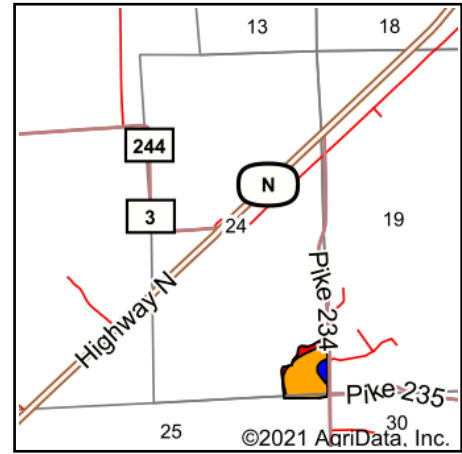
7/20/2021

Field borders provided by Farm Service Agency as of 5/21/2008.

TRACT 6 Soils Map



Soils data provided by USDA and NRCS.



State: **Missouri**
 County: **Pike**
 Location: **24-53N-1W**
 Township: **Calumet**
 Acres: **11.65**
 Date: **7/20/2021**



WHITETAIL PROPERTIES REAL ESTATE
 HUNTING | RANCH | FARM | TIMBER

Maps Provided By:



© AgriData, Inc. 2021

www.AgriDataInc.com



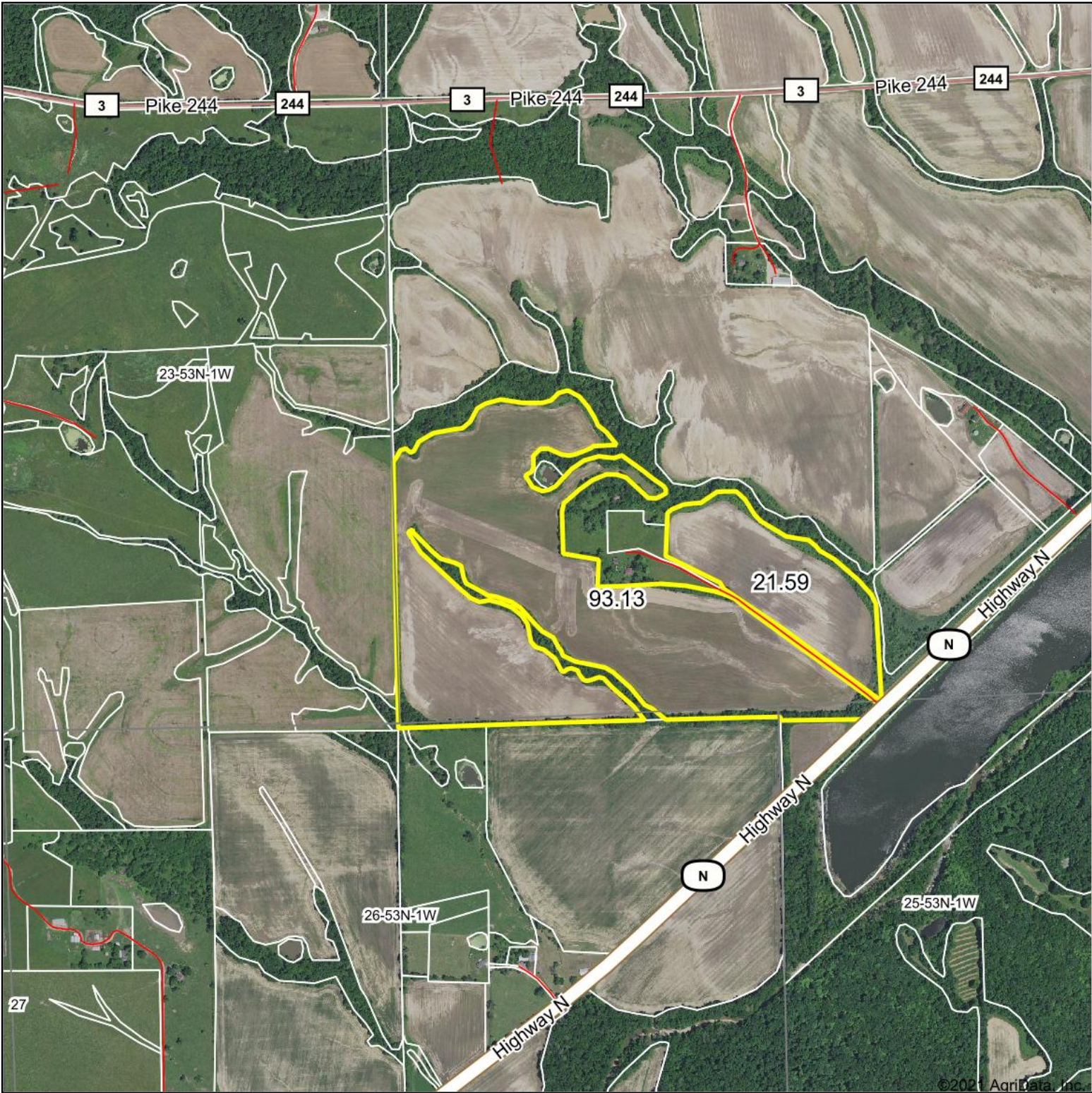
Area Symbol: MO163, Soil Area Version: 22

Code	Soil Description	Acres	Percent of field	NCCPI Overall Legend	*n NCCPI Overall	*n NCCPI Corn	*n NCCPI Small Grains	*n NCCPI Soybeans
60003	Menfro silt loam, 9 to 14 percent slopes, eroded	9.20	79.0%		79	79	65	64
60112	Goss very gravelly silt loam, 14 to 45 percent slopes	1.49	12.8%		15	15	12	7
60168	Menfro silt loam, 5 to 9 percent slopes, eroded	0.96	8.2%		83	83	68	67
Weighted Average					*n 71.1	*n 71.1	*n 58.5	*n 57

*n: The aggregation method is "Weighted Average using all components"

Soils data provided by USDA and NRCS.

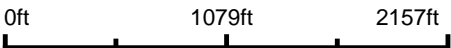
TRACT 7 Aerial Map



©2021 AgriData, Inc.

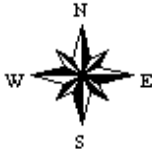


Map Center: 39° 20.7753', -90° 58.4822'



WHITETAIL PROPERTIES REAL ESTATE
HUNTING | RANCH | FARM | TIMBER

**Pike County
Missouri**



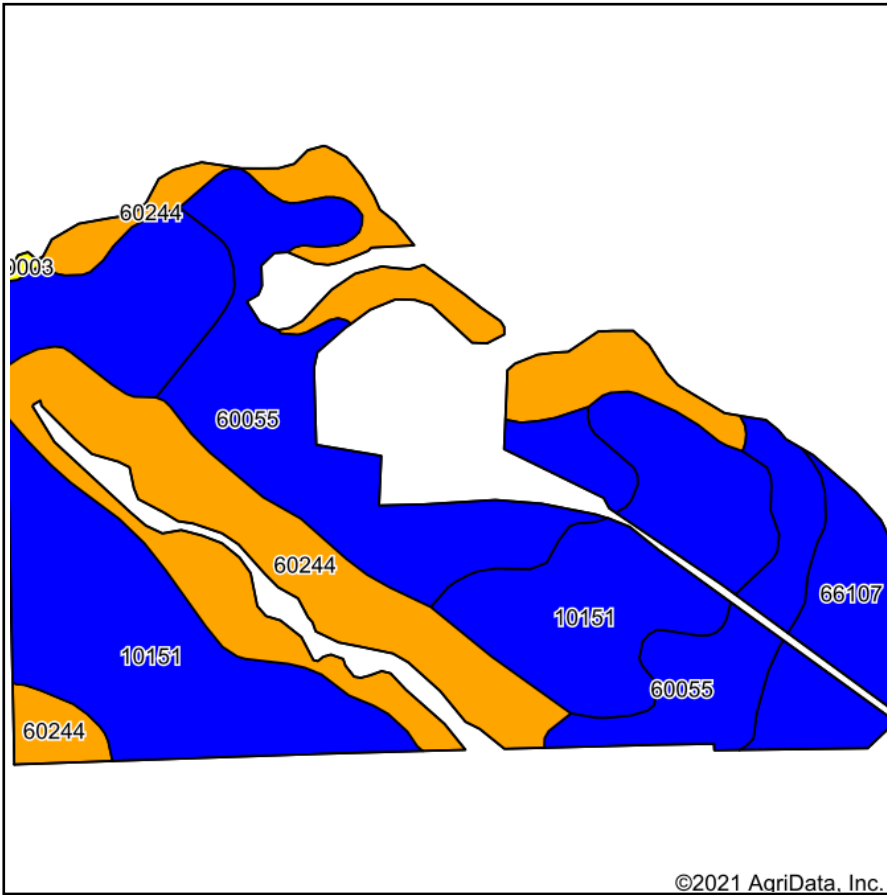
Maps Provided By:
surety
CUSTOMIZED ONLINE MAPPING

© AgriData, Inc. 2021 www.AgriDataInc.com

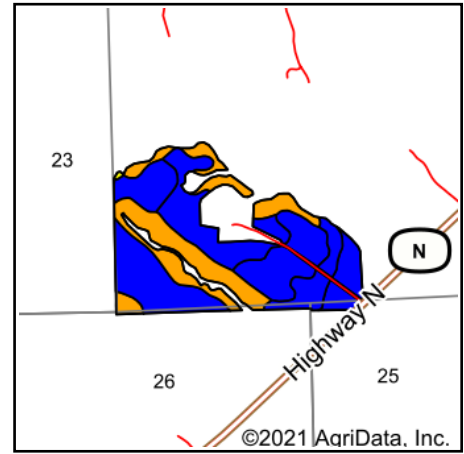
5/19/2021

Field borders provided by Farm Service Agency as of 5/21/2008.

TRACT 7 Soils Map



Soils data provided by USDA and NRCS.



State: **Missouri**
 County: **Pike**
 Location: **39° 20.7753', -90° 58.4822'**
 Township: **Calumet**
 Acres: **114.72**
 Date: **5/19/2021**



WHITETAIL PROPERTIES REAL ESTATE
 HUNTING | RANCH | FARM | TIMBER

Maps Provided By:



© AgriData, Inc. 2021

www.AgriDataInc.com



Area Symbol: MO163, Soil Area Version: 22

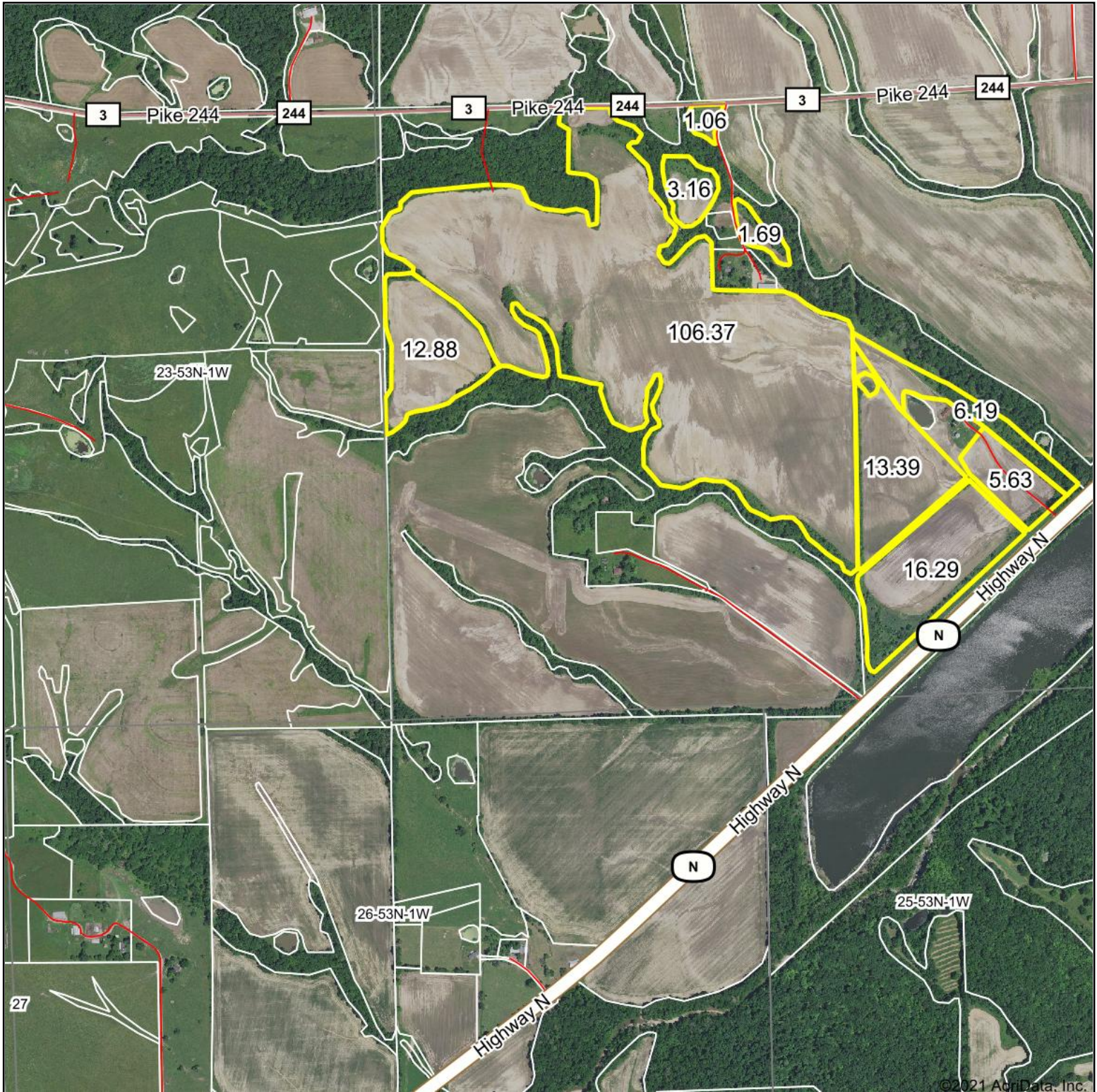
Code	Soil Description	Acres	Percent of field	Non-Irr Class Legend	Non-Irr Class *c	*n NCCPI Overall	*n NCCPI Corn	*n NCCPI Small Grains	*n NCCPI Soybeans	*n NCCPI Cotton
10151	Wakenda silt loam, 2 to 5 percent slopes	45.24	39.4%		Ile	88	88	75	78	0
60244	Winfield silt loam, 5 to 10 percent slopes, eroded	32.30	28.2%		IIle	82	82	69	67	0
60055	Winfield silt loam, 2 to 5 percent slopes	28.79	25.1%		Ile	87	87	75	75	3
66107	Tice silt loam, 0 to 2 percent slopes, occasionally flooded	8.20	7.1%		IIw	74	74	67	71	0
60003	Menfro silt loam, 9 to 14 percent slopes, eroded	0.19	0.2%		IVe	79	79	65	64	0
Weighted Average						*n 85	*n 85	*n 72.7	*n 73.6	*n 0.8

*n: The aggregation method is "Weighted Average using all components"

*c: Using Capabilities Class Dominant Condition Aggregation Method

Soils data provided by USDA and NRCS.

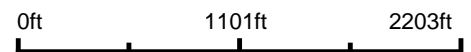
TRACT 8 Aerial Map



©2021 AgriData, Inc.

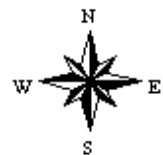


Map Center: 39° 20.7753', -90° 58.4652'



WHITETAIL PROPERTIES REAL ESTATE
HUNTING | RANCH | FARM | TIMBER

Pike County
Missouri

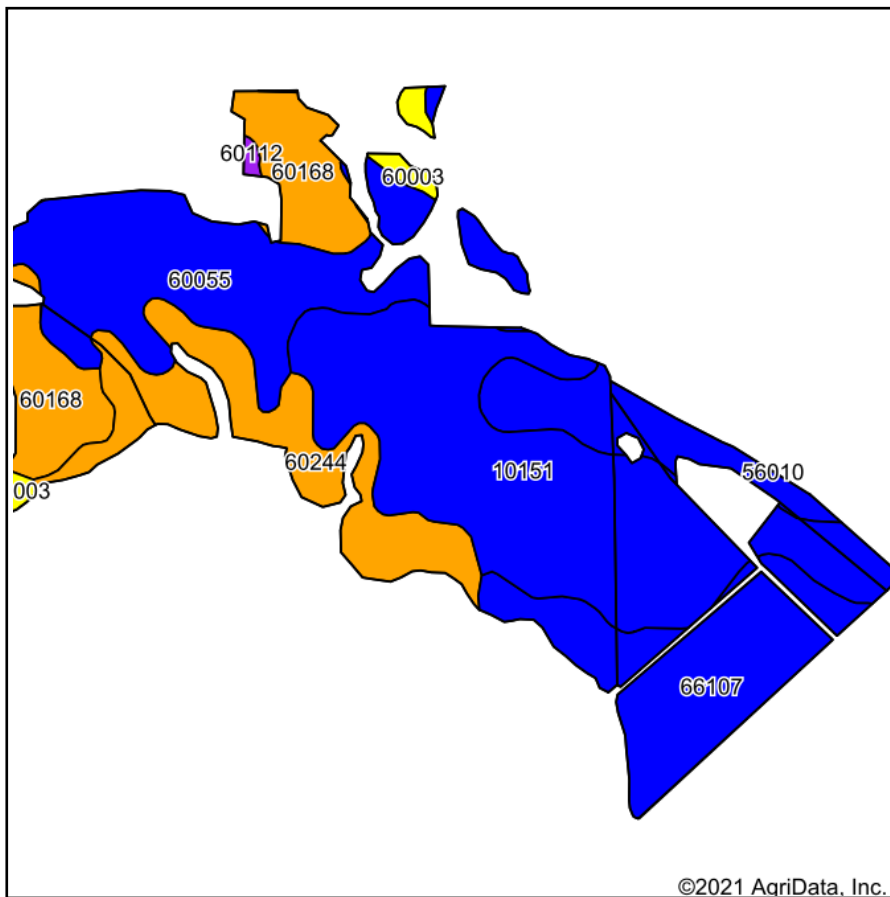


Maps Provided By:
 **surety**[®]
CUSTOMIZED ONLINE MAPPING
© AgriData, Inc. 2021 www.AgriDataInc.com

5/19/2021

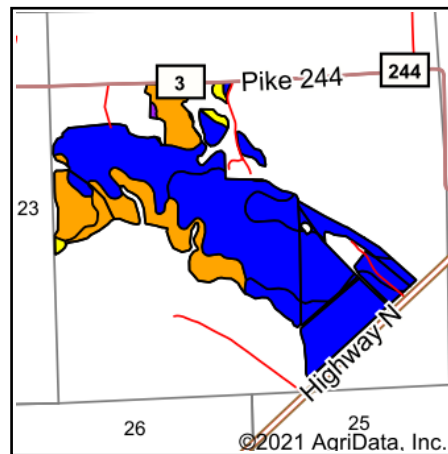
Field borders provided by Farm Service Agency as of 5/21/2008.

TRACT 8 Soils Map



Soils data provided by USDA and NRCS.

©2021 AgriData, Inc.



State: **Missouri**
 County: **Pike**
 Location: **39° 20.7753', -90° 58.4652'**
 Township: **Calumet**
 Acres: **166.66**
 Date: **5/19/2021**



WHITETAIL PROPERTIES REAL ESTATE
 HUNTING | RANCH | FARM | TIMBER

Maps Provided By:



Area Symbol: MO163, Soil Area Version: 22

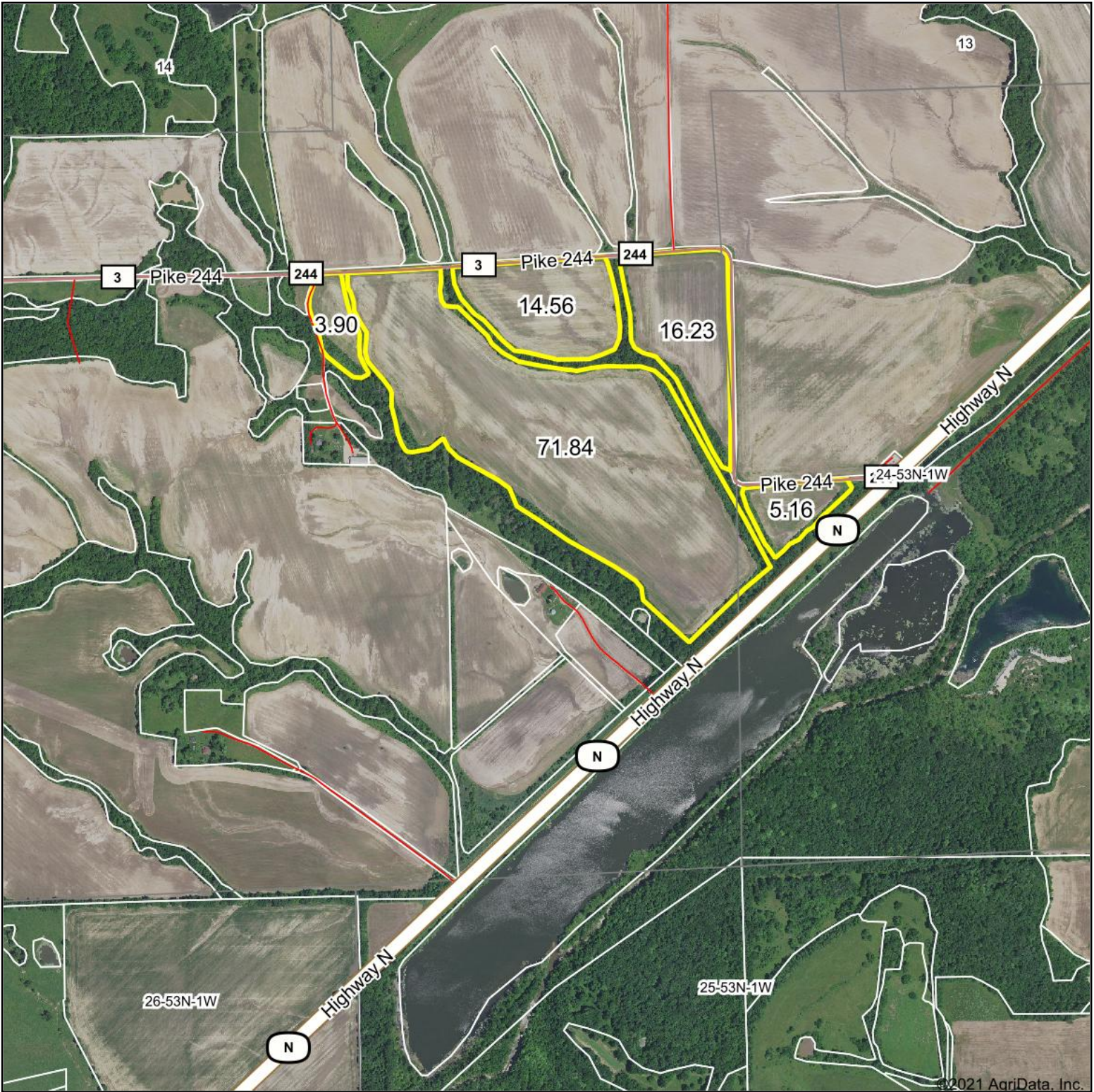
Code	Soil Description	Acres	Percent of field	Non-Irr Class Legend	Non-Irr Class *c	*n NCCPI Overall	*n NCCPI Corn	*n NCCPI Small Grains	*n NCCPI Soybeans	*n NCCPI Cotton
10151	Wakenda silt loam, 2 to 5 percent slopes	54.67	32.8%		Ile	88	88	75	78	0
60055	Winfield silt loam, 2 to 5 percent slopes	46.19	27.7%		Ile	87	87	75	75	3
66107	Tice silt loam, 0 to 2 percent slopes, occasionally flooded	24.69	14.8%		Ilw	74	74	67	71	0
60244	Winfield silt loam, 5 to 10 percent slopes, eroded	21.43	12.9%		IIIe	82	82	69	67	0
60168	Menfro silt loam, 5 to 9 percent slopes, eroded	17.04	10.2%		IIIe	83	83	68	67	0
60003	Menfro silt loam, 9 to 14 percent slopes, eroded	2.26	1.4%		IVe	79	79	65	64	0
60112	Goss very gravelly silt loam, 14 to 45 percent slopes	0.38	0.2%		VIIe	15	15	12	7	0
Weighted Average						*n 84.1	*n 84.1	*n 72	*n 73.2	*n 0.8

*n: The aggregation method is "Weighted Average using all components"

*c: Using Capabilities Class Dominant Condition Aggregation Method

Soils data provided by USDA and NRCS.

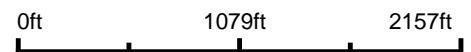
TRACT 9 Aerial Map



©2021 AgriData, Inc.

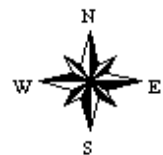


Map Center: 39° 20.9698', -90° 57.8558'



WHITETAIL PROPERTIES REAL ESTATE
HUNTING | RANCH | FARM | TIMBER

Pike County
Missouri

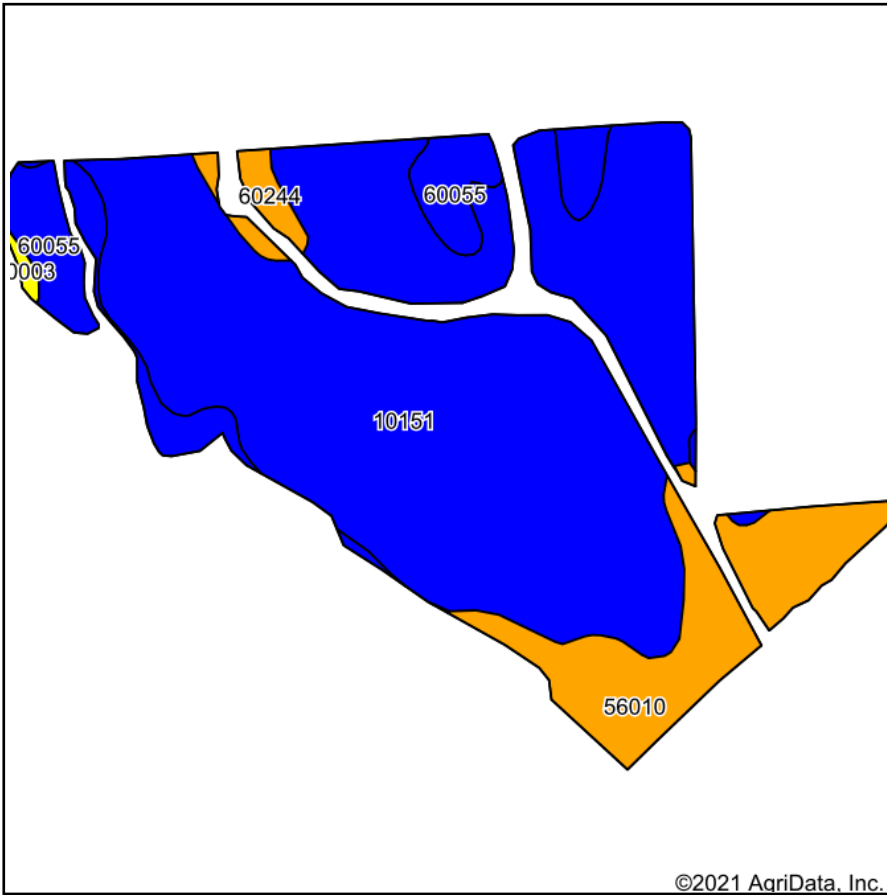


Maps Provided By:
 **surety**[®]
CUSTOMIZED ONLINE MAPPING
© AgriData, Inc. 2021 www.AgriDataInc.com

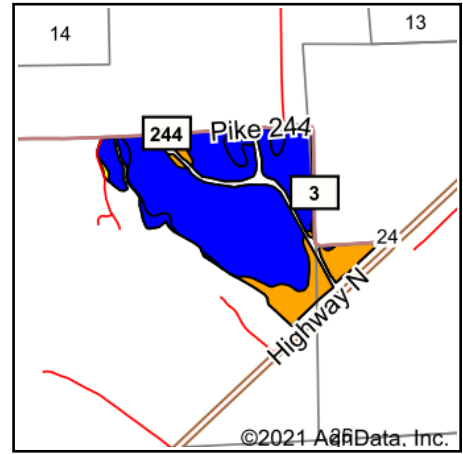
5/19/2021

Field borders provided by Farm Service Agency as of 5/21/2008.

TRACT 9 Soils Map



Soils data provided by USDA and NRCS.



State: **Missouri**
 County: **Pike**
 Location: **39° 20.9698', -90° 57.8558'**
 Township: **Calumet**
 Acres: **111.69**
 Date: **5/19/2021**



WHITETAIL PROPERTIES REAL ESTATE
 HUNTING | RANCH | FARM | TIMBER

Maps Provided By:



© AgriData, Inc. 2021

www.AgriDataInc.com



Area Symbol: MO163, Soil Area Version: 22

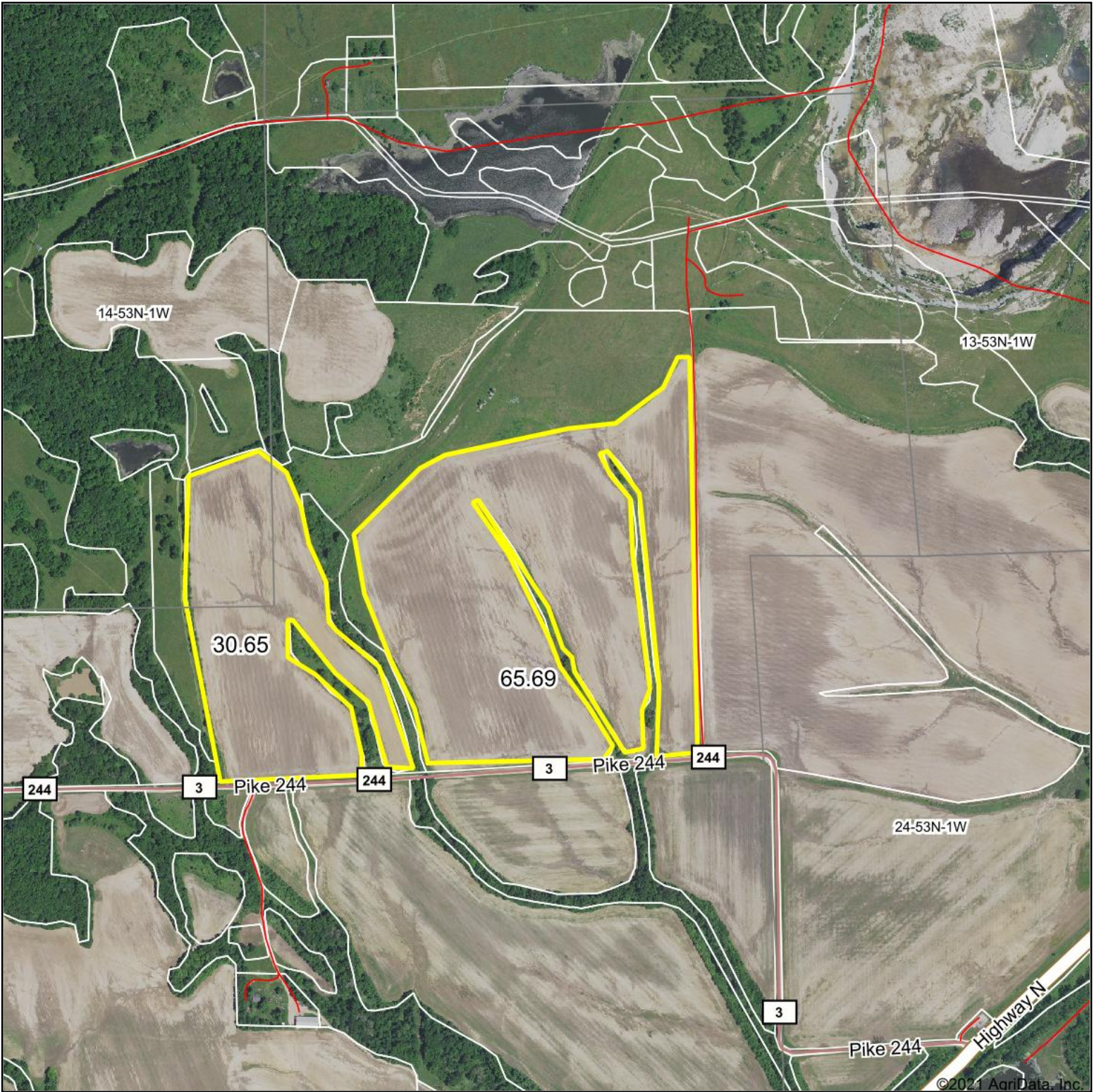
Code	Soil Description	Acres	Percent of field	Non-Irr Class Legend	Non-Irr Class *c	*n NCCPI Overall	*n NCCPI Corn	*n NCCPI Small Grains	*n NCCPI Soybeans	*n NCCPI Cotton
10151	Wakenda silt loam, 2 to 5 percent slopes	83.35	74.6%		Ile	88	88	75	78	0
56010	Belknap silt loam, 0 to 2 percent slopes, frequently flooded	14.86	13.3%		IIIw	70	69	60	69	0
60055	Winfield silt loam, 2 to 5 percent slopes	11.14	10.0%		Ile	87	87	75	75	3
60244	Winfield silt loam, 5 to 10 percent slopes, eroded	1.97	1.8%		IIIe	82	82	69	67	0
60003	Menfro silt loam, 9 to 14 percent slopes, eroded	0.37	0.3%		IVe	79	79	65	64	0
Weighted Average						*n 85.4	*n 85.2	*n 72.9	*n 76.3	*n 0.3

*n: The aggregation method is "Weighted Average using all components"

*c: Using Capabilities Class Dominant Condition Aggregation Method

Soils data provided by USDA and NRCS.

TRACT 10 Aerial Map



©2021 AgriData, Inc.



Map Center: 39° 21.4986', -90° 57.8366'



WHITETAIL PROPERTIES REAL ESTATE
HUNTING | RANCH | FARM | TIMBER

Pike County
Missouri

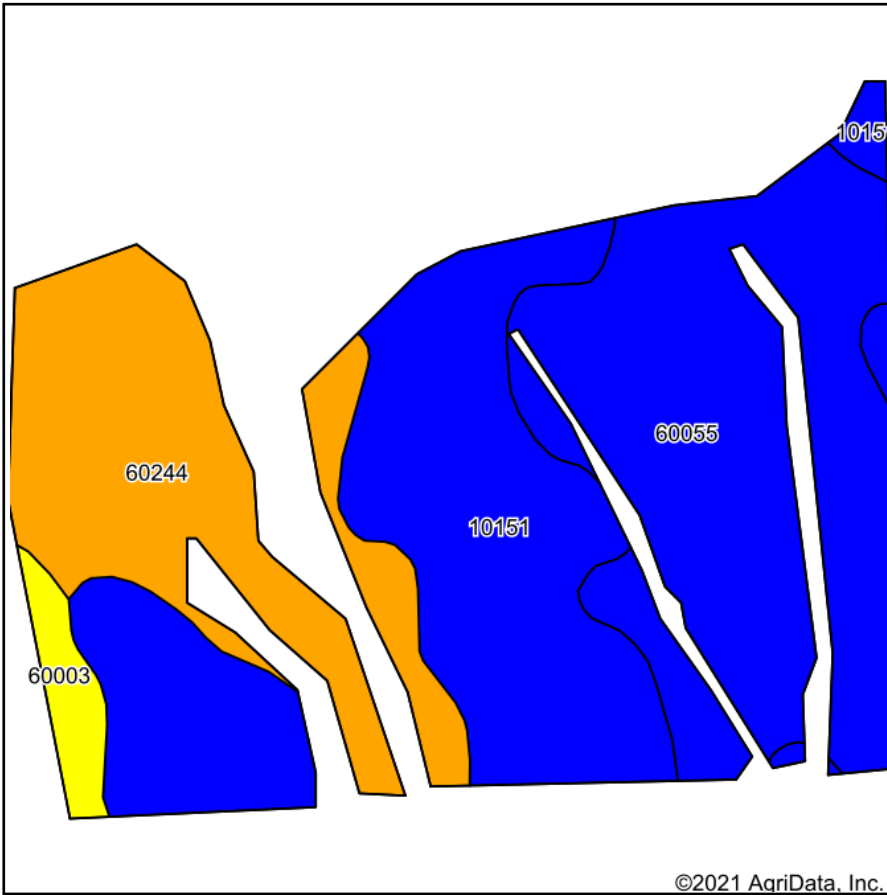


Maps Provided By:
 **surety**[®]
CUSTOMIZED ONLINE MAPPING
© AgriData, Inc. 2021 www.AgriDataInc.com

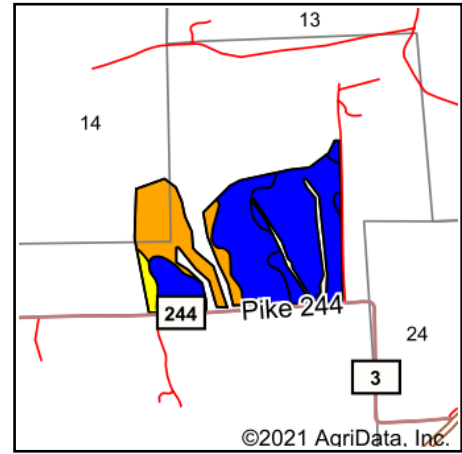
5/19/2021

Field borders provided by Farm Service Agency as of 5/21/2008.

TRACT 10 Soils Map



Soils data provided by USDA and NRCS.



State: **Missouri**
 County: **Pike**
 Location: **39° 21.4986', -90° 57.8366'**
 Township: **Calumet**
 Acres: **96.34**
 Date: **5/19/2021**



WHITETAIL PROPERTIES REAL ESTATE
 HUNTING | RANCH | FARM | TIMBER

Maps Provided By:



Area Symbol: MO163, Soil Area Version: 22

Code	Soil Description	Acres	Percent of field	Non-Irr Class Legend	Non-Irr Class *c	*n NCCPI Overall	*n NCCPI Corn	*n NCCPI Small Grains	*n NCCPI Soybeans	*n NCCPI Cotton
60055	Winfield silt loam, 2 to 5 percent slopes	35.88	37.2%		Ile	87	87	75	75	3
10151	Wakenda silt loam, 2 to 5 percent slopes	34.72	36.0%		Ile	88	88	75	78	0
60244	Winfield silt loam, 5 to 10 percent slopes, eroded	23.10	24.0%		IIle	82	82	69	67	0
60003	Menfro silt loam, 9 to 14 percent slopes, eroded	2.64	2.7%		IVe	79	79	65	64	0
Weighted Average						*n 85.9	*n 85.9	*n 73.3	*n 73.9	*n 1.1

*n: The aggregation method is "Weighted Average using all components"

*c: Using Capabilities Class Dominant Condition Aggregation Method

Soils data provided by USDA and NRCS.