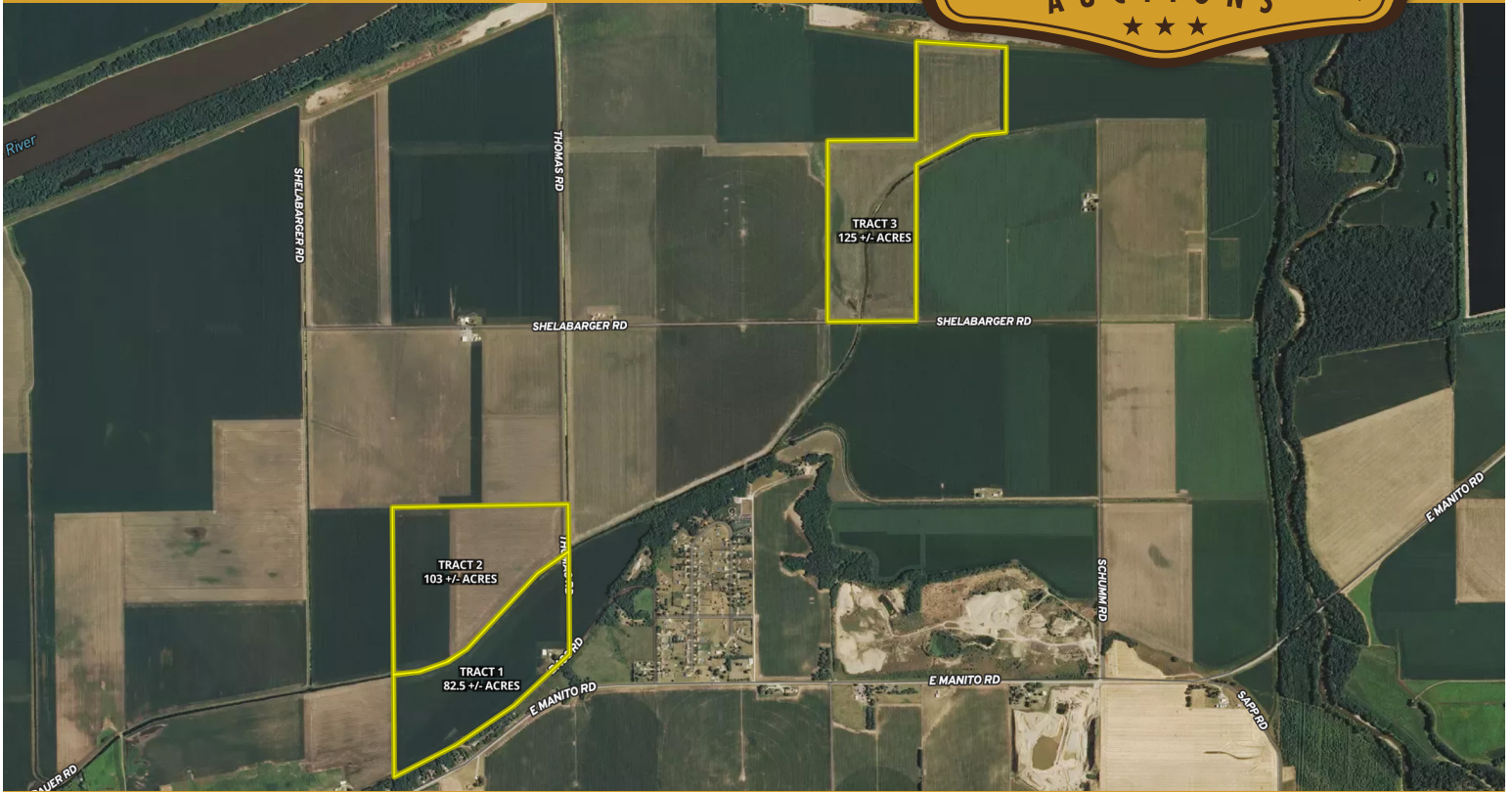


LAND AUCTION



310.31 AC± | 3 TRACTS | TAZEWELL CO, IL

AUCTION:

LIVE AND ONLINE AT RANCHANDFARMAUCTIONS.COM

AUCTION DATE: 11/24/20 | **AUCTION TIME:** 6:00 PM

AUCTION LOCATION: ONSITE
8162 BASS RD. MANITO, IL 61546

OPEN INSPECTION: CALL AGENT FOR A VIEWING

This mainly tillable offering is ideal for the investor looking to add highly productive tillable land to their portfolio or an exceptional addition to any farming operation. The property is located in the Spring Lake Drainage District off of Bass, Thomas, and Schelabarger Road in Tazewell County, IL. All tracts have been very well maintained and have levee protection. Storage bins and machine shed available not to mention this farm has a history of producing 250+ Bu. corn and 70+ Bu soybeans. All tracts are conveniently located within a short drive to Pacific Ethanol plant in Pekin, IL.

RANCH & FARM AUCTIONS, LLC

JASON ENDRES, AGENT: 309.224.9135 | Jason.Endres@whitetailproperties.com

RANCHANDFARMAUCTIONS.COM