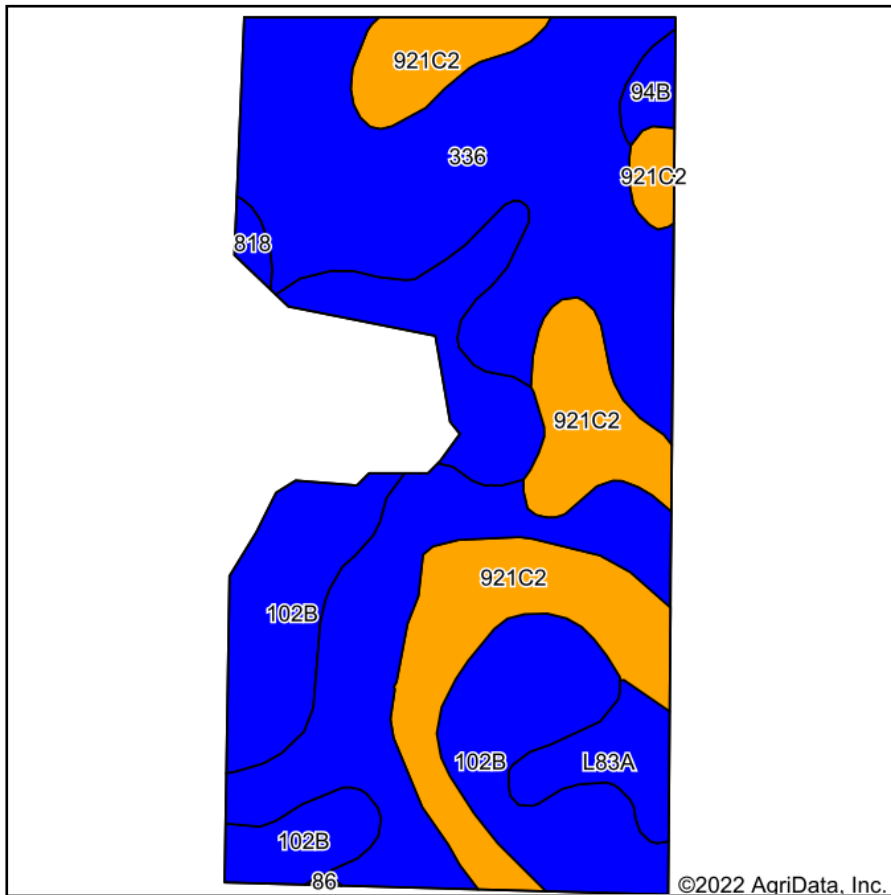
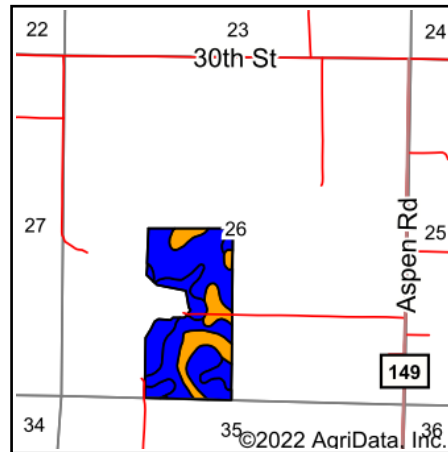


Soils Map



Soils data provided by USDA and NRCS.



State: **Minnesota**
 County: **Martin**
 Location: **26-101N-30W**
 Township: **Silver Lake**
 Acres: **71.32**
 Date: **10/11/2022**



WHITETAIL PROPERTIES REAL ESTATE
 HUNTING | RANCH | FARM | TIMBER

Maps Provided By:



Area Symbol: MN091, Soil Area Version: 18

Code	Soil Description	Acres	Percent of field	Non-Irr Class Legend	Soil Drainage	Non-Irr Class *c	Productivity Index	*n NCCPI Overall	*n NCCPI Corn	*n NCCPI Small Grains	*n NCCPI Soybeans	
336	Delft clay loam, 0 to 2 percent slopes	32.37	45.4%		Poorly drained	IIw	94	79	77	59	79	
102B	Clarion loam, 2 to 6 percent slopes	20.12	28.2%		Moderately well drained	Ile	95	84	80	63	84	
921C2	Clarion-Storden complex, 6 to 10 percent slopes, moderately eroded	14.95	21.0%		Well drained	IIle	87	73	70	53	72	
L83A	Webster clay loam, 0 to 2 percent slopes	2.60	3.6%		Poorly drained	IIw	93	83	78	60	82	
94B	Terril loam, 2 to 6 percent slopes	0.85	1.2%		Well drained	Ile	99	88	88	68	84	
818	Lemond-Linder complex	0.43	0.6%		Poorly drained	IIw	66	64	64	44	53	
Weighted Average							2.21	92.7	*n 79.3	*n 76.5	*n 58.9	*n 79

*n: The aggregation method is "Weighted Average using all components"

*c: Using Capabilities Class Dominant Condition Aggregation Method

Soils data provided by USDA and NRCS.